



**FREETHORPE CLOSE, LONDON, SE19**  
**£1,300 PER MONTH**

## **A BRIGHT AND SPACIOUS TWO DOUBLE BEDROOM TOP FLOOR FLAT**

**Crystal Palace** | 02038693222 | [crystalpalace@winkworth.co.uk](mailto:crystalpalace@winkworth.co.uk)

Tenant Fees Apply: Details of fees for tenant referencing, tenancy agreement admin fees and renewal fees are available on the Winkworth website and the link can be found with the displayed rent for the property. Tenants should ensure they are fully conversant with these upfront fees and other costs that are involved at the outset of the tenancy before making an offer to rent and your local Winkworth office will provide written details upon request.

[winkworth.co.uk](http://winkworth.co.uk)

**Winkworth**

**for every step...**



### **DESCRIPTION:**

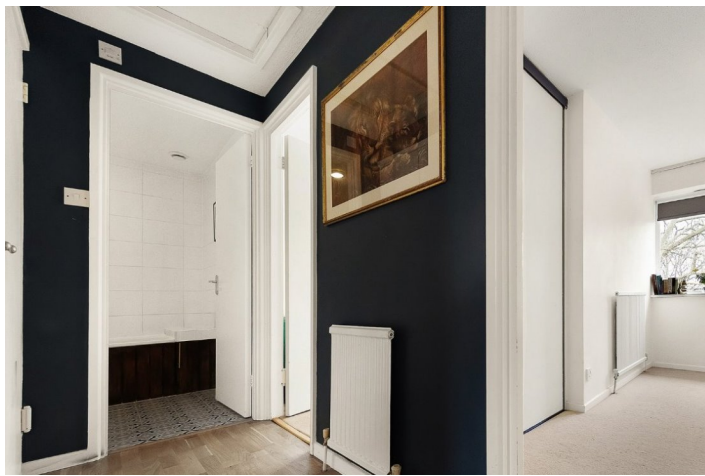
Situated at the end of a quiet cul-de-sac, Winkworth Crystal Palace are pleased to offer to the market this large, bright and spacious top floor two bedroom flat.

The accommodation comprises; kitchen, reception, bathroom and two bedrooms. The property further benefits from well maintained communal grounds.

Crystal Palace Triangle is only a short walk away with an excellent selection of bars, shops and restaurants as are the transport links of Crystal Palace and Gipsy Hill.

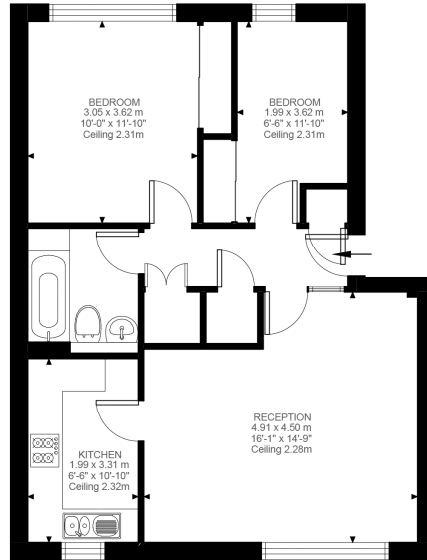
**Winkworth**

for every step...



**Winkworth**

for every step...

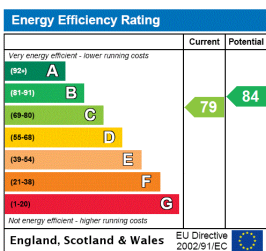


Second Floor  
648 ft<sup>2</sup>

Freethorpe Close, SE19  
 Approximate Gross Internal Area  
 60.19 SQ.M / 648 SQ.FT

Illustration for identification purposes only. Not to scale.  
 Floor Plan Drawn According To RICS Guidelines.

This floorplan is for illustration purposes only and is not to scale. The position and size of doors, windows, appliances and other features are approximate.



Crystal Palace | 02038693222 | crystalpalace@winkworth.co.uk

for every step...

winkworth.co.uk

Winkworth wishes to inform prospective buyers and tenants that these particulars are a guide and act as information only. All our details are given in good faith and believed to be correct at the time of printing but they don't form part of an offer or contract. No Winkworth employee has authority to make or give any representation or warranty in relation to this property. All fixtures and fittings, whether fitted or not are deemed removable by the vendor unless stated otherwise and room sizes are measured between internal wall surfaces, including furnishings.