



## BARONS COURT ROAD, W14 £500,000 SHARE OF FREEHOLD

A beautifully presented two bedroom, two bathroom flat with a private patio garden. The flat is located on a quiet street close to both West Kensington and Barons Court Underground stations.

Fulham & Parsons Green | 020 7731 3388 | [fulham@winkworth.co.uk](mailto:fulham@winkworth.co.uk)

**Winkworth**

for every step...

[winkworth.co.uk](http://winkworth.co.uk)





## DESCRIPTION

The flat benefits from its own front door and outdoor storage at the front of the property. There is a large reception room with a modern kitchen and a wonderful sitting room which is flooded with natural light. There is also a large storage room, which leads off the kitchen, perfect for cleaning equipment. The double bedroom benefits from ample built-in storage, and an ensuite bathroom. There is a second bedroom which would work well as a study, and provides access to the sunny private garden. There is also a second shower-room.

The property is located close to West Kensington and Barons Court tube stations, it also benefits from close proximity to Queens Club, LAMDA, Hammersmith and West London College. The property also has great connections to Hammersmith, Westfield shopping and Central London.



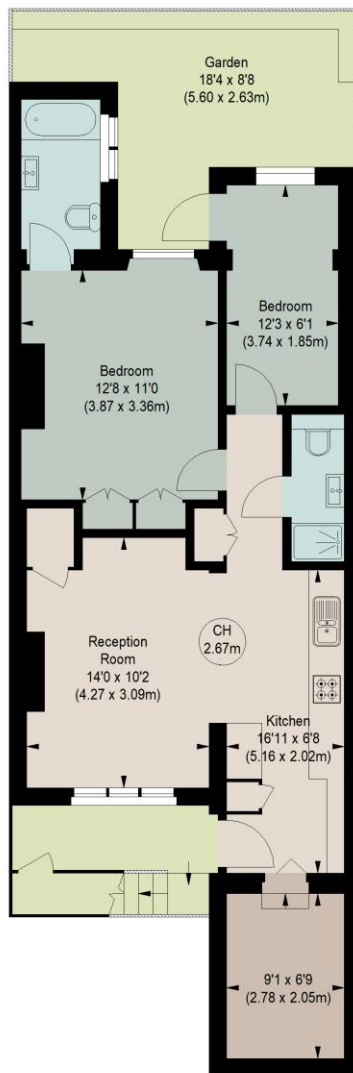




# BARONS COURT, W14

Approximate gross internal area  
686 sq ft / 63.73 sq m

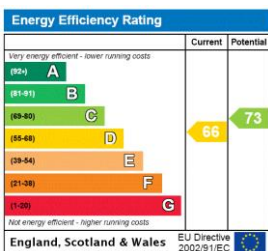
Key :  
CH - Ceiling Height



## LOWER GROUND FLOOR

The floor plan is not to scale and measurements and areas shown are approximate and therefore should be used for illustrative purposes only. The plan has been prepared in accordance with the RICS code of Measuring Practice and whilst we have confidence in the information produced, it must not be relied on. If there is any aspect of particular importance, you should carry out or commission your own inspection of the property.

This floorplan is for illustration purposes only and is not to scale. The position and size of doors, windows, appliances and other features are approximate.



**Tenure:** Share of Freehold

**Term:** n/a

**Service Charge:** speak to agent

**Ground Rent:** n/a

**Council Tax Band:** D

Where no figures are shown, we have been unable to ascertain the information. All figures that are shown were correct at the time of printing.

Fulham & Parsons Green | 020 7731 3388 | fulham@winkworth.co.uk

# Winkworth

for every step...

winkworth.co.uk

Winkworth wishes to inform prospective buyers and tenants that these particulars are a guide and act as information only. All our details are given in good faith and believed to be correct at the time of printing but they don't form part of an offer or contract. No Winkworth employee has authority to make or give any representation or warranty in relation to this property. All fixtures and fittings, whether fitted or not are deemed removable by the vendor unless stated otherwise and room sizes are measured between internal wall surfaces, including furnishings.