



GLOUCESTER MEWS WEST, HYDE PARK, W2
£1,725,000 FREEHOLD

LOCATED IN W2 - A SHORT STROLL FROM HYDE PARK AND PADDINGTON MAINLINE STATION. A WELL-PROPORTIONED, FREEHOLD MODERN MEWS HOUSE, WITH BI-FOLDING DOORS GIVING ACCESS TO THE COURTYARD GARDEN, FLEXIBLE ACCOMMODATION OFFERING THREE BEDROOMS, THREE BATHROOMS AND A FABULOUS MASTER SUITE, WITH DRESSING AREA / WALK-IN WARDROBE.

Paddington | 020 7467 5770 | paddington@winkworth.co.uk

Winkworth

for every step...

winkworth.co.uk



DESCRIPTION:

Gloucester Mews West is a quaint cobbled mews located north of Hyde Park, and about equidistant between Notting Hill to the West, and Marylebone to the East. It is ideally placed for St Mary's Hospital, which is about half a mile to the North East. The property is also well served for transport links including: Lancaster Gate (Central Line), National Rail (Paddington), Heathrow Express and the Elizabeth line.



Winkworth

for every step...



Winkworth

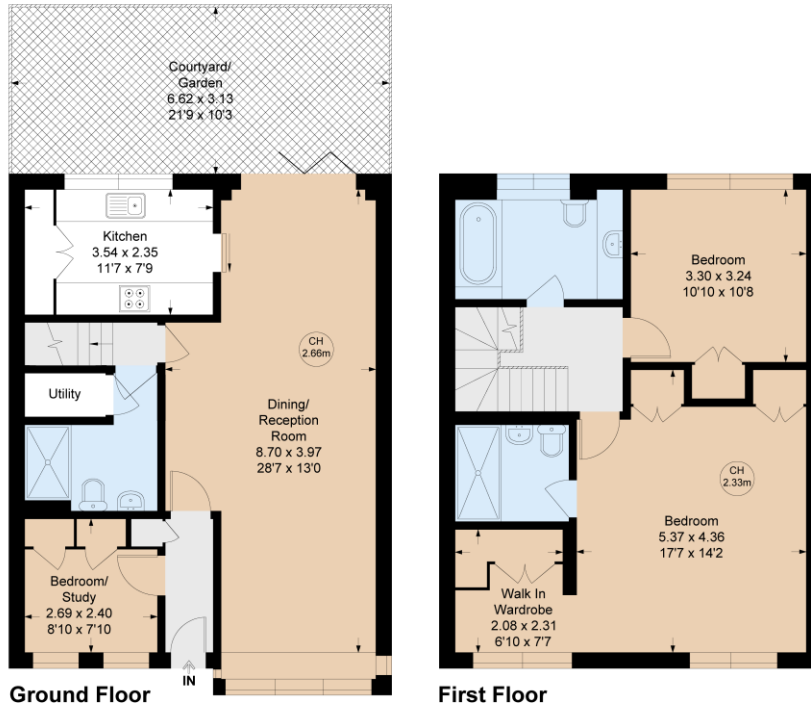
for every step...

Gloucester Mews West, W2

Approximate Gross Internal Area = 116.20 sq m / 1251 sq ft

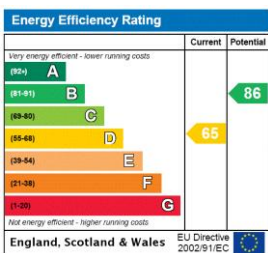


Key :
CH - Ceiling Height



Not to scale, for guidance only and must not be relied upon as a statement of fact.
All measurements and areas are approximate only

This floorplan is for illustration purposes only and is not to scale. The position and size of doors, windows, appliances and other features are approximate.



Tenure: Freehold
Term: 0 year and 0 months
Service Charge: NIL
Ground Rent: NIL
Council Tax Band: G

Where no figures are shown, we have been unable to ascertain the information. All figures that are shown were correct at the time of printing.

Paddington | 020 7467 5770 | paddington@winkworth.co.uk



for every step...

winkworth.co.uk

Winkworth wishes to inform prospective buyers and tenants that these particulars are a guide and act as information only. All our details are given in good faith and believed to be correct at the time of printing but they don't form part of an offer or contract. No Winkworth employee has authority to make or give any representation or warranty in relation to this property. All fixtures and fittings, whether fitted or not are deemed removable by the vendor unless stated otherwise and room sizes are measured between internal wall surfaces, including furnishings.