



HARDINGE ROAD, NW10
£5,000 PER MONTH UNFURNISHED

NEWLY RENOVATE FOUR BEDROOM FAMILY HOME OFFERED WITH OFF-STREET PARKING & A PRIVATE GARDEN

Kensal Rise & Queens Park | 0208 960 4947 |
kensalrise@winkworth.co.uk

Winkworth

for every step...

winkworth.co.uk



DESCRIPTION:

Newly Renovated.

Tenants can take advantage of being the first to occupy this newly renovated family home.

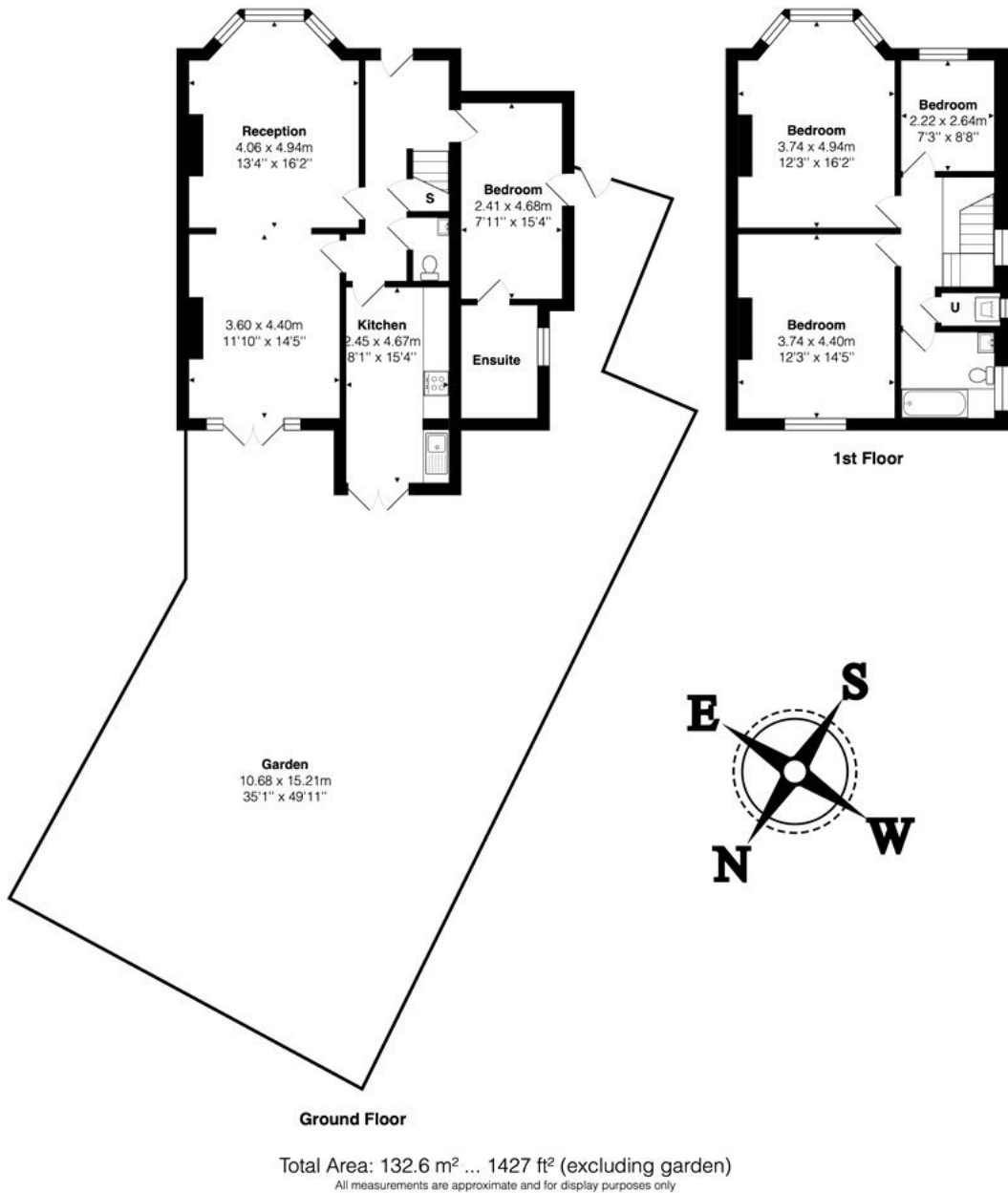
Split over two floors and comprises four bedrooms. One bedroom is located on the ground floor and benefits from an en-suite shower room and three on the first floor along with the family bathroom and utility cupboard.

The ground floor offers a spacious double aspect reception room with French doors leading to a 50ft private landscaped garden which also has access from back to front and offers additional space for a large storage shed if required.

The house further benefits from off street parking, fully equipped kitchen with additional French doors to the garden and the added benefit of a downstairs w/c.

Available and offered unfurnished.





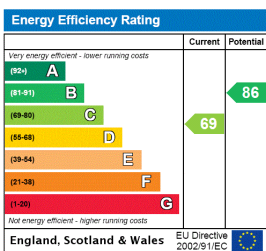
This floorplan is for illustration purposes only and is not to scale. The position and size of doors, windows, appliances and other features are approximate.

Deposit: £6,923.08

Holding Deposit: £1,153.85

Council Tax Band: E

where no figures are shown, we have been unable to ascertain the information. All figures that are shown were correct at the time of printing.



Kensal Rise & Queens Park | 0208 960 4947 | kensalrise@winkworth.co.uk

for every step...

winkworth.co.uk

Winkworth wishes to inform prospective buyers and tenants that these particulars are a guide and act as information only. All our details are given in good faith and believed to be correct at the time of printing but they don't form part of an offer or contract. No Winkworth employee has authority to make or give any representation or warranty in relation to this property. All fixtures and fittings, whether fitted or not are deemed removable by the vendor unless stated otherwise and room sizes are measured between internal wall surfaces, including furnishings.