



LYNTON ROAD, LONDON, W3
OIEO £1,650,000 FREEHOLD

EPC Band: D
Council Tax Band: G

Ealing & Acton | 0208 896 0123 | ealing@winkworth.co.uk

Winkworth

for every step...

winkworth.co.uk



DESCRIPTION:

This impressive Freehold property boasts well over 2,600 square feet of living space, perfect for families seeking comfort and versatility.

Inside, you'll find six generously sized bedrooms, offering ample space for relaxation and personalization. The two modern bathrooms provide convenience for busy mornings and family life. The ground floor features three well-defined reception rooms, ideal for entertaining and everyday living. Enjoy separate dining and sitting areas, along with a dedicated office space for remote work or study. The separate kitchen leads out to a large rear garden, perfect for outdoor gatherings and relaxation. At the rear of the garden, a spacious annex awaits, complete with plentiful storage options, making it perfect for a home office, gym, or creative space. Outside, the property offers ample parking for two large cars, complete with an EV charging point, in addition there are numerous solar panels on the roof of the property. The converted garage provides an excellent area for bicycles and includes a laundry room and cloakroom, enhancing the functionality of the home.

With its combination of space, convenience, and potential, this property on Lynton Road is a rare find. Don't miss the opportunity to make it yours!



Winkworth

for every step...

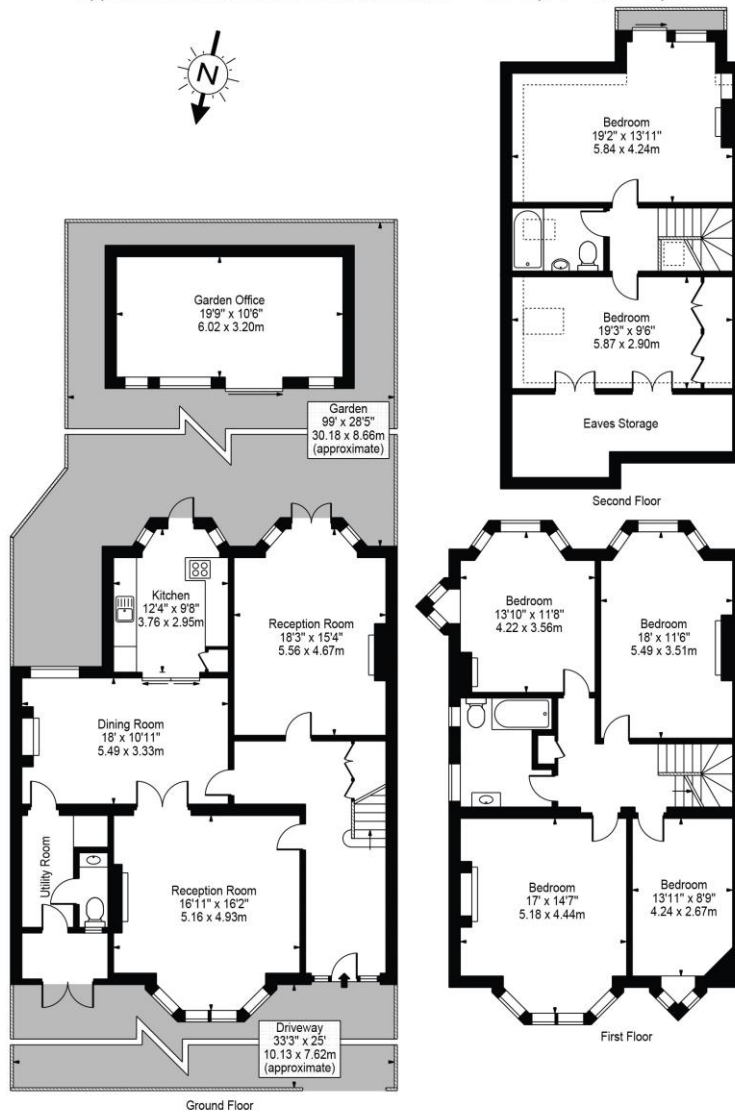


Winkworth

for every step...

Lynton Road, W3

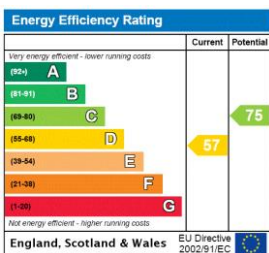
Approx. Total Internal Area 2927 Sq Ft - 271.92 Sq M
 (Including Eaves Storage, Restricted Height Area & Garden Office)
 Approx. Gross Internal Area 2553 Sq Ft - 237.18 Sq M
 (Excluding Eaves Storage, Restricted Height Area & Garden Office)
 Approx. Gross Internal Area Of Garden Office 207 Sq Ft - 19.26 Sq M



For Illustration Purposes Only - Not To Scale Floor Plan by Mira Nikolova Photography

This floor plan should be used as a general outline for guidance only and does not constitute in whole or in part an offer or contract. Any intending purchaser or lessee should satisfy themselves by inspection, searches, enquiries and full survey as to the correctness of each statement. Any areas, measurements or distances quoted are approximate and should not be used to value a property or be the basis of any sale or let.

This floorplan is for illustration purposes only and is not to scale. The position and size of doors, windows, appliances and other features are approximate.



Tenure: Freehold

Term: N/A

Service Charge: N/A

Ground Rent: N/A

Council Tax Band: G

Where no figures are shown, we have been unable to ascertain the information. All figures that are shown were correct at the time of printing.

Ealing & Acton | 0208 896 0123 | ealing@winkworth.co.uk

Winkworth

for every step...

winkworth.co.uk

Winkworth wishes to inform prospective buyers and tenants that these particulars are a guide and act as information only. All our details are given in good faith and believed to be correct at the time of printing but they don't form part of an offer or contract. No Winkworth employee has authority to make or give any representation or warranty in relation to this property. All fixtures and fittings, whether fitted or not are deemed removable by the vendor unless stated otherwise and room sizes are measured between internal wall surfaces, including furnishings.