



24 North End Parade

London, W14 0SJ

Retail unit on busy West London Parade.

789 sq ft

(73.30 sq m)

- Highly visible street frontage.
- Set on prominent west-London retail parade.
- High levels of passing trade.
- Excellent proportions through out with W/C amenity.
- Suitable for a variety of uses.

24 North End Parade, London, W14 0SJ

Summary

Available Size	789 sq ft
Rent	£22,500 per annum
Business Rates	Upon Enquiry
EPC Rating	Upon enquiry

Description

The property is located on North End Parade set within a large mixed-use block. The property measures approximately 700sqft and is arranged over the ground and basement levels, the property also benefits from w/c and shower amenities although requires refurbishment to fit the needs of any future occupation.

The tenancy mix of the parade includes local and national operators and remains a central hub for residents and those passing through. The property is close to the £1.3bn Kensington Olympia Development acting as a magnet for further investment.

Location

North End Road is a major arterial road linking Fulham Broadway to Kensington High Street. The property provides excellent access into either London or Heathrow airport via the A4, and is well-connected to London's public transport network by virtue of its proximity to West Kensington.

Terms

Rent: £22,500 per annum.

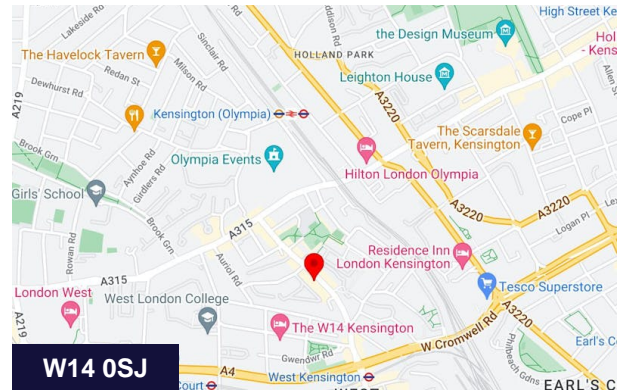
Rateable Value: £12,750 per annum.

Lease Terms: Negotiable.

EPC: C (60).

Possession: Full Vacant possession on completion of legal formalities.

Legal Costs: Each party is to pay their own legal costs.



Viewing & Further Information



Adam Stackhouse

07889 510036 | 020 7355 0285
astackhouse@winkworth.co.uk



Chris Ryan

07385 413368 | 020 7355 0285
cryan@winkworth.co.uk

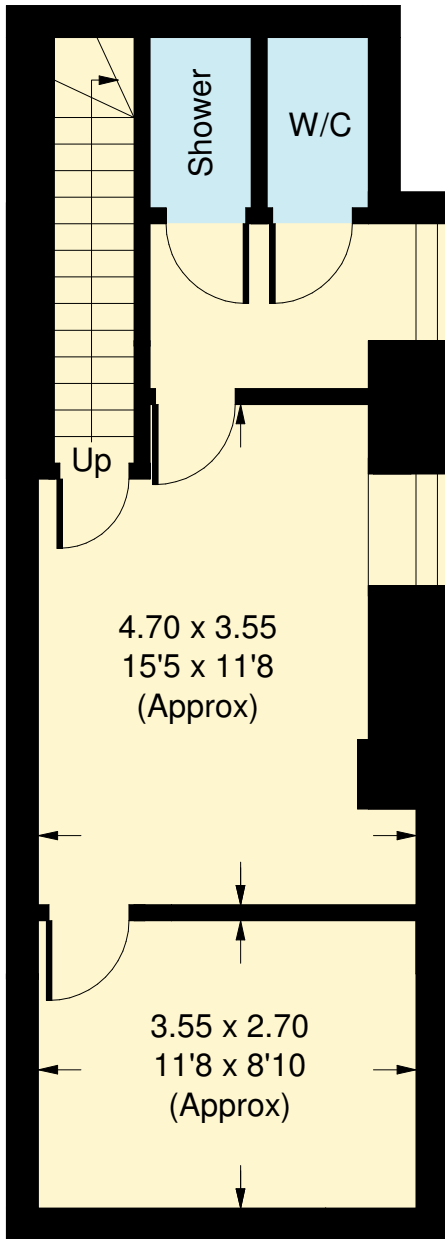
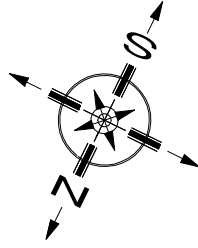
The above information contained within this email is sent subject to contract. These particulars are for general information only and do not constitute any part of an offer or contract. All statements contained therein are made without responsibility on the part of the vendors or lessors and are not to be relied upon as statement or representation of fact. Intending purchasers or lessees must satisfy themselves, by inspection, or otherwise, as to the correctness of each of the statements of dimensions contained in these particulars. Generated on 06/01/2025

North End Parade, W14

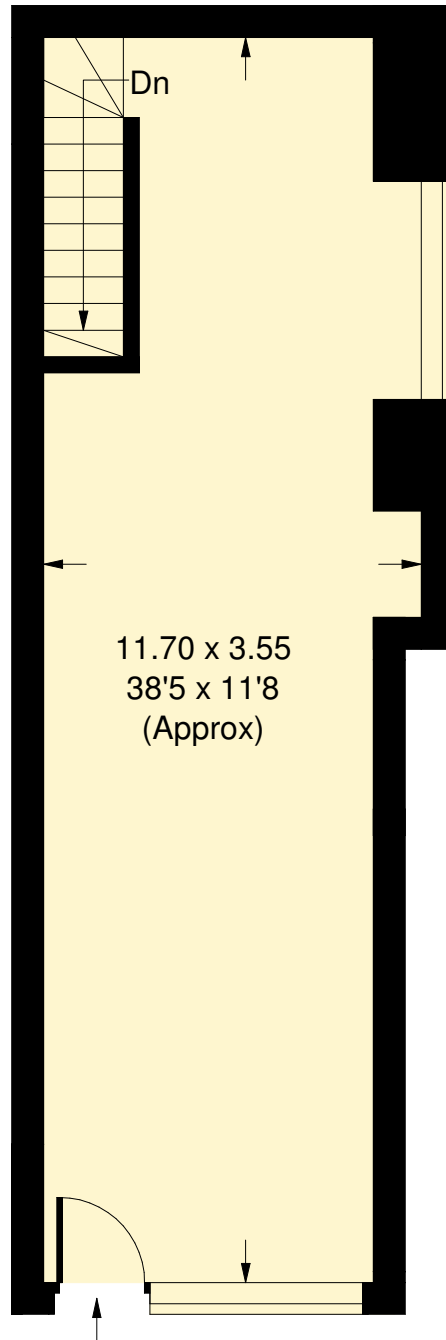
Approx. Gross Internal Area = 37.6 sq m / 405 sq ft

Basement = 35.7 sq m / 384 sq ft

Total = 73.3 sq m / 789 sq ft



Basement



Ground Floor

Whilst every attempt has been made to ensure the accuracy of the floor plan, measurements are approximate and not to scale.
No guarantee is given on the total square footage of the property quoted on the plan. Figures given are for guidance.
Plan is for illustration purposes only, not to be used for valuations.