



CONISTON GARDENS, KINGSBURY, LONDON, NW9
£815,000 FREEHOLD

FIVE BEDROOM FAMILY HOME SPRINGFIELD MOUNT ESTATE

Kingsbury | 020 8204 0000 | kingsbury@winkworth.co.uk

Winkworth

for every step...

winkworth.co.uk



A fabulous semi-detached house positioned in the serene and popular Springfield Mount; A wonderful residence nestled midway between the bustle of Kingsbury and Colindale, this property offers a convenient lifestyle with a selection of transport links, shops, schools such as Oliver Goldsmith and Kingsbury High a close distance away. Arranged over two levels, and with a crisp clean interior throughout, this residence greets you with a spacious through lounge, a practical kitchen and utility room, well-appointed W/C and a study/ bedroom on the ground floor. The upper-level hosts four generously sized bedrooms with integrated storage, and a family bathroom. Externally, the gorgeous rear garden has been lovingly maintained offering the perfect tranquil outdoor setting. Residents will take advantage of the perk of off-street parking for two cars, as well as the scope for further extension into the loft (STPP). An internal viewing is strongly recommended to fully appreciate all that this wonderful home has to offer.



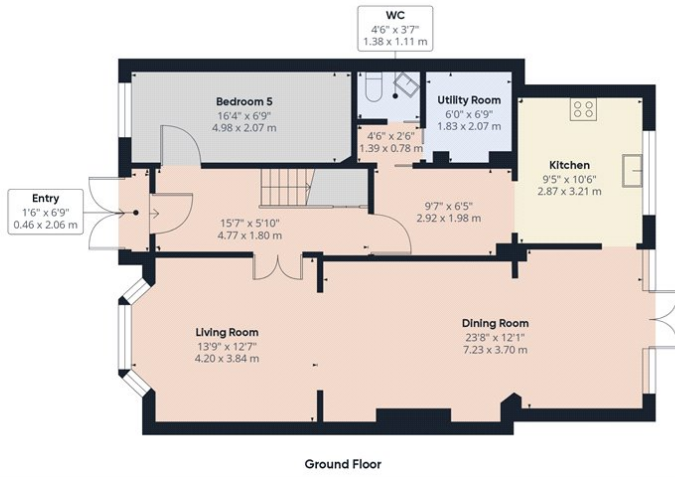
Winkworth

for every step...

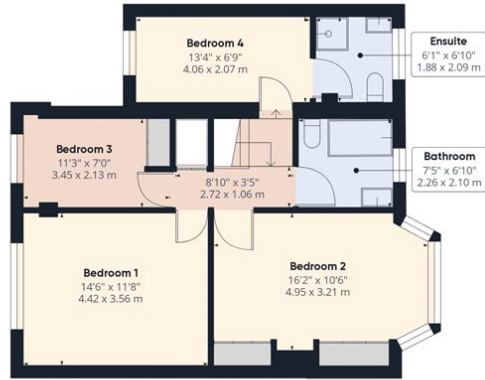


Winkworth

for every step...



Ground Floor



Floor 1

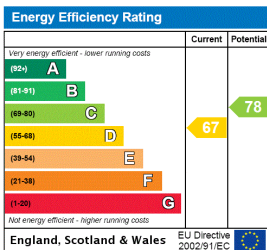
Approximate total area¹⁾
1567.44 ft²
145.62 m²

(1) Excluding balconies and terraces

While every attempt has been made to ensure accuracy, all measurements are approximate, not to scale. This floor plan is for illustrative purposes only.

GIRAFFE360

This floorplan is for illustration purposes only and is not to scale. The position and size of doors, windows, appliances and other features are approximate.



Tenure: Freehold

Council Tax Band: E

Where no figures are shown, we have been unable to ascertain the information. All figures that are shown were correct at the time of printing.

Kingsbury | 020 8204 0000 | kingsbury@winkworth.co.uk



for every step...

winkworth.co.uk

Winkworth wishes to inform prospective buyers and tenants that these particulars are a guide and act as information only. All our details are given in good faith and believed to be correct at the time of printing but they don't form part of an offer or contract. No Winkworth employee has authority to make or give any representation or warranty in relation to this property. All fixtures and fittings, whether fitted or not are deemed removable by the vendor unless stated otherwise and room sizes are measured between internal wall surfaces, including furnishings.