



MARKET PLACE, OXFORDSHIRE, RG9 2AH
£1,200 PER MONTH FURNISHED

A ONE BEDROOM FIRST FLOOR FURNISHED APARTMENT IN THE CENTRE OF HENLEY-ON-THAMES

Reading | 0118 4022 300 | reading@winkworth.co.uk

Winkworth

for every step...

winkworth.co.uk

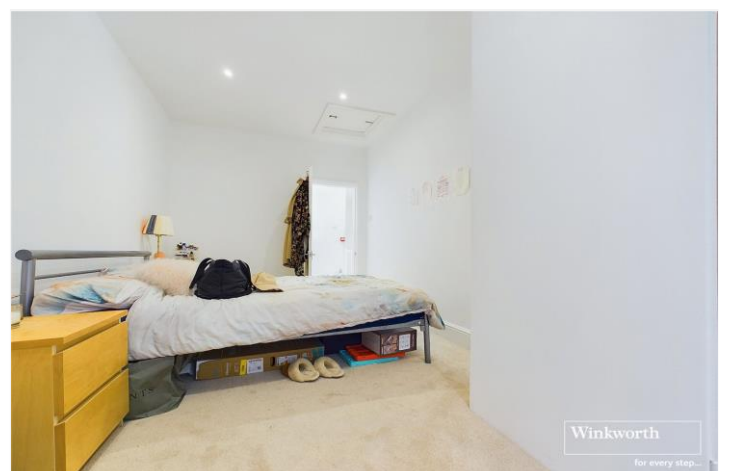


DESCRIPTION:

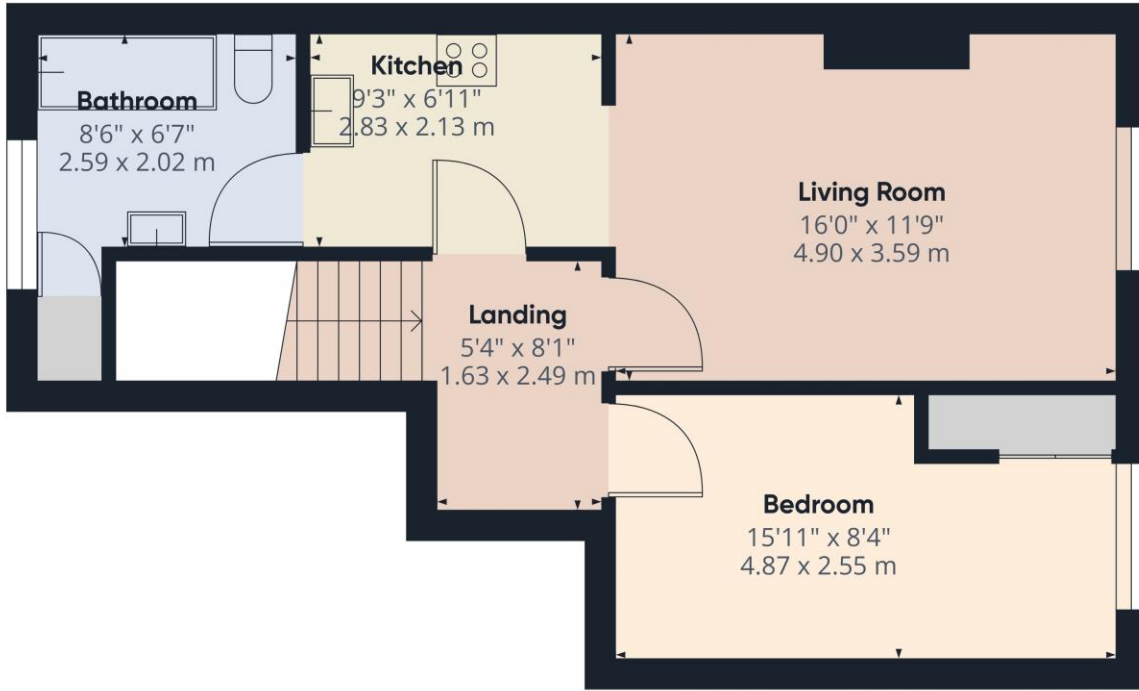
A one bedroom first floor apartment set in the heart of Henley-on-Thames a short walk to the River Thames and Henley Train Station with an abundance of boutique shops, cafe's, restaurants and bars in it doorstep. The property is set above an office with access via a private entrance. Living accommodation comprises a bright well-proportioned living room with a fitted kitchen off one end, a double bedroom with built in wardrobe and a contemporary three piece bathroom. No parking. Available 20th July 2024. Furnished.

AT A GLANCE

- One Bedroom First Floor Maisonette
- Convenient Town Centre Location
- Spacious Living Room
- Fitted Kitchen
- Council tax band C
- Contemporary Bathroom
- Available 20th July
- No Parking







Approximate total area⁽¹⁾
503.14 ft²
46.74 m²

(1) Excluding balconies and terraces

While every attempt has been made to ensure accuracy, all measurements are approximate, not to scale. This floor plan is for illustrative purposes only.

GIRAFFE360

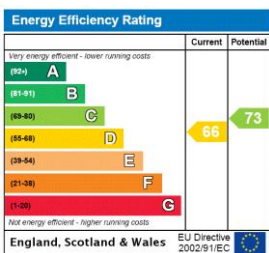
This floorplan is for illustration purposes only and is not to scale. The position and size of doors, windows, appliances and other features are approximate.

Deposit: £1,384.62

Holding Deposit: £276.92

Council Tax Band: C

Where no figures are shown, we have been unable to ascertain the information. All figures that are shown were correct at the time of printing.



Reading | 0118 4022 300 | reading@winkworth.co.uk



for every step...

winkworth.co.uk

Winkworth wishes to inform prospective buyers and tenants that these particulars are a guide and act as information only. All our details are given in good faith and believed to be correct at the time of printing but they don't form part of an offer or contract. No Winkworth employee has authority to make or give any representation or warranty in relation to this property. All fixtures and fittings, whether fitted or not are deemed removable by the vendor unless stated otherwise and room sizes are measured between internal wall surfaces, including furnishings.