



## Cornwall Gardens, South Kensington, London, SW7

£825 per week\* / £3,575 per month – Furnished

A stunning one bedroom, raised ground floor flat with direct access to communal gardens.

1 Bedroom | 1 Reception Room | 2 Bathrooms | Raised Ground Floor Flat | Communal Gardens |  
746 Approx sq ft | EPC: C

APPLICANT FEES MAY BE APPLICABLE  
DEPOSIT OF 5 WEEKS' RENT  
HOLDING DEPOSIT OF 1 WEEK'S RENT

**Winkworth**

[winkworth.co.uk](http://winkworth.co.uk)

for every step...





## DESCRIPTION

This beautiful, bright flat offers 746 square feet of accommodation including a contemporary kitchen, spacious bedroom with built in storage, modern en-suite bathroom and a further shower room. The large hallway leads through to the spacious living room that boasts exceptionally high ceilings, wooden floors, large windows and french doors leading out onto the pretty communal gardens.

The flat is available from December on a furnished basis.



## ACCOMMODATION

1 Bedroom, 1 Reception Room,  
2 Bathrooms, Raised Ground Floor,  
Communal Gardens, Furnished,  
746 Approx Sq ft

## COUNCIL TAX BAND

Band G



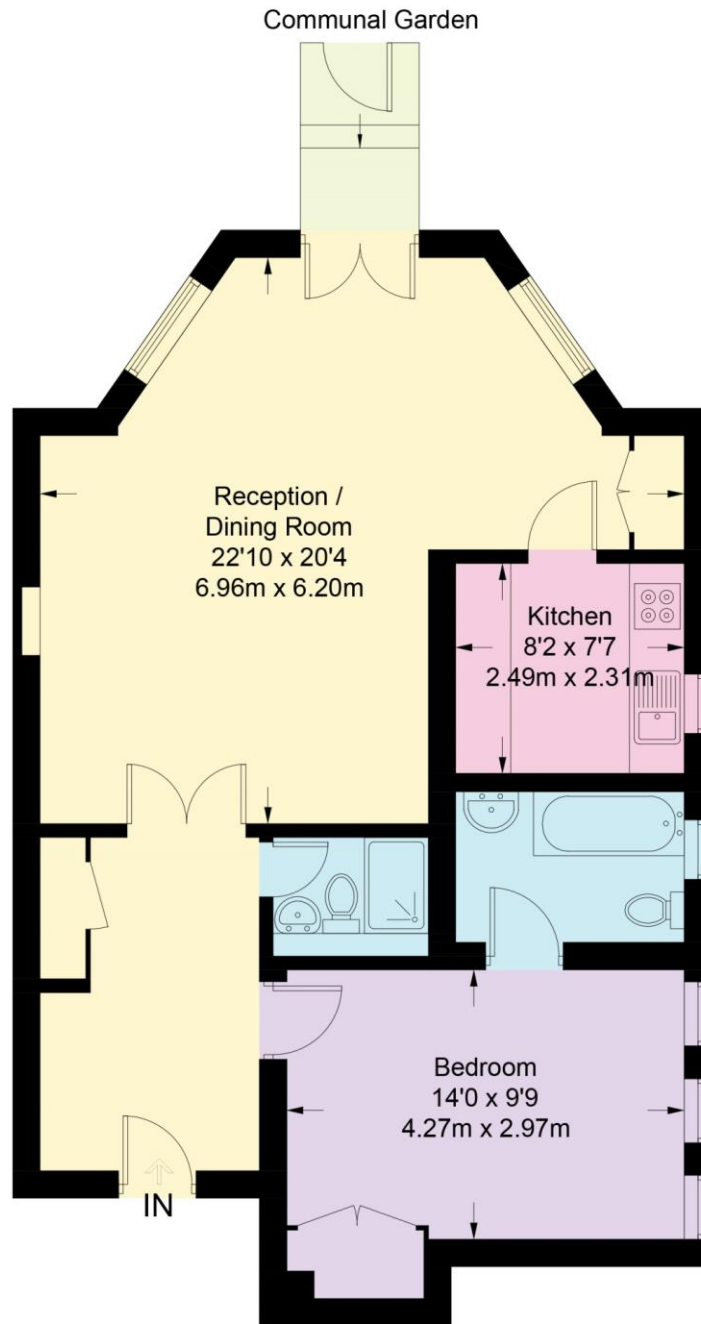
Energy Efficiency Rating		Current	Potential
Very energy efficient - lower running costs			
(92+)	<b>A</b>		
(81-91)	<b>B</b>		
(69-80)	<b>C</b>		
(55-68)	<b>D</b>		
(39-54)	<b>E</b>		
(21-38)	<b>F</b>		
(1-20)	<b>G</b>		
Not energy efficient - higher running costs			
		70	81
England, Scotland & Wales		EU Directive 2002/91/EC	





# Cornwall Gardens

Approximate Gross Internal Area = 746 sq ft / 69.3 sq m



## Raised Ground Floor

Not to scale, for guidance only and must not be relied upon as a statement of fact.  
All measurements and areas are approximate only and have been prepared in accordance with the current edition of the RICS Code of Measuring Practice.

*This floorplan is for illustration purposes only and is not to scale. The position and size of doors, windows, appliances and other features are approximate.*

*Please note, Rent cannot be paid on a weekly basis*



South Kensington Lettings | 020 7370 6767 | [lettings.southken@winkworth.co.uk](mailto:lettings.southken@winkworth.co.uk)

[winkworth.co.uk](http://winkworth.co.uk)

for every step...

Winkworth wishes to inform prospective buyers and tenants that these particulars are a guide and act as information only. All our details are given in good faith and believed to be correct at the time of printing but they don't form part of an offer or contract. No Winkworth employee has authority to make or give any representation or warranty in relation to this property. All fixtures and fittings, whether fitted or not are deemed removable by the vendor unless stated otherwise and room sizes are measured between internal wall surfaces, including furnishings.