



KINGFISHER PLACE, BERKSHIRE, RG1 8BQ
£1,395 PER MONTH FURNISHED

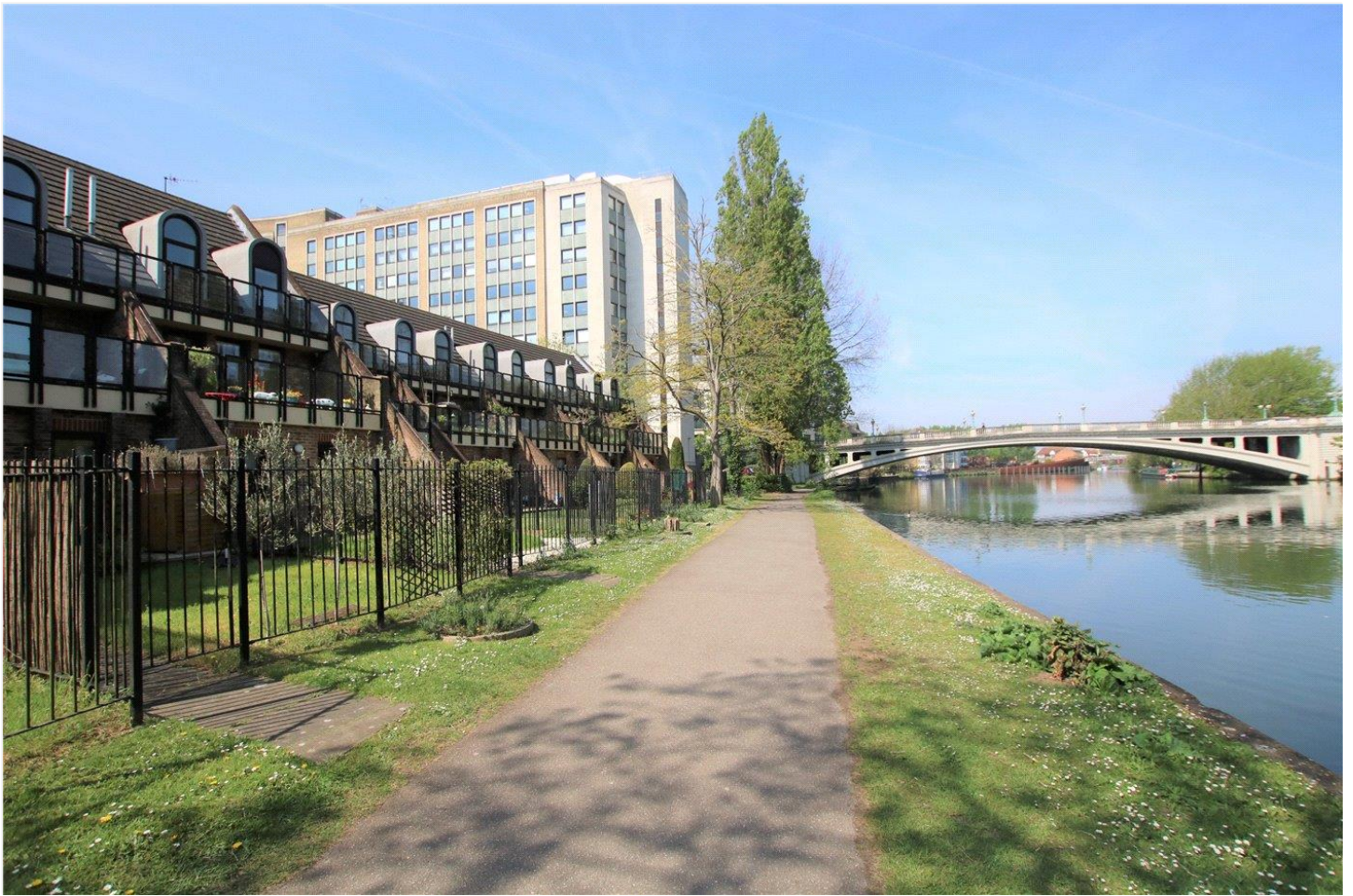
A ONE BEDROOM FURNISHED RIVERSIDE GARDEN FLAT A SHORT WALK TO READING STATION

Reading | 0118 4022 300 | reading@winkworth.co.uk

Winkworth

for every step...

winkworth.co.uk



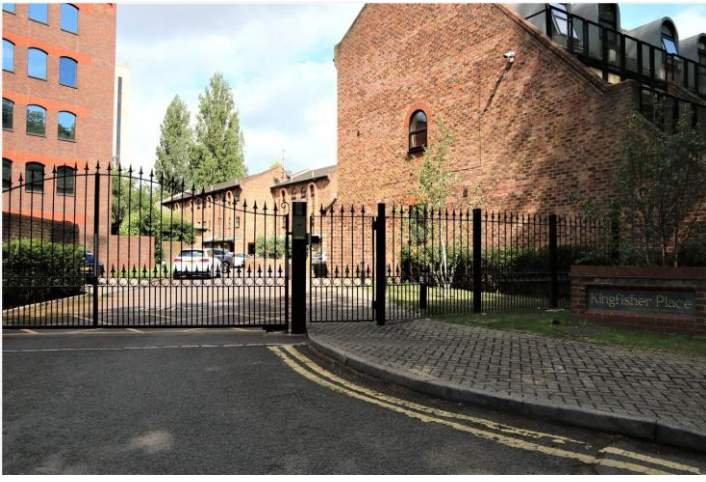
DESCRIPTION:

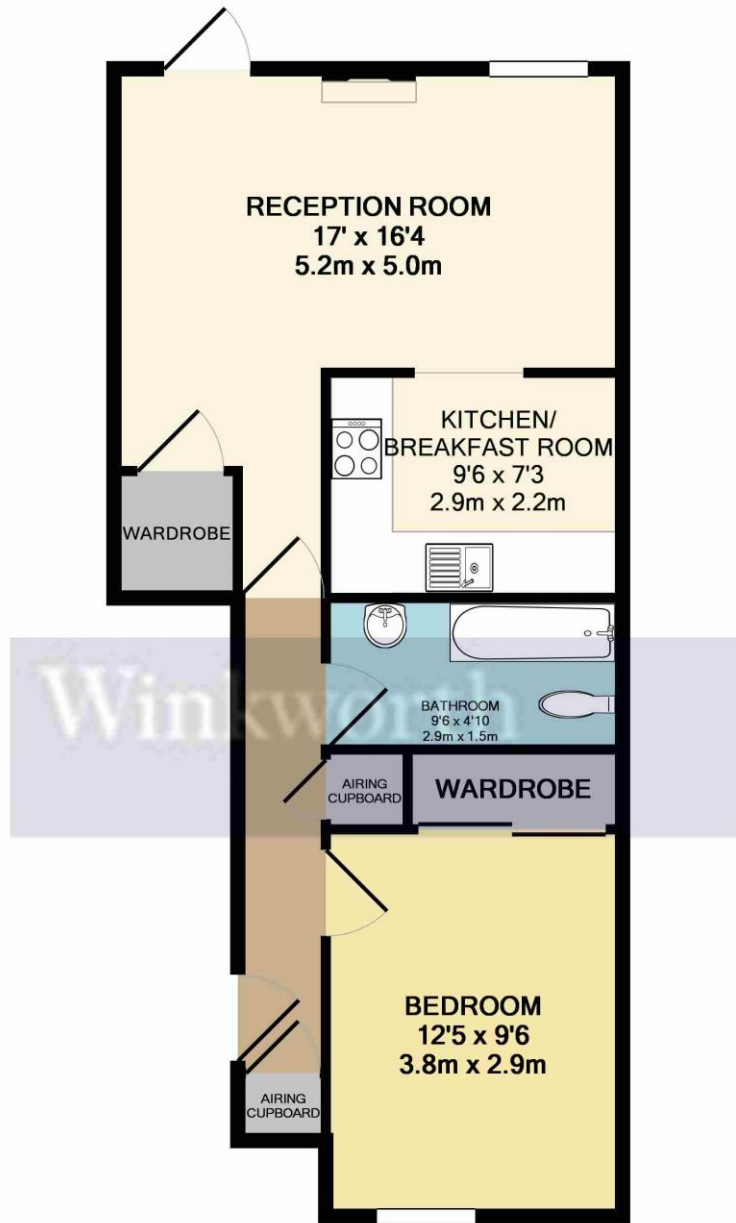
A delightful one bedroom garden flat overlooking the River Thames in a secure gated development. Conveniently located a short walk to Reading Station, the Town Centre and Caversham this well presented apartment comprises; a double bedroom, lounge/diner, a modern fitted kitchen/breakfast room and modern bathroom. The property further benefits from a private riverside garden which is accessed from the lounge/diner and allocated parking via electronic gates. Available 19th October 2024. Furnished.

AT A GLANCE

- One Bedroom Garden Flat Overlooking The River Thames
- Private Garden
- Modern Fitted Kitchen
- Council tax band C
- Secure Gated Off Road Parking
- Available 19th October
- Furnished







TOTAL APPROX. FLOOR AREA 514 SQ.FT. (47.8 SQ.M.)

Whilst every attempt has been made to ensure the accuracy of the floor plan contained here, measurements of doors, windows, rooms and any other items are approximate and no responsibility is taken for any error, omission, or mis-statement. This plan is for illustrative purposes only and should be used as such by any prospective purchaser. The services, systems and appliances shown have not been tested and no guarantee as to their operability or efficiency can be given
 Made with Metropix ©2019

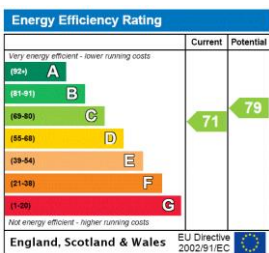
This floorplan is for illustration purposes only and is not to scale. The position and size of doors, windows, appliances and other features are approximate.

Deposit: £1,609.62

Holding Deposit: £321.92

Council Tax Band: C

Where no figures are shown, we have been unable to ascertain the information. All figures that are shown were correct at the time of printing.



Reading | 0118 4022 300 | reading@winkworth.co.uk



for every step...

winkworth.co.uk

Winkworth wishes to inform prospective buyers and tenants that these particulars are a guide and act as information only. All our details are given in good faith and believed to be correct at the time of printing but they don't form part of an offer or contract. No Winkworth employee has authority to make or give any representation or warranty in relation to this property. All fixtures and fittings, whether fitted or not are deemed removable by the vendor unless stated otherwise and room sizes are measured between internal wall surfaces, including furnishings.