



CORSICA STREET, LONDON, N5
£700,000 LEASEHOLD

A WONDERFUL, TWO DOUBLE BEDROOM,
FIRST FLOOR APARTMENT MOMENTS FROM
UPPER STREET AND THE TUBE.

Islington | 0207 354 2480 | islington@winkworth.co.uk

Winkworth

winkworth.co.uk

See things differently



DESCRIPTION:

A stunning, two double bedroom apartment positioned on the first floor of this 2012 development, complete with lift access, bike storage and communal gardens. Accommodation comprises of a wonderfully bright, open plan living room/kitchen area with direct access to a sizeable, south-west facing balcony. Both bedrooms are good sized doubles, the master benefitting from built in storage and large floor to ceiling windows. A modern family sized bathroom and ample storage in the hallway completes the property.

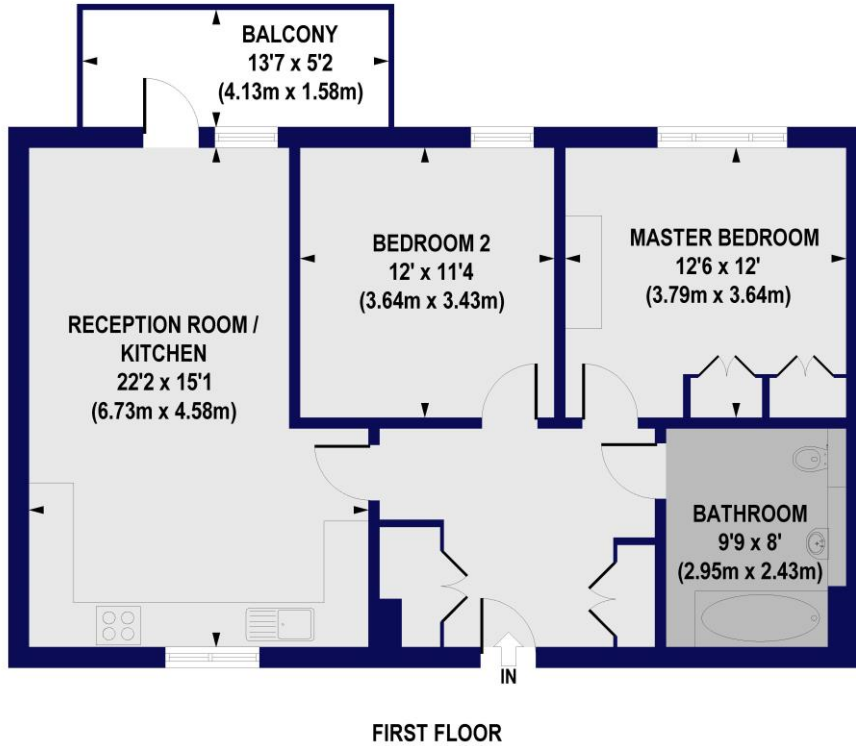
Corsica Street is set moments from the entrance to the green space of Highbury Fields with its variety of sporting activities and play spaces. Situated a short walk away is the prestigious Highbury Barn which offers a number of renowned local amenities, including Godfrey's Butchers, Bourne's Fishmongers, La Fromagerie, and Highbury Vintners. Upper Street with all its boutique shops, restaurants and bars are on your doorstep too. Transport links are a short distance away and well serviced by a selection of convenient bus routes, Highbury & Islington Station (Victoria Line, Overground and Great Northern taking you straight into Moorgate), Arsenal Underground Station (Piccadilly Line), as well as within close proximity.

Winkworth



Winkworth

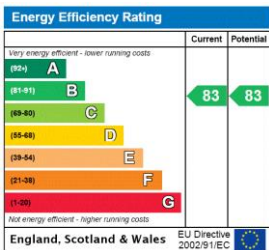
Corsica Street, N5
Approx. Gross Internal Floor Area 803 sq. ft / 74.56 sq. m



All measurements of walls, doors, windows, fittings and appliances, including their size and location, are shown as standard sizes and do not constitute any warranty or representation by the seller, their agent or CP Creative. Any intending purchaser must satisfy himself by inspection or otherwise as to the correctness of the information contained in these plans. This plan is for illustrative purposes only and should be used as such by any prospective purchasers.

Winkworth

This floorplan is for illustration purposes only and is not to scale. The position and size of doors, windows, appliances and other features are approximate.



Islington | 0207 354 2480 | islington@winkworth.co.uk



winkworth.co.uk

See things differently

Winkworth wishes to inform prospective buyers and tenants that these particulars are a guide and act as information only. All our details are given in good faith and believed to be correct at the time of printing but they don't form part of an offer or contract. No Winkworth employee has authority to make or give any representation or warranty in relation to this property. All fixtures and fittings, whether fitted or not are deemed removable by the vendor unless stated otherwise and room sizes are measured between internal wall surfaces, including furnishings.