



WOODSEER STREET, LONDON, E1
£750 PER WEEK FURNISHED

A STYLISH AND EXPANSIVE WAREHOUSE CONVERSION APARTMENT WITH PRIVATE PATIO GARDEN AND CLOSE TO EXCELLENT

Shoreditch | 020 7749 7650 | shoreditch@winkworth.co.uk

Winkworth

Tenant Fees Apply: Details of fees for tenant referencing, tenancy agreement admin fees and renewal fees are available on the Winkworth website and the link can be found with the displayed rent for the property. Tenants should ensure they are fully conversant with these upfront fees and other costs that are involved at the outset of the tenancy before making an offer to rent and your local Winkworth office will provide written details upon request.

winkworth.co.uk

See things differently



DESCRIPTION:

A stunning warehouse conversion apartment spread across 1200sq ft of lateral space and located less than 50m from Brick Lane. This contemporary apartment benefits from a large private patio garden and has two spacious double bedrooms (one with ensuite shower room), modern bathroom suite, huge reception room with spacious dining area and also a modern open-plan kitchen with fitted appliances.

The property is offered part-furnished with main furniture pieces included and is decorated to a high standard throughout. It is conveniently located less than 5 minutes' walk from Aldgate East and Whitechapel tube stations as well as Shoreditch High Street Overground.

EPC Rating: C

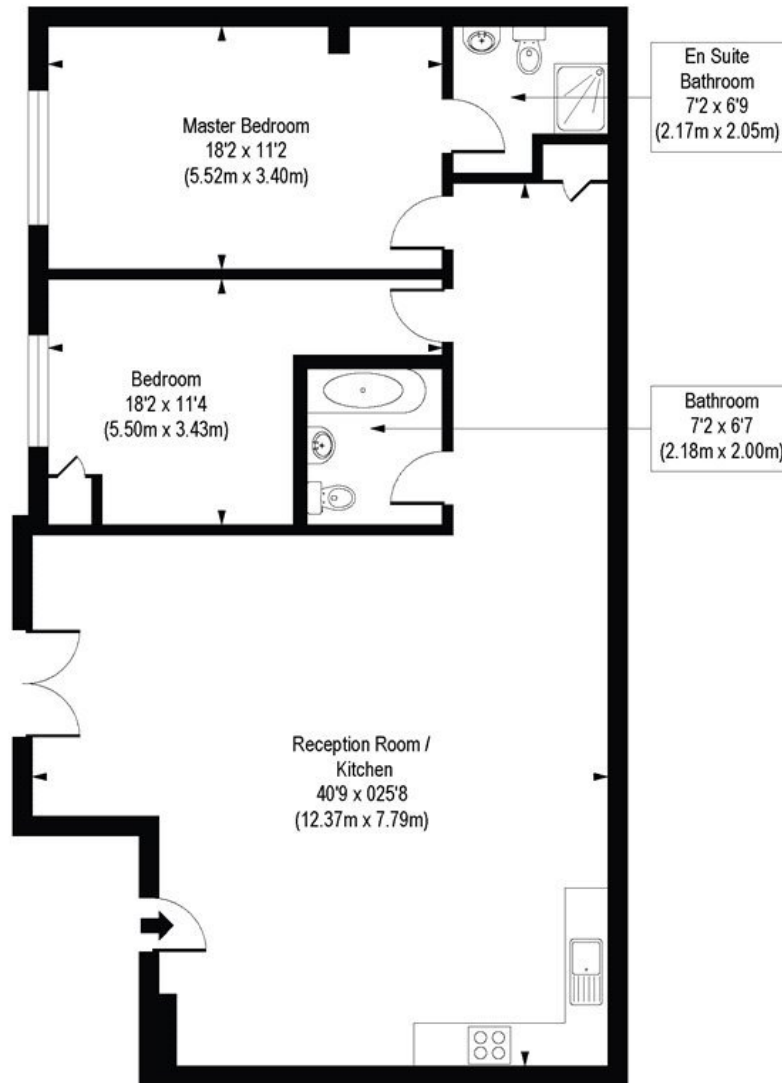
Winkworth



Winkworth

Woodseer Street, E1

Approx. Gross Internal Floor Area 1181 sq. ft / 109.68 sq. m



Ground Floor

COMPLIANT WITH RICS CODE OF MEASURING PRACTICE. Floorplan is for illustrative purposes only and is not to scale. Every attempt has been made to ensure the accuracy of the floorplan shown, however all measurements, fixtures, fittings and data shown are an approximate interpretation for illustrative purposes only. Liability for errors, omissions or mis-statement through negligence or otherwise is hereby excluded.

This floorplan is for illustration purposes only and is not to scale. The position and size of doors, windows, appliances and other features are approximate.

Shoreditch | 020 7749 7650 | shoreditch@winkworth.co.uk

Winkworth

winkworth.co.uk

See things differently

Winkworth wishes to inform prospective buyers and tenants that these particulars are a guide and act as information only. All our details are given in good faith and believed to be correct at the time of printing but they don't form part of an offer or contract. No Winkworth employee has authority to make or give any representation or warranty in relation to this property. All fixtures and fittings, whether fitted or not are deemed removable by the vendor unless stated otherwise and room sizes are measured between internal wall surfaces, including furnishings.