



## DELAFORD STREET, FULHAM, LONDON, SW6 £1,595,000 FREEHOLD

An exceptional five bedroom Victorian family house in this quiet residential street in the heart of Fulham.

Fulham & Parsons Green | 020 7731 3388 | [fulham@winkworth.co.uk](mailto:fulham@winkworth.co.uk)

**Winkworth**

for every step...



## DESCRIPTION

The property spans just shy of 2020 Sq. Ft. and offers fantastic living and entertaining space. There is a wonderfully designed open plan kitchen and reception room spanning the entirety of the ground floor, with bifolding doors opening out onto the south east facing garden. There is also a useful downstairs cloakroom and utility room on this floor. There are two bedrooms and a bathroom on both the first and second floor. The fifth bedroom can be found on the top floor and benefits from an ensuite bathroom. All bedrooms have extensive built in storage and are served by their own bathroom.

Delaforde Street is located just off the Lillie Road in Fulham, within walking distance of a number of stations, including West Brompton (District line and overground), Barons Court (Piccadilly line), Fulham Broadway and Parsons Green (both District line). There are good bus links on Lillie Road and Daws Road. It is also within immediate access of the local amenities on the North End Road, as well

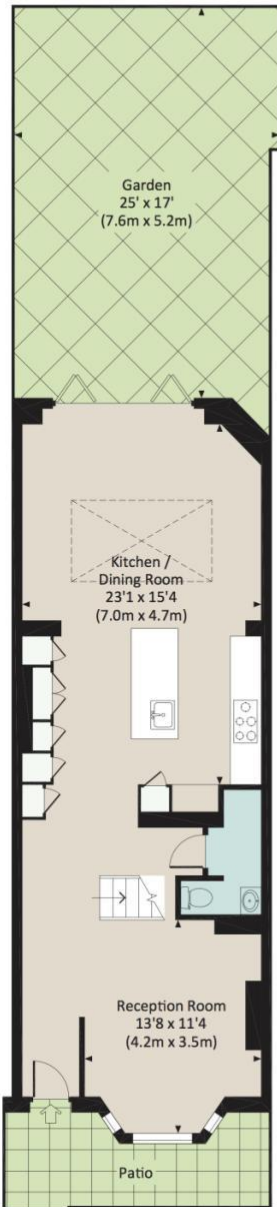




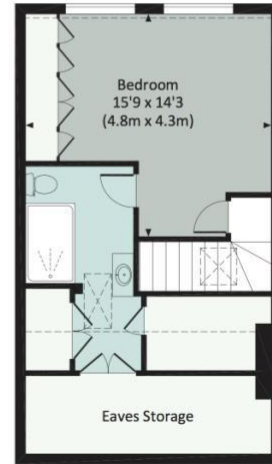
# DELAFORD STREET, SW6

Approx. gross internal area 1900 Sq Ft. / 176.5 Sq M.

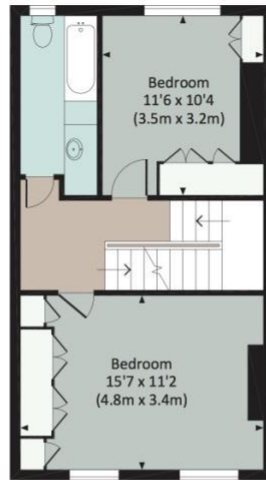
Approx. gross internal area 2019 Sq Ft. / 187.6 Sq M. Inc. Restricted Height



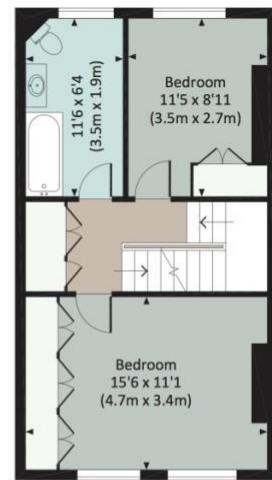
GROUND FLOOR



THIRD FLOOR



FIRST FLOOR



SECOND FLOOR

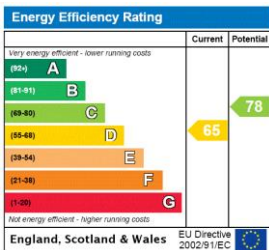


All measurements have been made in accordance with RICS Code of Measuring Practice which are approximate only and only for illustrative purposes. For the avoidance of doubt, Dowling Jones Design shall not be liable for any reliance on these measurements. © 2015 www.dowlingjones.com 020 7610 9933

This floorplan is for illustration purposes only and is not to scale. The position and size of doors, windows, appliances and other features are approximate.

**Tenure:** Freehold

**Council Tax Band:** G



Fulham & Parsons Green | 020 7731 3388 | fulham@winkworth.co.uk



for every step...

winkworth.co.uk

Winkworth wishes to inform prospective buyers and tenants that these particulars are a guide and act as information only. All our details are given in good faith and believed to be correct at the time of printing but they don't form part of an offer or contract. No Winkworth employee has authority to make or give any representation or warranty in relation to this property. All fixtures and fittings, whether fitted or not are deemed removable by the vendor unless stated otherwise and room sizes are measured between internal wall surfaces, including furnishings.