



STOKE NEWINGTON HIGH STREET, LONDON, N16  
£325,000 LEASEHOLD

## A SECOND FLOOR ONE BEDROOM APARTMENT IN A CONVERTED CINEMA ON STOKE NEWINGTON HIGH STREET

Hackney | 020 8986 4216 | [hackney@winkworth.co.uk](mailto:hackney@winkworth.co.uk)

**Winkworth**





## DESCRIPTION:

A superb, one bedroom, second floor apartment in a converted cinema situated in the heart of Stoke Newington. Standing at in excess of 460 sq. ft, the property has been well decorated and maintained by the current owner with new double-glazed windows throughout.

Upon entering the property, you are greeted by a well-proportioned and generously sized bedroom, bathroom and an open plan kitchen and living room. The flat is filled with natural light and benefits from fitted wardrobes, bookshelves and a utility cupboard.

Set in the buzz of Stoke Newington High Street, a short walk from Abney Park, Clissold Park, Church Street and Newington Green, the area offers a variety of grocery shops, restaurants and boutiques. A weekly Farmers' Market takes place every Saturday in St. Paul's church yard which is just a short walk away. Convenient bus routes from the High Street bring you directly into the City, Shoreditch, Islington and the West End and underground stations Rectory Road, Dalston Kingsland and Dalston Junction are all within walking distance.

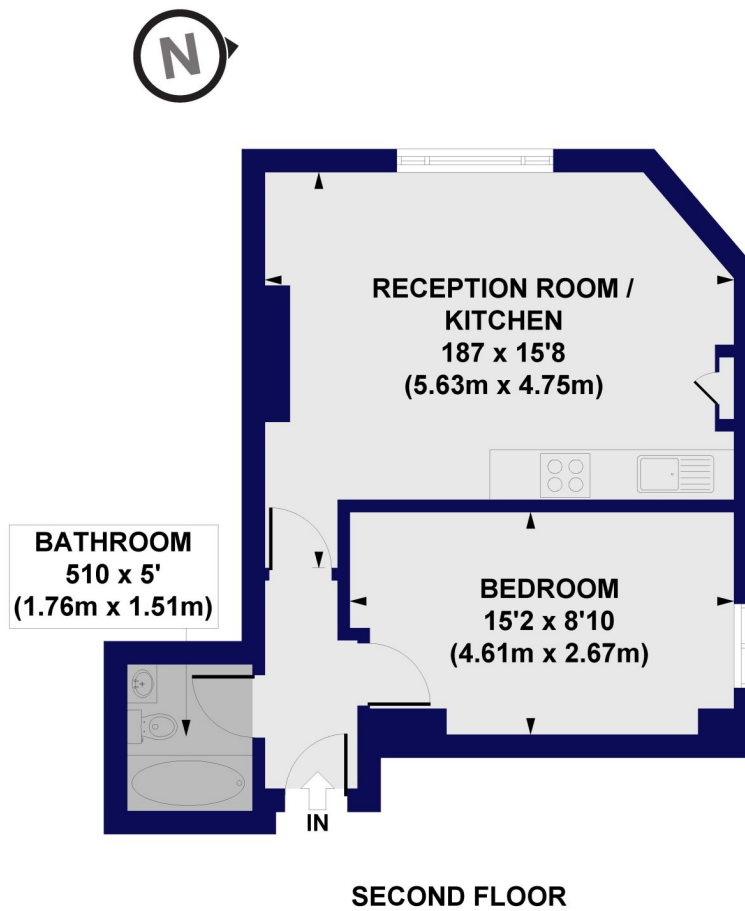
**Winkworth**



**Winkworth**



Stoke Newington High Street, N16  
Approx. Gross Internal Floor Area 462 sq. ft / 42.90 sq. m



All measurements of walls, doors, windows, fittings and appliances, including their size and location, are shown as standard sizes and do not constitute any warranty or representation by the seller, their agent or CP Creative. Any intending purchaser must satisfy himself by inspection or otherwise as to the correctness of the information contained in these plans. This plan is for illustrative purposes only and should be used as such by any prospective purchasers.

**Winkworth**

This floorplan is for illustration purposes only and is not to scale. The position and size of doors, windows, appliances and other features are approximate.

Hackney | 020 8986 4216 | [hackney@winkworth.co.uk](mailto:hackney@winkworth.co.uk)

**Winkworth**

[winkworth.co.uk](http://winkworth.co.uk)

See things differently

Winkworth wishes to inform prospective buyers and tenants that these particulars are a guide and act as information only. All our details are given in good faith and believed to be correct at the time of printing but they don't form part of an offer or contract. No Winkworth employee has authority to make or give any representation or warranty in relation to this property. All fixtures and fittings, whether fitted or not are deemed removable by the vendor unless stated otherwise and room sizes are measured between internal wall surfaces, including furnishings.