



SUTHERLAND AVENUE, LONDON, W9 £2,000,000 LEASEHOLD

Winkworth is excited to bring to the market this rare find on one of Maida Vale's most prestigious roads. This three double bedroom garden apartment on Sutherland Avenue has been tastefully decorated and finished to an exceptionally high standard, benefiting from unrivalled natural light due to the property's position at the end of a row of Victorian terraced houses. The spacious kitchen with an island overlooks the apartment's well-kept private garden, and a set of Bifold doors opens up to a separate patio area. Leading off the kitchen is a large reception room with two further sets of Bifold doors, allowing for outstanding indoor-outdoor living. The three double bedrooms, two of which are ensuite, benefit from high ceilings, with the second bedroom's glass double doors allowing for direct access to the garden. The apartment forms part of a handsome Victorian end of terrace house in the heart of Maida Vale, close to all local amenities, including the boutique shops and cafes on Clifton Road (approx. 0.5 miles), the famous Regent's Canal, and the Underground Station (approx. 0.3 miles) at Warwick Avenue

Three Double Bedrooms | Two En - Suite Shower Rooms | Family Bathroom | Kitchen | Private Garden | Separate Patio Area | Reception room | Leasehold

View our virtual tour here: https://youtu.be/xGjNYrDH_jA

Winkworth

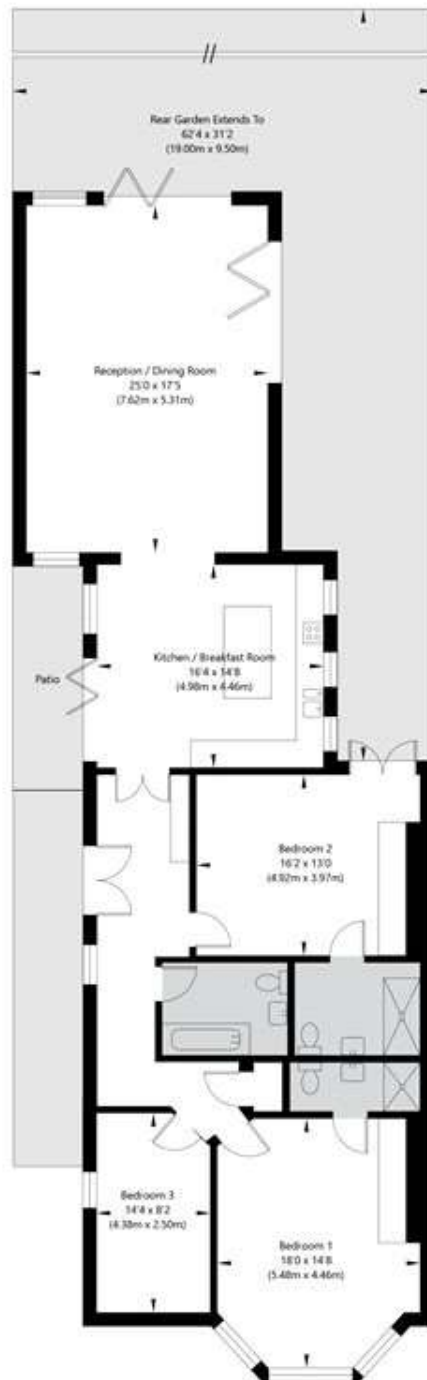
for every step...

[winkworth.co.uk/maida-vale](https://www.winkworth.co.uk/maida-vale)



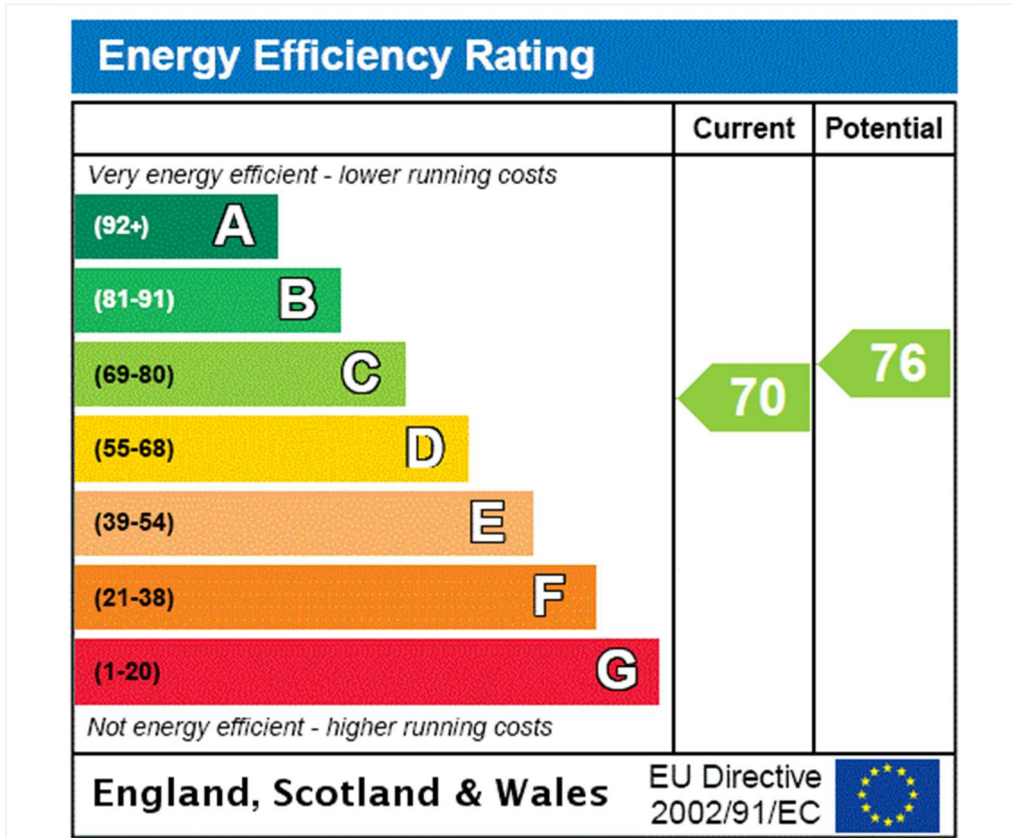
Sutherland Avenue, London W9 2HG

Ground Floor
GROSS INTERNAL FLOOR AREA
APPROX. 151.92 SQ M / 1635 SQ FT



APPROXIMATE GROSS INTERNAL FLOOR AREA 151.92 SQ M / 1635 SQ FT
THIS FLOOR PLAN IS FOR ILLUSTRATIVE PURPOSES ONLY AND
SHOULD BE USED FOR THIS PURPOSE BY PROSPECTIVE APPLICANTS AS ITS NOT TO SCALE.

(c) AMBERSHORE PIX LIMITED / PHOTO - VIDEO - FLOOR PLANS / 0800 999 1577 / WWW.AMBERSHOREPIX.CO.UK



Tenure: Leasehold

Term: Expires - 29/09/2171

Service Charge: £6,941 per annum

Ground Rent: £200.00 Annually (subject to increase)

Council Tax Band: G

Where no figures are shown, we have been unable to ascertain the information. All figures that are shown were correct at the time of printing.

Where no figures are shown, we have been unable to ascertain the information. All figures that are shown were correct at the time of printing. These particulars are not an offer or contract, nor part of one. You should not rely on statements by Winkworth in the particulars or by word of mouth or in writing "information" as being factually accurate about the property, its condition or its value. Winkworth does not have any authority to make any representations about the property, and accordingly any information given is entirely without responsibility on the part of the agents, seller(s) or lessor(s). These particulars are prepared on the basis of the information supplied by our client and are a rough guide for information only. The photographs show only certain parts of the property. We are not able to check all of the information and therefore are unable to guarantee accuracy. All interested parties are therefore advised to undertake all necessary inspections and checks that they deem appropriate. Where displayed, the square footage is taken from the floor plans, which are created by an independent supplier. These measurements are approximate and included for illustrative purposes only. The measurements may vary. Winkworth does not make any representation as to the accuracy of these measurements and you should seek to verify them for yourself. Winkworth accept no liability for any loss you may suffer if you rely on these measurements. All fixtures and fittings, whether fitted or not are deemed removable by the vendor unless stated. Any reference to alterations to, or use of, any part of the property does not mean that any necessary planning, building regulations or other consent has been obtained. Amenities and appliances have not been tested



Maida Vale | 211-213 Sutherland Avenue, London, W9 1RU | 020 7289 1692 |

maidavale@winkworth.co.uk

for every step...

winkworth.co.uk/maida-vale

Winkworth wishes to inform prospective buyers and tenants that these particulars are a guide and act as information only. All our details are given in good faith and believed to be correct at the time of printing but they don't form part of an offer or contract. No Winkworth employee has authority to make or give any representation or warranty in relation to this property. All fixtures and fittings, whether fitted or not are deemed removable by the vendor unless stated otherwise and room sizes are measured between internal wall surfaces, including furnishings.