

BATH HOUSE, DUNBRIDGE STREET, LONDON, E2  
**£450,000 SHARE OF FREEHOLD**

**A ONE DOUBLE BEDROOM APARTMENT WITH PRIVATE  
COURTYARD/ GARDEN AND A SEPERATE OFFICE SPACE  
WITHIN A GRADE II LISTED VICTORIAN BATH HOUSE**

Shoreditch | 020 7749 7650 | [shoreditch@winkworth.co.uk](mailto:shoreditch@winkworth.co.uk)

**Winkworth**

*winkworth.co.uk*

See things differently



## DESCRIPTION:

A 606 sq. ft. one bedroom apartment with a private garden and a separate office space located within a sought-after Grade II listed Victorian Bath House conversion in Bethnal Green/Shoreditch.

This beautiful apartment has been sympathetically converted to suit a modern lifestyle with an open plan living room kitchen/ dinner, a separate office space, a double bedroom with plenty inbuilt storage space, and a private West facing courtyard/ garden accessed through the patio doors from the office space. The apartment is complete with a three-piece family bathroom with a bathtub.

The Bath House is a well maintained, secure gated development that is also home to Britain's oldest boxing gym which is housed in a corner of this former Victorian Bath House on Cheshire Street, Bethnal Green. Residents also benefit from a communal courtyard with water feature. Situated on Dunbridge Street, the apartment is well located for all the shops, eateries, parks and markets the area has to offer notably; Brick Lane, Columbia Road, Broadway Market, Redchurch Street and Spitalfields. The green open space of Weavers Field is only 0.1 mile away.

The property is well located for easy access to the City, Canary Wharf, Stratford and the West End with Bethnal Green Overground Station 0.3 miles, Shoreditch High Street Overground Station 0.5 miles and Bethnal Green (Central Line) underground station 0.6 miles. Several well-connected bus routes running from both Vallance Road and Bethnal Green Road. There are also a number of Santander docking stations conveniently located nearby.

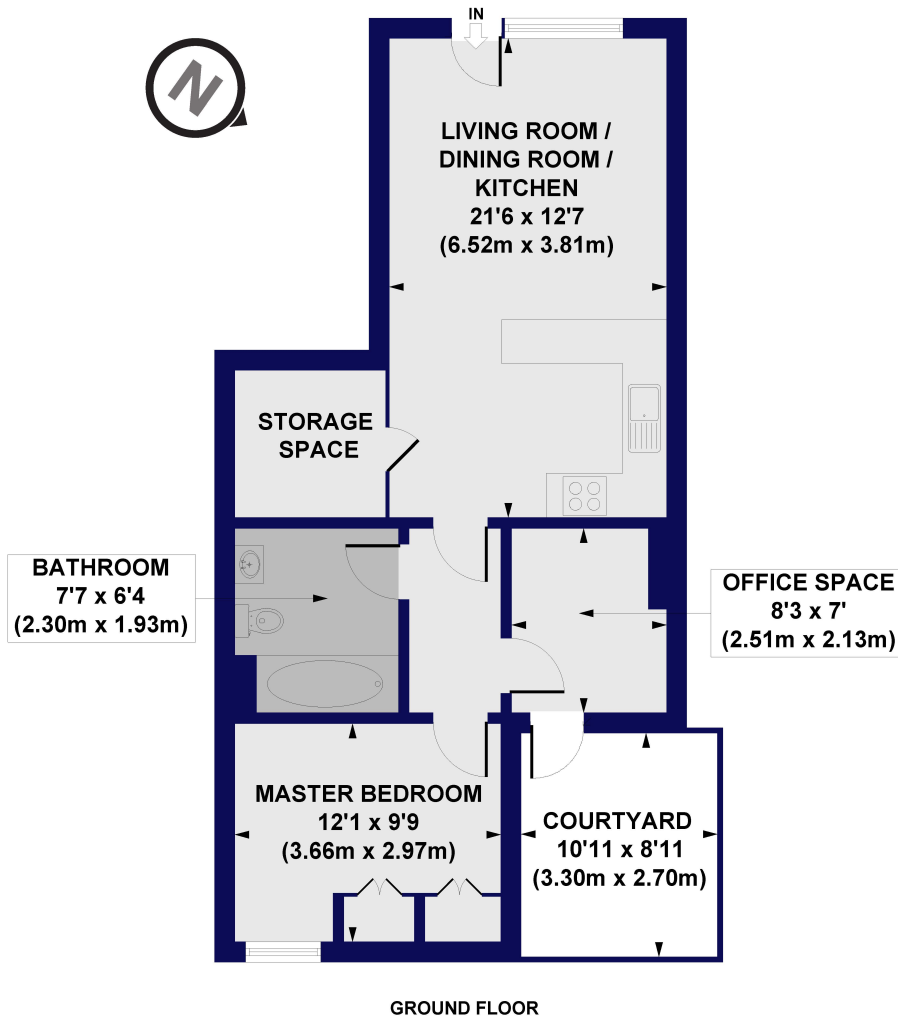
**Winkworth**





**Winkworth**

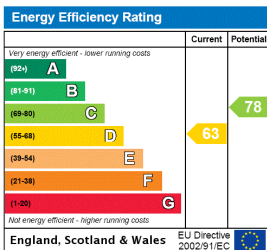
**Bath House, Dunbridge Street, E2**  
 Approx. Gross Internal Floor Area 606 sq. ft / 56.32 sq. m



All measurements of walls, doors, windows, fittings and appliances, including their size and location, are shown as standard sizes and do not constitute any warranty or representation by the seller, their agent or CP Creative. Any intending purchaser must satisfy himself by inspection or otherwise as to the correctness of the information contained in these plans. This plan is for illustrative purposes only and should be used as such by any prospective purchasers.

**Winkworth**

This floorplan is for illustration purposes only and is not to scale. The position and size of doors, windows, appliances and other features are approximate.



Shoreditch | 020 7749 7650 | shoreditch@winkworth.co.uk



winkworth.co.uk

See things differently

Winkworth wishes to inform prospective buyers and tenants that these particulars are a guide and act as information only. All our details are given in good faith and believed to be correct at the time of printing but they don't form part of an offer or contract. No Winkworth employee has authority to make or give any representation or warranty in relation to this property. All fixtures and fittings, whether fitted or not are deemed removable by the vendor unless stated otherwise and room sizes are measured between internal wall surfaces, including furnishings.