



KENSINGTON GARDENS SQUARE, W2
£995 PER WEEK (£4,311.66 PCM) FURNISHED

A FANTASTIC OPPORTUNITY TO RENT THIS BEAUTIFULLY REFURBISHED TWO BEDROOM TWO BATHROOM APARTMENT IN THIS WELL-KEPT BUILDING WITH LIFT AND THE RIGHT TO APPLY FOR ACCESS TO THE COMMUNAL GARDENS.

Notting Hill Lettings | 0207 727 3227 | nottinghill@winkworth.co.uk

Winkworth

for every step...

winkworth.co.uk



DESCRIPTION:

The property comprises entrance on the first floor, reception room with fully integrated open plan kitchen, spacious master bedroom with ensuite shower room fantastic storage, second double bedroom and a further bathroom. The property has been newly refurbished throughout and comes with the right to apply for the use of the communal gardens opposite. Available furnished and viewings are highly recommended.

Utilities:

Electricity – Mains

Water – Mains

Sewerage – Mains

Heating – Gas

Broadband <https://checker.ofcom.org.uk/en-gb/broadband-coverage>

Mobile Coverage <https://checker.ofcom.org.uk/en-gb/mobile-coverage>

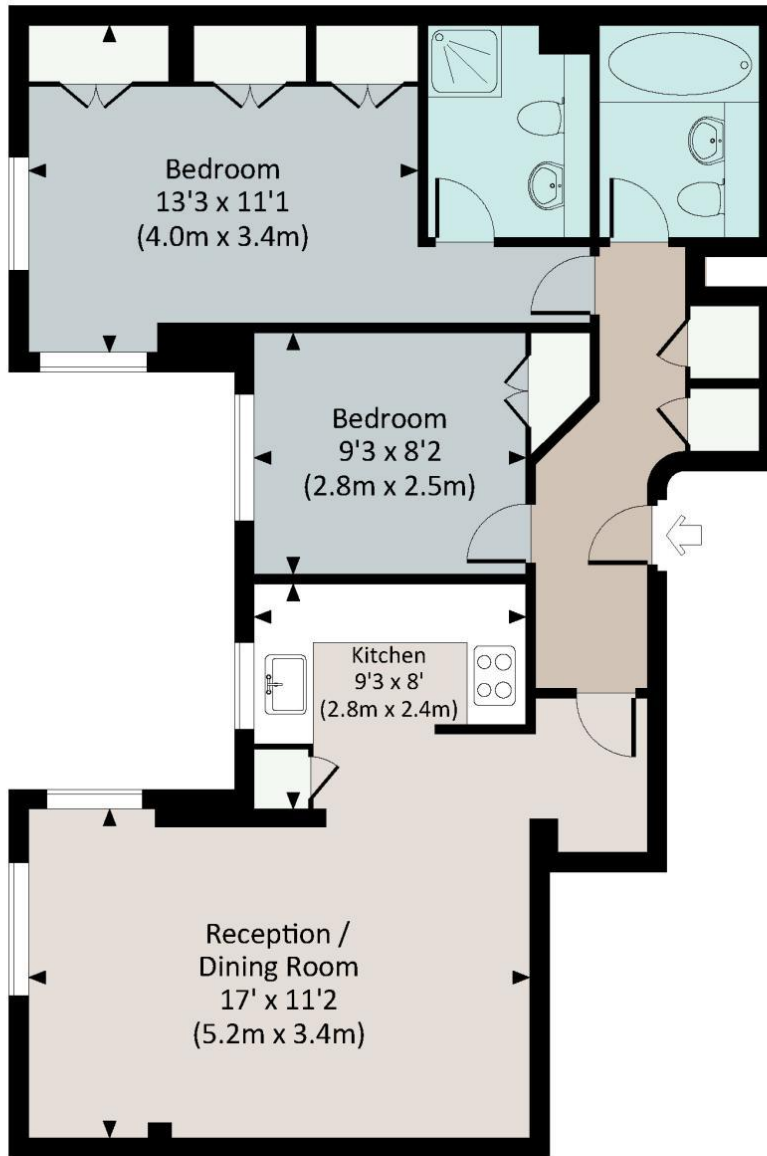
LOCATION:

Kensington Gardens Square is a square of imposing stucco fronted buildings encircling two communal gardens, running south from Westbourne Grove with its many shops and restaurants, and just to the west of Queensway and its many amenities and transport links.



KENSINGTON GARDENS SQUARE, W2

Approx. gross internal area
686 Sq.Ft. / 63.7 Sq.M

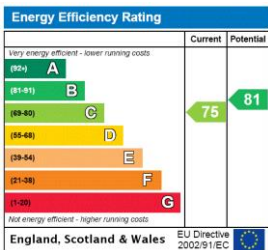


FIRST FLOOR



All measurements have been made in accordance with RICS Code of Measuring Practice which are approximate only and only for illustrative purposes. For the avoidance of doubt, Dowling Jones Design shall not be liable for any reliance on these measurements. © 2015 www.dowlingjones.com 020 7630 9933

This floorplan is for illustration purposes only and is not to scale. The position and size of doors, windows, appliances and other features are approximate.



Deposit: £4,975

Holding Deposit: £995

Council Tax Band: E (Westminster)

Where no figures are shown, we have been unable to ascertain the information. All figures that are shown were correct at the time of printing.

Notting Hill Lettings | 0207 727 3227 | nottinghill@winkworth.co.uk



for every step...

winkworth.co.uk

Winkworth wishes to inform prospective buyers and tenants that these particulars are a guide and act as information only. All our details are given in good faith and believed to be correct at the time of printing but they don't form part of an offer or contract. No Winkworth employee has authority to make or give any representation or warranty in relation to this property. All fixtures and fittings, whether fitted or not are deemed removable by the vendor unless stated otherwise and room sizes are measured between internal wall surfaces, including furnishings.