



Princesshay Garden Apartments, Exeter, EX1 1GE

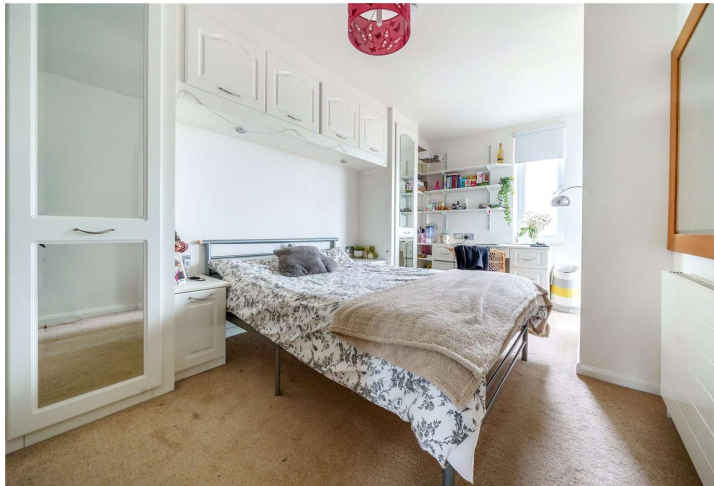
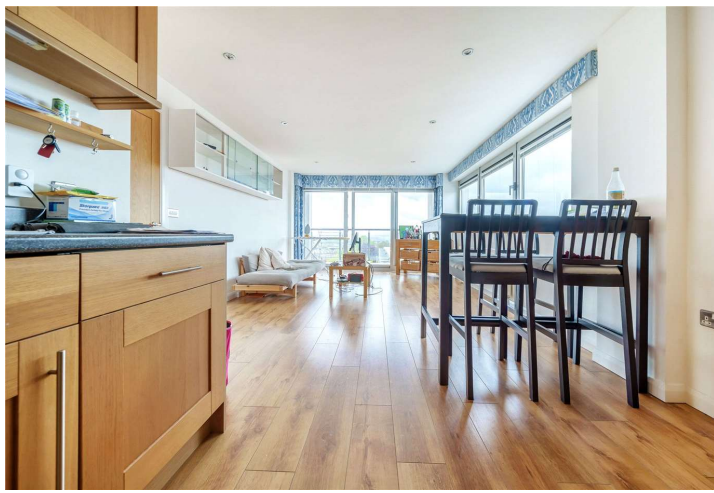
A modern two bedroom apartment situated on the top floor of this prestigious development located in the Heart of Princesshay with stunning views across Exeter City.

Winkworth

Crediton: 01363 773757
crediton@winkworth.co.uk

Exeter: 01392 271177
exeter@winkworth.co.uk

Winkworth.co.uk
Tiverton: 01884 675 675
tiverton@winkworth.co.uk



DESCRIPTION:

Princesshay garden apartments is in the heart of the centre of Exeter in the prestigious Princesshay development. Princesshay is the hub for shopping and dining in Exeter city centre.

The Property:

Communal entrance with lift and stairs to the top floor.

Entrance Hallway - Spacious entrance hallway with intercom phone system to allow access from the communal doors on the ground floor. Storage cupboards, radiator, wooden flooring and doors leading to..

Bedroom One - Spacious bedroom with double glazed window to the front aspect, built in wardrobe, dressing table and drawers. Radiator, carpet flooring and door leading to..

En-suite - Fully tiled en-suite shower room with double shower cubicle with glass surround, low level WC and pedestal wash hand basin with mixer tap over. Heated towel rail and tiled flooring.

Living/Kitchen/Dining Room - A great open plan living space, with bi folding doors on to the balcony with the most wonderful views over Southernhay, the cathedral and countryside beyond. Wooden flooring and radiator.

The kitchen has a range of wall and base units fully tiled surround and quartz work top over. Integrated electric oven and in built microwave as well as integrated fridge/freezer, washing machine and dishwasher. Four ring electric hob with extractor fan over, sink with mixer tap and drainer. Spotlights and wooden flooring.

Bedroom Two - Double bedroom, fitted wardrobes and dressing table, double glazed window to the rear aspect with lovely views. Radiator and carpet flooring.

Bathroom - Modern three piece white bathroom suite comprising, bath with shower over with glass screen, low level WC and pedestal wash hand basin with mixer tap over and mirrored bathroom cabinet above. Ladder style heated towel rail and tiled flooring.

Outside - To the front of the property is a shared roof terrace and there is an allocated parking space situated in a secure carpark which can be accessed by the apartment complex lift.



At a glance....

Stunning Apartment City Centre Location

Two Double Bedrooms

Master with En-Suite

Bathroom

Open plan living/Dining/Kitchen

Secure Allocated Parking

Balcony

Tenants in Situ

Extended Lease

PROPERTY INFORMATION:

Leasehold – Extended to 24 December 2196

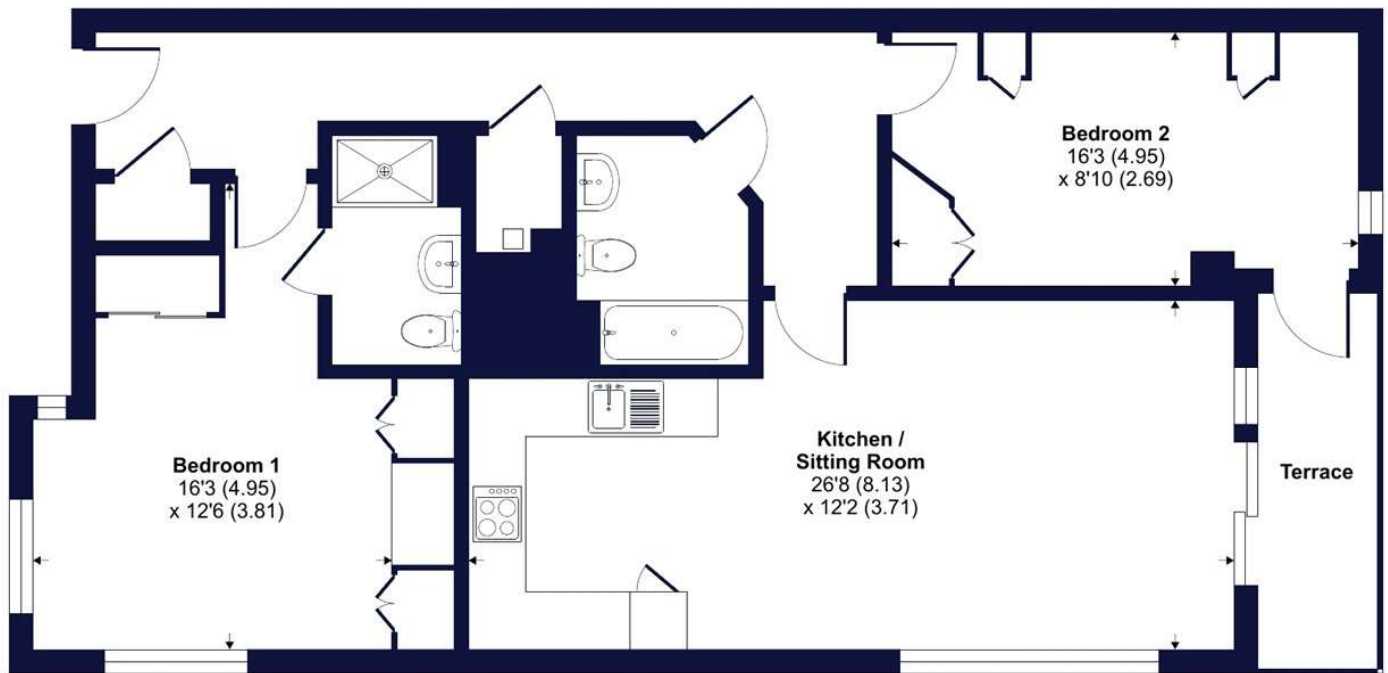
Council tax Band: D

Mains electric, water and drainage

Blueboy Lane, Dix's Field, Exeter, EX1

Approximate Area = 906 sq ft / 84.1 sq m

For identification only - Not to scale



FIFTH FLOOR



Certified
Property
Measurer

Floor plan produced in accordance with RICS Property Measurement Standards incorporating International Property Measurement Standards (IPMS2 Residential). © nchecon 2023. Produced for Winkworth. REF: 976367

Winkworth

NOTICE: Whilst every effort has been made to ensure the accuracy of these sales details, they are for guidance purposes only and prospective purchasers are advised to seek their own professional advice as well as to satisfy themselves by inspection or otherwise as to their correctness. No representation or warranty whatsoever is made in relation to this property by Winkworth or its employees nor do such sales details form part of any offer or contract.

Winkworth

Crediton: 01363 773757
crediton@winkworth.co.uk

Exeter: 01392 271177
exeter@winkworth.co.uk

Tiverton: 01884 675 675
tiverton@winkworth.co.uk