



ALFRED STREET, READING, RG1 7LS
OFFERS IN EXCESS OF £265,000 LEASEHOLD

A MODERN TWO BEDROOM TOWN CENTRE APARTMENT FOR SALE WITH NO CHAIN COMPLICATIONS

Reading | 0118 4022 300 | reading@winkworth.co.uk

Winkworth

for every step...

winkworth.co.uk



DESCRIPTION:

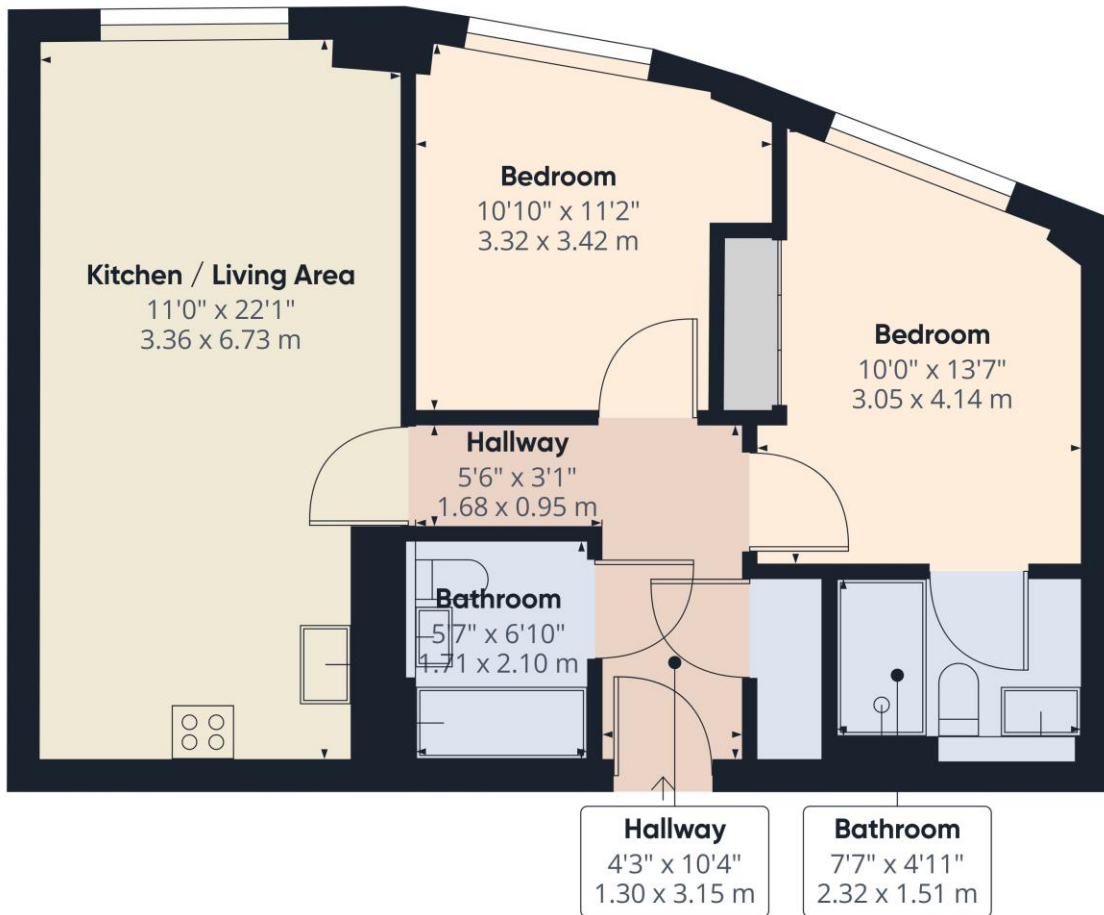
A two bedroom first floor town centre apartment. Located in the popular Chatham Place development on the western side of the town centre a short walk to Reading Station with its direct train links to London Paddington in under 25 minutes. Living accommodation comprises an open plan living space with a modern fitted kitchen with Quartz work surfaces and a range of integrated appliances. There are two double bedrooms, the master with built in wardrobes and an ensuite bathroom, a further bathroom and a utility cupboard in the entrance hall which houses the washer dryer. This contemporary apartment offers excellent value and would suit a first time buyer, investor or down-sizer and is for sale with no chain complications.

AT A GLANCE

- Modern First Floor Two Bedroom Apartment
- Popular Chatham Place Development
- Excellent Town Centre Location
- Open Plan Living Space With a Contemporary Fitted Kitchen
- Master Bedroom With Built in Wardrobes and En-Suite
- No Parking
- No Onward Chain







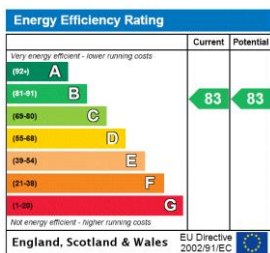
Approximate total area⁽¹⁾
618.47 ft²
57.46 m²

(1) Excluding balconies and terraces

While every attempt has been made to ensure accuracy, all measurements are approximate, not to scale. This floor plan is for illustrative purposes only.

GIRAFFE360

This floorplan is for illustration purposes only and is not to scale. The position and size of doors, windows, appliances and other features are approximate.



Tenure: Leasehold

Term: 238 year and 9 months

Service Charge: £2949 per annum

Ground Rent: £ 350 Annually (subject to increase)

Council Tax Band: D

Where no figures are shown, we have been unable to ascertain the information. All figures that are shown were correct at the time of printing.



Reading | 0118 4022 300 | reading@winkworth.co.uk

for every step...

winkworth.co.uk

Winkworth wishes to inform prospective buyers and tenants that these particulars are a guide and act as information only. All our details are given in good faith and believed to be correct at the time of printing but they don't form part of an offer or contract. No Winkworth employee has authority to make or give any representation or warranty in relation to this property. All fixtures and fittings, whether fitted or not are deemed removable by the vendor unless stated otherwise and room sizes are measured between internal wall surfaces, including furnishings.