



SHELDON SQUARE, PADDINGTON, W2
GUIDE PRICE £900,000
LEASEHOLD ABOUT 977 YEARS REMAINING

A STYLISHLY PRESENTED AND WELL PROPORTIONED MODERNISED TWO BEDROOM, TWO BATHROOM, THIRD FLOOR (WITH LIFT) APARTMENT, SET IN A SUPER CONNECTED AND CONVENIENT CANAL SIDE RESIDENTIAL DEVELOPMENT WITHIN W2.

Paddington & Bayswater | 020 7467 5770 | paddington@winkworth.co.uk

Winkworth

for every step...

winkworth.co.uk



DESCRIPTION:

This gorgeous apartment features a long lease, day porter, secure underground parking space, comfort cooling, winter garden, Duravit electronic bidets, engineered oak flooring and contemporary modern wall lights by Tom Dixon. Sheldon Square has been seamlessly designed to connect local communities with local amenities; critically, with convenience in mind, as only a few meters away - the campus like feel, offers a host of choices, from food on the move to fantastic dining - music, film and events will entertain you all year round. Includes the essential 'local Sainsbury's'. The mainline Paddington Station is within close proximity, offering (Circle, District, Bakerloo, Hammersmith & City, National Rail, Heathrow Express & the Elizabeth Line).



Winkworth

for every step...



Winkworth

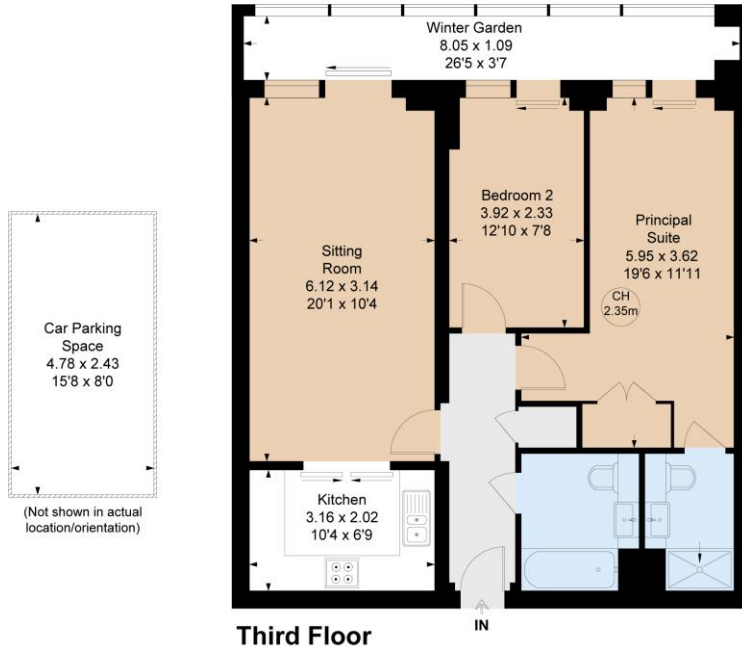
for every step...

Sheldon Square, W2

Approximate Gross Internal Area = 81.2 sq m / 874 sq ft
(Including Winter Garden)

Winter Garden Area = 9.23 sq m / 99 sq ft

Key :
CH - Ceiling Height



Third Floor

Not to scale, for guidance only and must not be relied upon as a statement of fact.
All measurements and areas are approximate only

This floorplan is for illustration purposes only and is not to scale. The position and size of doors, windows, appliances and other features are approximate.

Tenure: Leasehold

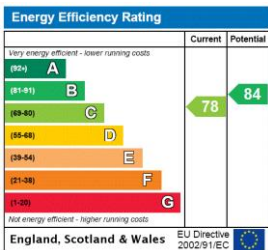
Term: About 977 year and 5 months remaining

Service Charge: About £12,200 per annum

Ground Rent: About £350 per annum (subject to increase)

Council Tax Band: G

Where no figures are shown, we have been unable to ascertain the information. All figures that are shown were correct at the time of printing.



Winkworth

Paddington & Bayswater | 020 7467 5770 | paddington@winkworth.co.uk

for every step...

winkworth.co.uk

Winkworth wishes to inform prospective buyers and tenants that these particulars are a guide and act as information only. All our details are given in good faith and believed to be correct at the time of printing but they don't form part of an offer or contract. No Winkworth employee has authority to make or give any representation or warranty in relation to this property. All fixtures and fittings, whether fitted or not are deemed removable by the vendor unless stated otherwise and room sizes are measured between internal wall surfaces, including furnishings.