



BRAILSFORD ROAD, SW2
£2,000 PER MONTH FURNISHED, PART FURNISHED

**A TOP FLOOR TWO DOUBLE BEDROOM
VICTORIAN CONVERSION IDEALLY LOCATED
FOR BRIXTON AND HERNE HILL**

Herne Hill | 0207 501 8950 | hernehill@winkworth.co.uk

Winkworth

for every step...

winkworth.co.uk

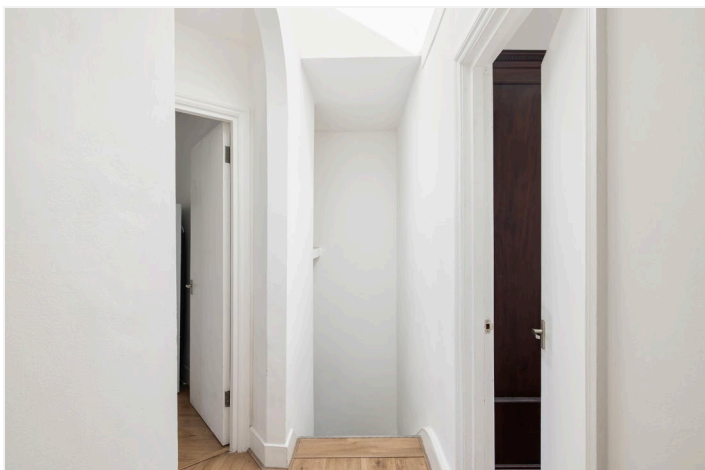


DESCRIPTION:

Available exclusively through Winkworth, we are delighted to present this charming Victorian conversion set on the top floor of this terraced house with views overlooking the leafy Brockwell Park. The accommodation briefly comprises of a reception/diner, a fitted kitchen equipped with the usual appliances, two double bedrooms with the principal bedroom having a light and airy feel with views that looks onto the park. There is also a family bathroom with a shower over the bath, a wash hand basin and a WC. A feature of this property is the oak flooring throughout. Brailsford Road is ideally located for the amenities and transport links of Herne Hill (Thameslink) and Brixton Underground Tube stations (Victoria Line) and is close to the lovely Brockwell Park with its iconic Lido and the Farmers market and Brixton Village is moments away. Available from the 15th of April 2023 on a part furnished/furnished basis.

AT A GLANCE

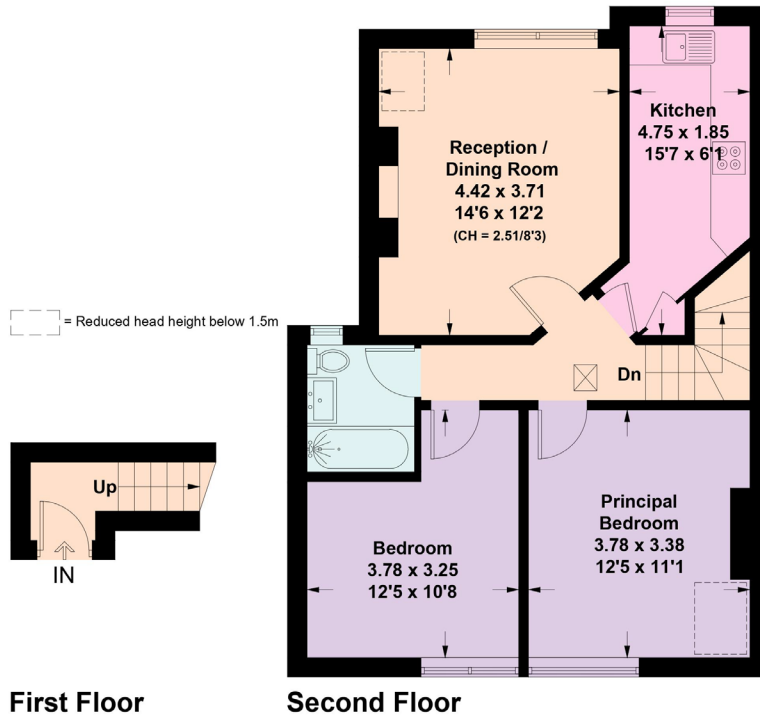
- Victorian Conversion
- Top Floor Flat (Second Floor)
- Reception/Diner
- Fitted Kitchen
- Two Double Bedrooms
- Modern Bathroom
- Furnished/Part Furnished
- Lambeth Council Tax: C
- Available from the 15th of April 2023





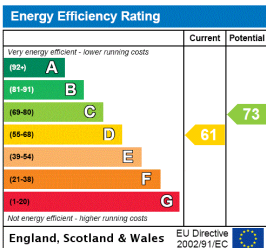
Brailsford Road, SW2

Approximate Floor Area = 62.3 sq m / 670 sq ft
Including Limited Use Area (2.1 sq m / 23 sq ft)



This plan is for layout guidance only. Not drawn to scale unless stated. Windows and door openings are approximate. Whilst every care is taken in the preparation of this plan, please check all dimensions, shapes and compass bearings before making any decisions reliant upon them. (ID952308)

This floorplan is for illustration purposes only and is not to scale. The position and size of doors, windows, appliances and other features are approximate.



Herne Hill | 0207 501 8950 | hernehill@winkworth.co.uk



for every step...

winkworth.co.uk

Winkworth wishes to inform prospective buyers and tenants that these particulars are a guide and act as information only. All our details are given in good faith and believed to be correct at the time of printing but they don't form part of an offer or contract. No Winkworth employee has authority to make or give any representation or warranty in relation to this property. All fixtures and fittings, whether fitted or not are deemed removable by the vendor unless stated otherwise and room sizes are measured between internal wall surfaces, including furnishings.