



**BRENT PARK ROAD, HENDON, NW4**  
**OIEO £525,000 FREEHOLD**

## **CHARMING 3-BEDROOM FAMILY HOME WITH SPACIOUS GARDEN**

Hendon | 020 8202 1031 | [hendon@winkworth.co.uk](mailto:hendon@winkworth.co.uk)

**Winkworth**

for every step...

[winkworth.co.uk](http://winkworth.co.uk)





## DESCRIPTION:

Discover the perfect blend of charm and potential in this delightful 3-bedroom family home! Bathed in natural light, this inviting property features a spacious reception room, three generously sized bedrooms, and a lovely private garden—ideal for relaxation and outdoor gatherings.

You'll also appreciate the convenience of a downstairs wet room and a detached garage at the rear, providing valuable storage or workspace options. In addition to this, there is a downstairs room that can be used as an office space or dining area. Plus, there's exciting potential for expansion, allowing you to customize and grow the space to suit your needs (subject to planning permission).

Located just moments from the bustling Brent Cross Shopping Centre, you'll have a variety of shops and amenities right at your doorstep. With excellent transport links nearby, this home combines a vibrant lifestyle with ample possibilities. Don't miss out on this gem—your next great opportunity awaits!

Please note this property does require modernisation but has great potential.



**Winkworth**

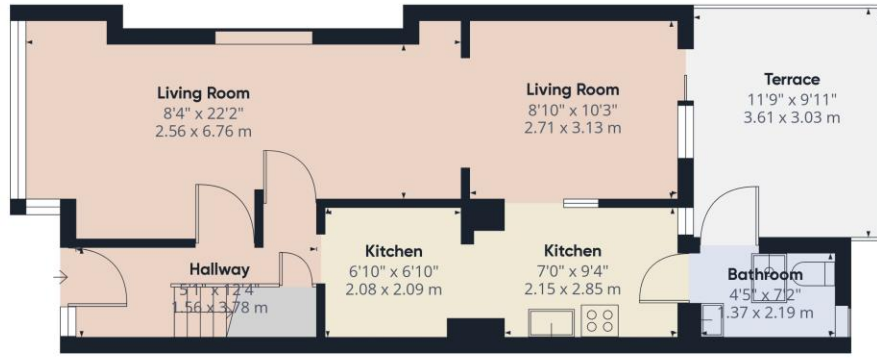
for every step...



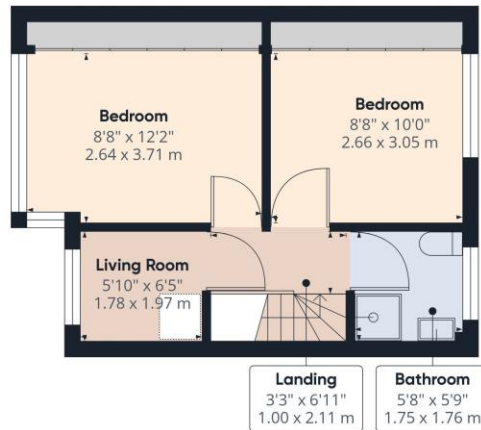
**Winkworth**

for every step...





Ground Floor Building 1



Floor 1 Building 1

**Approximate total area<sup>(1)</sup>**  
843.36 ft<sup>2</sup>  
78.35 m<sup>2</sup>

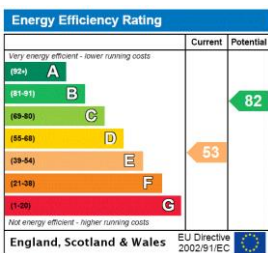
**Balconies and terraces**  
117.54 ft<sup>2</sup>  
10.92 m<sup>2</sup>

(1) Excluding balconies and terraces

While every attempt has been made to ensure accuracy, all measurements are approximate, not to scale. This floor plan is for illustrative purposes only.  
Calculations are based on RICS IPMS 3C standard.

GIRAFFE360

This floorplan is for illustration purposes only and is not to scale. The position and size of doors, windows, appliances and other features are approximate.



**Tenure:** Freehold

**Council Tax Band:** D

Where no figures are shown, we have been unable to ascertain the information. All figures that are shown were correct at the time of printing.

Hendon | 020 8202 1031 | hendon@winkworth.co.uk

**Winkworth**

for every step...

winkworth.co.uk

Winkworth wishes to inform prospective buyers and tenants that these particulars are a guide and act as information only. All our details are given in good faith and believed to be correct at the time of printing but they don't form part of an offer or contract. No Winkworth employee has authority to make or give any representation or warranty in relation to this property. All fixtures and fittings, whether fitted or not are deemed removable by the vendor unless stated otherwise and room sizes are measured between internal wall surfaces, including furnishings.