



CARDREW CLOSE, NORTH FINCHLEY, LONDON, N12
£350,000 LEASEHOLD

A TWO BEDROOM FIRST FLOOR MAISONETTE SET IN A QUIET RESIDENTIAL TURNING

Finchley | 020 8349 3388 | finchley@winkworth.co.uk

Winkworth

for every step...

winkworth.co.uk



Winkworth

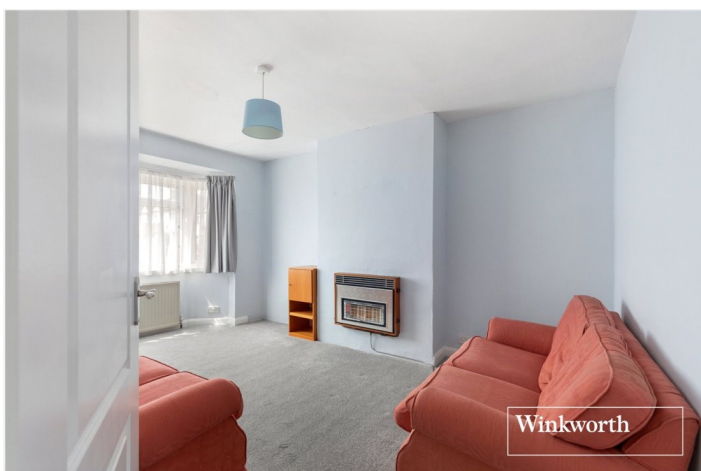
DESCRIPTION:

STAMP DUTY FREE FOR FIRST TIME BUYERS.

Set in a quiet residential turning within easy access to North Finchley High Road amenities, transport links, Friary Park and Good Ofsted Rated schools, we are pleased to offer this first floor maisonette. The property would benefit from some updating with potential to be a wonderful first purchase and comprises of spacious reception room, kitchen, bathroom and two bedrooms. Further benefits include a long lease, access to private section of garden and being offered on a chain free basis. An internal viewing is highly recommended!

AT A GLANCE

- First Floor Maisonette
- Two bedrooms
- Reception room
- Kitchen & Bathroom
- Private section of garden
- Long Lease
- Offered Chain Free



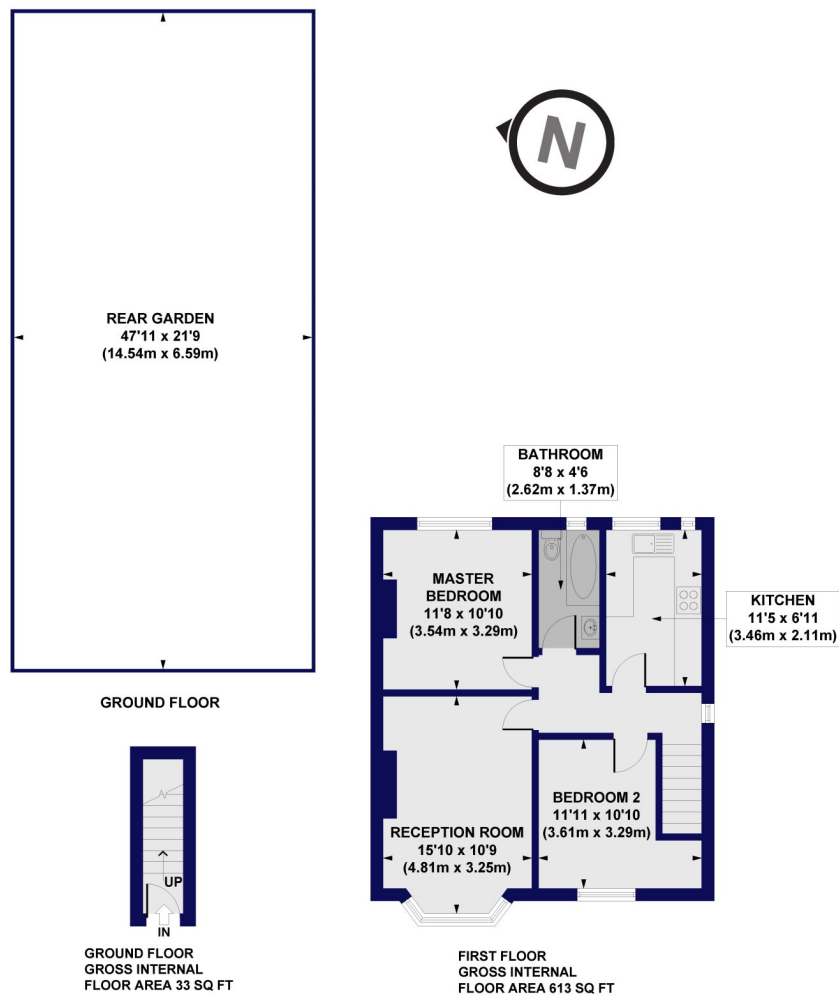
Winkworth



Winkworth



Cardrew Close, N12
Approx. Gross Internal Floor Area 646 sq. ft / 60.04 sq. m



All measurements of walls, doors, windows, fittings and appliances, including their size and location, are shown as standard sizes and do not constitute any warranty or representation by the seller, their agent or CP Creative. Any intending purchaser must satisfy himself by inspection or otherwise as to the correctness of the information contained in these plans. This plan is for illustrative purposes only and should be used as such by any prospective purchasers.

Winkworth

This floorplan is for illustration purposes only and is not to scale. The position and size of doors, windows, appliances and other features are approximate.

Tenure: Leasehold

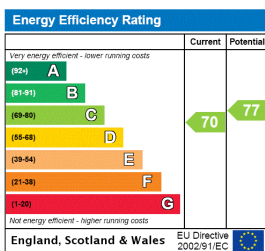
Term: 949 year and 8 months

Service Charge: £0 per annum

Ground Rent: £ 90 Annually (subject to increase)

Council Tax Band: C

Where no figures are shown, we have been unable to ascertain the information. All figures that are shown were correct at the time of printing.



Finchley | 020 8349 3388 | finchley@winkworth.co.uk

Winkworth

for every step...

winkworth.co.uk

Winkworth wishes to inform prospective buyers and tenants that these particulars are a guide and act as information only. All our details are given in good faith and believed to be correct at the time of printing but they don't form part of an offer or contract. No Winkworth employee has authority to make or give any representation or warranty in relation to this property. All fixtures and fittings, whether fitted or not are deemed removable by the vendor unless stated otherwise and room sizes are measured between internal wall surfaces, including furnishings.