



RUCKLIDGE AVENUE, LONDON, NW10  
**£660,000 FREEHOLD**

**A THREE DOUBLE BEDROOM FREEHOLD HOUSE, WITH OFF STREET PARKING, NO UPPER CHAIN AND POTENTIAL TO EXTEND (STPP). LOCATED MOMENTS FROM ROUNDWOOD PARK AND WILLESDEN JUNCTION STATION.**

**Kensal Rise & Queens Park | 0208 960 4947 | kensalrise@winkworth.co.uk**







### **LOCATION:**

Rucklidge Avenue enjoys a convenient location close to Willesden Junction Station, providing access to the Overground and Bakerloo Line. The area is well-served by a variety of coffee shops, delis, and gastropubs along Park Parade and in Kensal Green. Additionally, the Number 18 bus on Harrow Road offers a handy connection to Euston.







## DESCRIPTION:

We are delighted to present this charming three-bedroom family home, available with no upper chain. The ground floor features a bright and spacious through reception and dining room, complete with stripped wood flooring and characterful fireplaces, leading seamlessly to a generous kitchen at the rear. The kitchen offers plenty of space for dining and opens directly onto the low-maintenance, fully paved rear garden and side return area. A stylish wet room with WC completes the ground floor.

Upstairs, the first floor comprises three well-proportioned double bedrooms, all equipped with built-in storage, and a main bathroom with a classic three-piece suite.

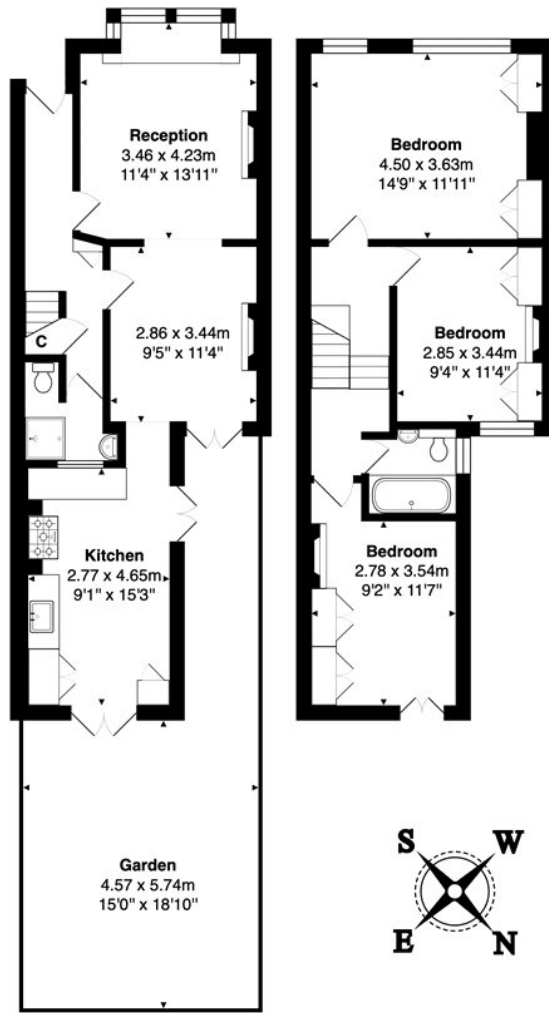
Additional highlights include off-street parking and excellent potential to extend into the loft or expand into the ground floor side return (STPP).

TENURE: FREEHOLD

[winkworth.co.uk](http://winkworth.co.uk)

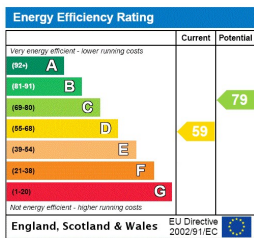
**Winkworth**

See things differently



**Total Area: 97.2 m<sup>2</sup> ... 1046 ft<sup>2</sup> (excluding garden)**  
All measurements are approximate and for display purposes only

This floorplan is for illustration purposes only and is not to scale. The position and size of doors, windows, appliances and other features are approximate.



**Kensal Rise & Queens Park** | 0208 960 4947 | [kensalrise@winkworth.co.uk](mailto:kensalrise@winkworth.co.uk)

**Winkworth**

[winkworth.co.uk](http://winkworth.co.uk)

See things differently

winkworth wishes to inform prospective buyers and tenants that these particulars are a guide and act as information only. All our details are given in good faith and believed to be correct at the time of printing but they don't form part of an offer or contract. No Winkworth employee has authority to make or give any representation or warranty in relation to this property. All fixtures and fittings, whether fitted or not are deemed removable by the vendor unless stated otherwise and room sizes are measured between internal wall surfaces, including furnishings.