



GREYHOUND ROAD, LONDON, NW10
OIEO £550,000 FREEHOLD

A STUNNING TWO DOUBLE BEDROOM, TWO BATHROOM, SPLIT LEVEL FLAT SPREAD OVER 788 SQFT PRIMELY LOCATED IN KENSAL RISE.

Kensal Rise & Queens Park | 0208 960 4947 | kensalrise@winkworth.co.uk





LOCATION:

Greyhound Road itself is a popular street as it is located less than a ¼ mile from Kensal Green Underground and Overground station (Bakerloo Line zone 2 and Overground to Euston), as well as being a short walk to Kensal Rise Station (Overground). Buyers have a lovely local destination for a cup of coffee, a quick bite to eat or a drink at the array of popular spots offered along both College Road and Chamberlayne Road.





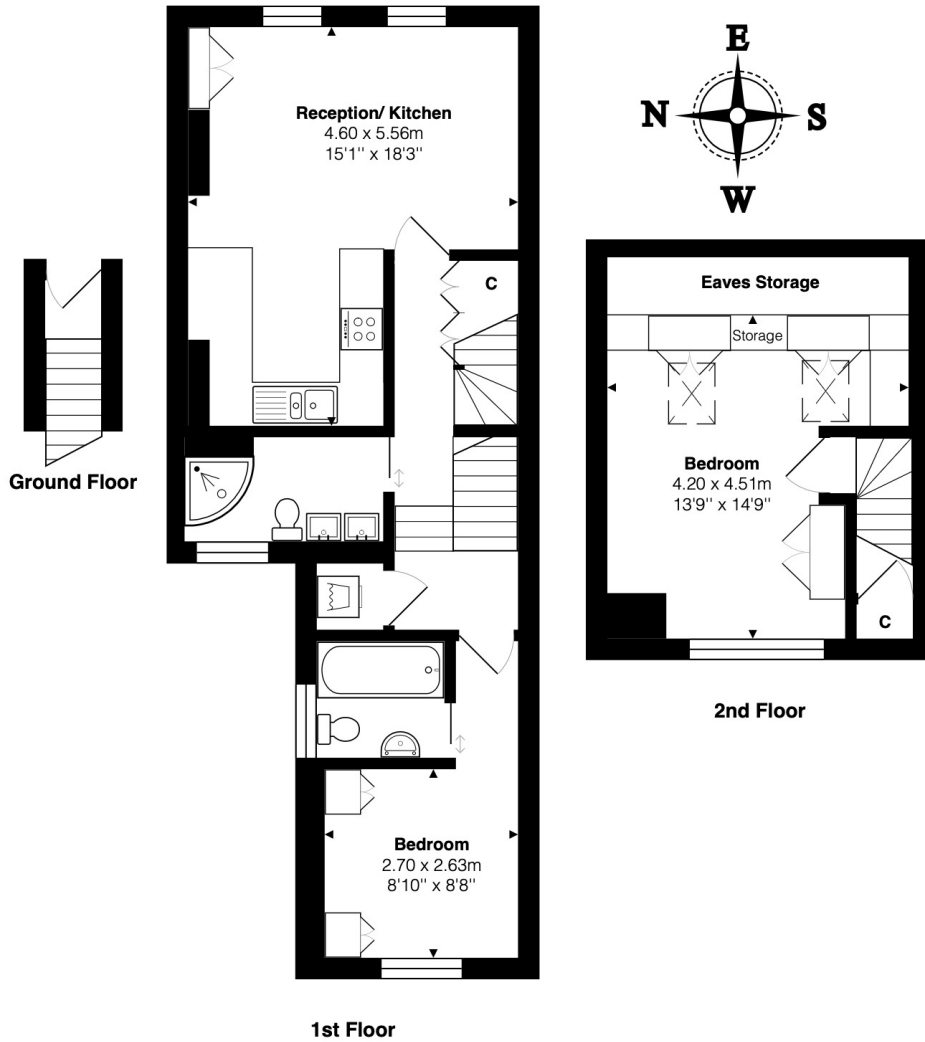
DESCRIPTION:

This flat is to a contemporary and high standard throughout. The front of the property has been opened up to create a spacious 'L' shaped open plan reception and dining area with modern kitchen, integrated appliances and breakfast bar. To the rear of the flat there is one double bedroom with built in wardrobes and fully tiled three piece en-suite bathroom. Off the landing is the main shower room with double sink layout. Finally, upstairs the loft conversion houses another double room with ample eaves storage.

The flat further benefits from being full Freehold title.

Viewing of this lovely flat comes highly recommended.

Winkworth



Total Area: 73.2 m² ... 788 ft²

All measurements are approximate and for display purposes only

This floorplan is for illustration purposes only and is not to scale. The position and size of doors, windows, appliances and other features are approximate.

Kensal Rise & Queens Park | 0208 960 4947 | kensalrise@winkworth.co.uk

Winkworth

winkworth.co.uk

See things differently

winkworth wishes to inform prospective buyers and tenants that these particulars are a guide and act as information only. All our details are given in good faith and believed to be correct at the time of printing but they don't form part of an offer or contract. No Winkworth employee has authority to make or give any representation or warranty in relation to this property. All fixtures and fittings, whether fitted or not are deemed removable by the vendor unless stated otherwise and room sizes are measured between internal wall surfaces, including furnishings.