



159 JAGO COURT

NEWBURY RG14 7EZ

NO ONWARD CHAIN A modern, two bedroom, ground floor apartment in the Jago Court Development on the south side of town.

The property has been well maintained and is in good order throughout. The accommodation comprises of communal entrance with security intercom system, spacious entrance hallway with utility cupboard and plumbing for washing machine.

The kitchen is fully fitted with oven, hob, extractor and fridge/freezer. There is also space and plumbing for a dishwasher. The kitchen is open plan to the lounge with space for both living and dining.

There are two double rooms with en-suite to the master and built in storage. There is also a separate family bathroom.

This property also has the benefit of one off road parking space.

EPC: C

West Berkshire Council Tax Band: C



Winkworth

AT A GLANCE

- 753 Square feet/ 70 Square metres
- *NO ONWARD CHAIN*
- Two double bedrooms
- Two bath/shower rooms
- Kitchen
- Sitting/dining room
- Underfloor heating
- One parking space

UTILITIES

Electric heating
Mains water supply
Superfast broadband available. Some mobile providers may have limited signal so please check prior to viewing.

LEASEHOLD DETAILS

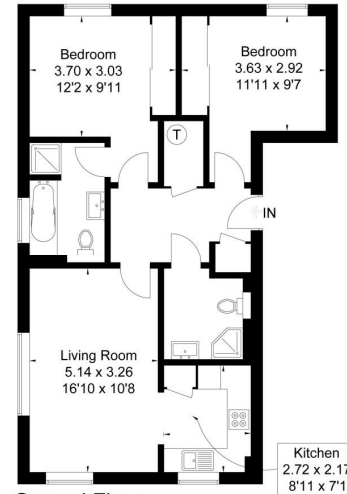
125 year lease from 2005.
Ground rent approx £200 pa
Service charge approx £1200 pa
Lease available on request.

DIRECTIONS

What3words///reply.boring.achieving

Jago Court, Newbury, RG14

Approximate Gross Internal Area = 70 sq m / 753 sq ft



FLOORPLANZ © 2014 0845 6344080 Ref: 133956

This plan is for layout guidance only. Drawn in accordance with RICS guidelines. Not drawn to scale unless stated. Windows & door openings are approximate. Whilst every care is taken in the preparation of this plan, please check all dimensions, shapes & compass bearings before making any decisions reliant upon them.



Newbury Office

43 Northbrook Street, Newbury, Berkshire RG14 1DT
01635 552552 | newbury@winkworth.co.uk

winkworth.co.uk/newbury

Winkworth

See things differently.