



Winkworth  
for every step...



Winkworth  
for every step...



Winkworth  
for every step...

MANOR CLOSE, KINGSBURY, LONDON, NW9  
**£600,000 FREEHOLD**

## FONDLY LOVED THREE BEDROOM MID TERRACE HOUSE

Kingsbury | 020 8204 0000 | [kingsbury@winkworth.co.uk](mailto:kingsbury@winkworth.co.uk)

**Winkworth**

for every step...

[winkworth.co.uk](http://winkworth.co.uk)



Making its first appearance on the market in 20 years, this cherished family home is now ready for its new chapter. Offering a fantastic opportunity for modernisation, it presents a blank canvas for a family to create their forever home. The property features a spacious through lounge/ dining room, and a kitchen on the ground floor, with three bedrooms and a family bathroom serving the first floor. Outside, you'll find a generous garden, perfect for outdoor enjoyment, along with a rear garage, a well-maintained front garden and off-street parking. There is also excellent potential to extend to the rear and into the loft (STPP). Situated just off the Kingsbury Road in a sought-after residential area, the home is within the catchment of the well-regarded Roe Green Primary School and Kingsbury High School making it an excellent choice for families with children. It is also conveniently located just minutes from Kingsbury Tube Station (Jubilee Line). An internal viewing is highly recommended.



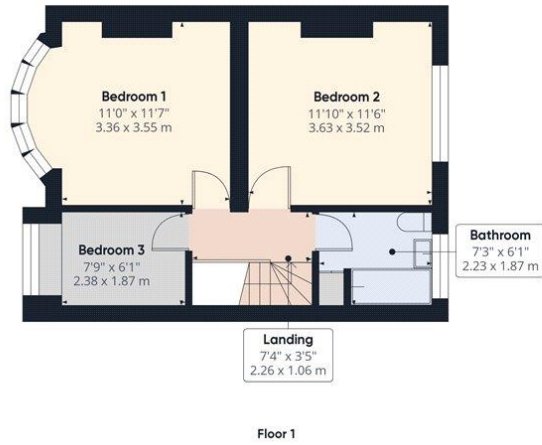
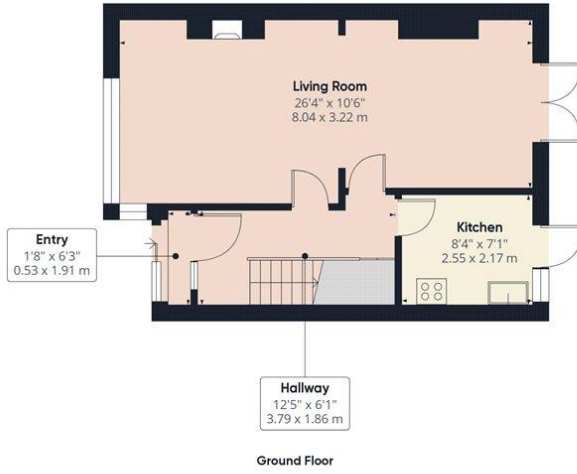
**Winkworth**

for every step...



**Winkworth**

for every step...



Approximate total area<sup>(1)</sup>  
826.03 ft<sup>2</sup>  
76.74 m<sup>2</sup>

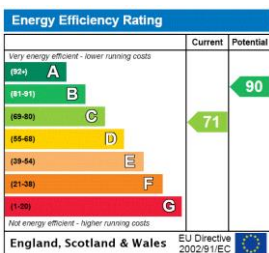
(1) Excluding balconies and terraces

While every attempt has been made to ensure accuracy, all measurements are approximate, not to scale. This floor plan is for illustrative purposes only.

Calculations were based on RICS IPMS 3C standard. Please note that calculations were adjusted by a third party and therefore may not comply with RICS IPMS 3C.

GIRAFFE360

This floorplan is for illustration purposes only and is not to scale. The position and size of doors, windows, appliances and other features are approximate.



**Tenure:** Freehold

**Council Tax Band:** D - Brent

Where no figures are shown, we have been unable to ascertain the information. All figures that are shown were correct at the time of printing.

Kingsbury | 020 8204 0000 | kingsbury@winkworth.co.uk



for every step...

winkworth.co.uk

Winkworth wishes to inform prospective buyers and tenants that these particulars are a guide and act as information only. All our details are given in good faith and believed to be correct at the time of printing but they don't form part of an offer or contract. No Winkworth employee has authority to make or give any representation or warranty in relation to this property. All fixtures and fittings, whether fitted or not are deemed removable by the vendor unless stated otherwise and room sizes are measured between internal wall surfaces, including furnishings.