



ADDISON ROAD, W14
£1,550,000 SHARE OF FREEHOLD

**A SPACIOUS THREE BEDROOM MAISONETTE SITUATED ON THE
GROUND AND FIRST FLOORS OF AN ATTRACTIVE END OF
TERRACE HOUSE.**

Kensington | 020 7727 1500 | kensington@winkworth.co.uk



for every step...

winkworth.co.uk



DESCRIPTION:

A spacious three bedroom maisonette situated on the ground and first floors of an attractive end of terrace house. The bright 28' first floor reception room has excellent ceiling height, wooden floors and three sets of full length French windows. The modern kitchen has a further set of French windows onto a balcony. The three double bedrooms are served by a shower room and a bathroom.

Addison Road is situated within the Royal Borough of Kensington & Chelsea and close to Kensington High Street with its many excellent shops, restaurants and transport facilities. The green open spaces of Holland Park are also within easy walking distance.

ACCOMODATION:

Entrance Hall | 28' Reception Room | Modern Kitchen | Three Double Bedrooms | Bathroom | Shower Room | Balcony

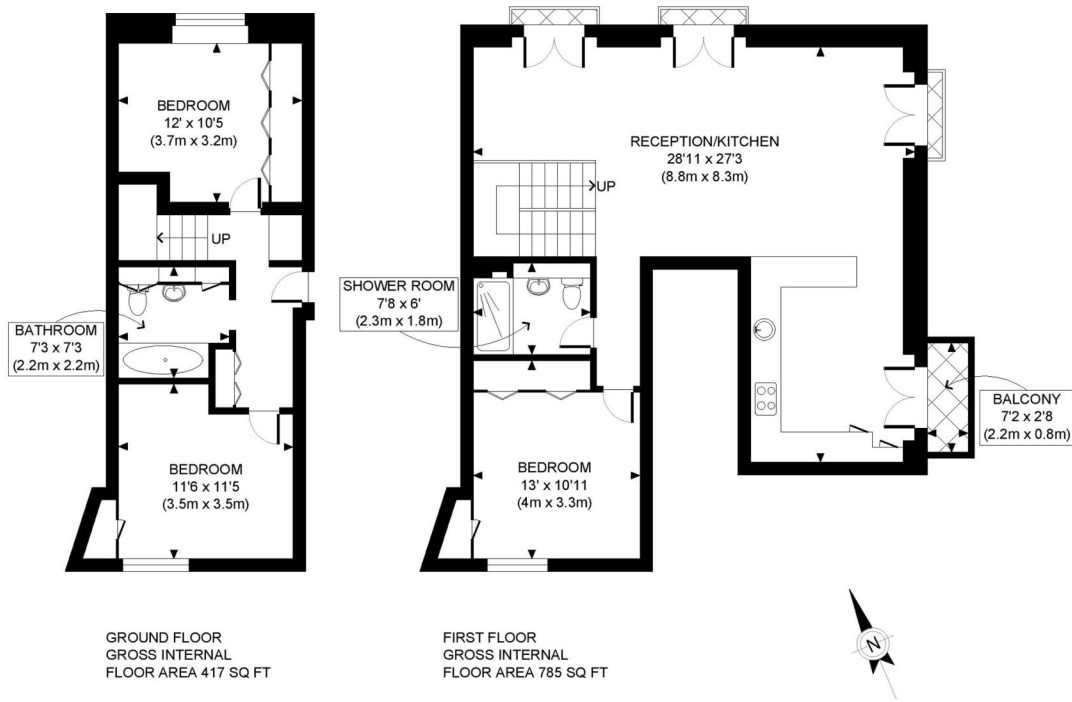
LOCAL AUTHORITY:

The Royal Borough of Kensington & Chelsea

NEAREST PUBLIC TRANSPORT:

Kensington Olympia
Holland Park
Kensington High Street

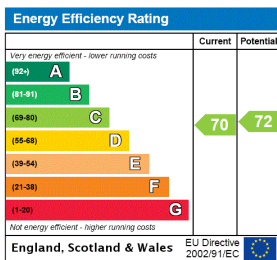




This plan is for illustrative purposes only and should be used as such by any prospective client. Whilst every attempt has been made to ensure the accuracy of the Floor Plan contained here, measurements of the doors, windows, rooms and any other items are approximate and no responsibility is taken for any errors, omissions, or misstatement. The services, systems and appliances shown have not been tested and no guarantee as to the operability or efficiency can be given.

PROPERTY PHOTO PLANS
ONE STOP SHOP FOR PROPERTY MARKETING

This floorplan is for illustration purposes only and is not to scale. The position and size of doors, windows, appliances and other features are approximate.



Lease: 999 years from 25 December 1975
Ground Rent: Peppercorn
Service Charge: TBC
Council tax band: G

Please note all figures are approximate

