



RAINHAM ROAD, LONDON, NW10
£1,365,000 FREEHOLD

A LOVELY FOUR BEDROOM FAMILY HOME IN A GREAT LOCATION IN KENSAL GREEN CLOSE TO TRANSPORT AND AMENITIES.

Kensal Rise & Queens Park | 0208 960 4947 | kensalrise@winkworth.co.uk

Winkworth

winkworth.co.uk

See things differently

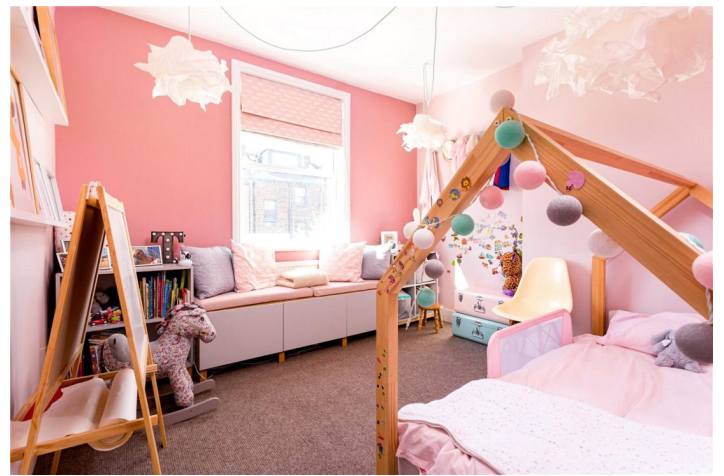


LOCATION:

Rainham Road ideally situated in the south of Kensal Green to take advantage of the Bakerloo line into town at Kensal Green Station which also has a branch of the London Overground service into Euston. For amenities and nights out then either Chamberlayne Road, College Road or even the 52 bus down to Notting Hill should satisfy all needs. There are excellent nursery and primary school options nearby and Queen's Park itself is less than a mile from the house.



Winkworth



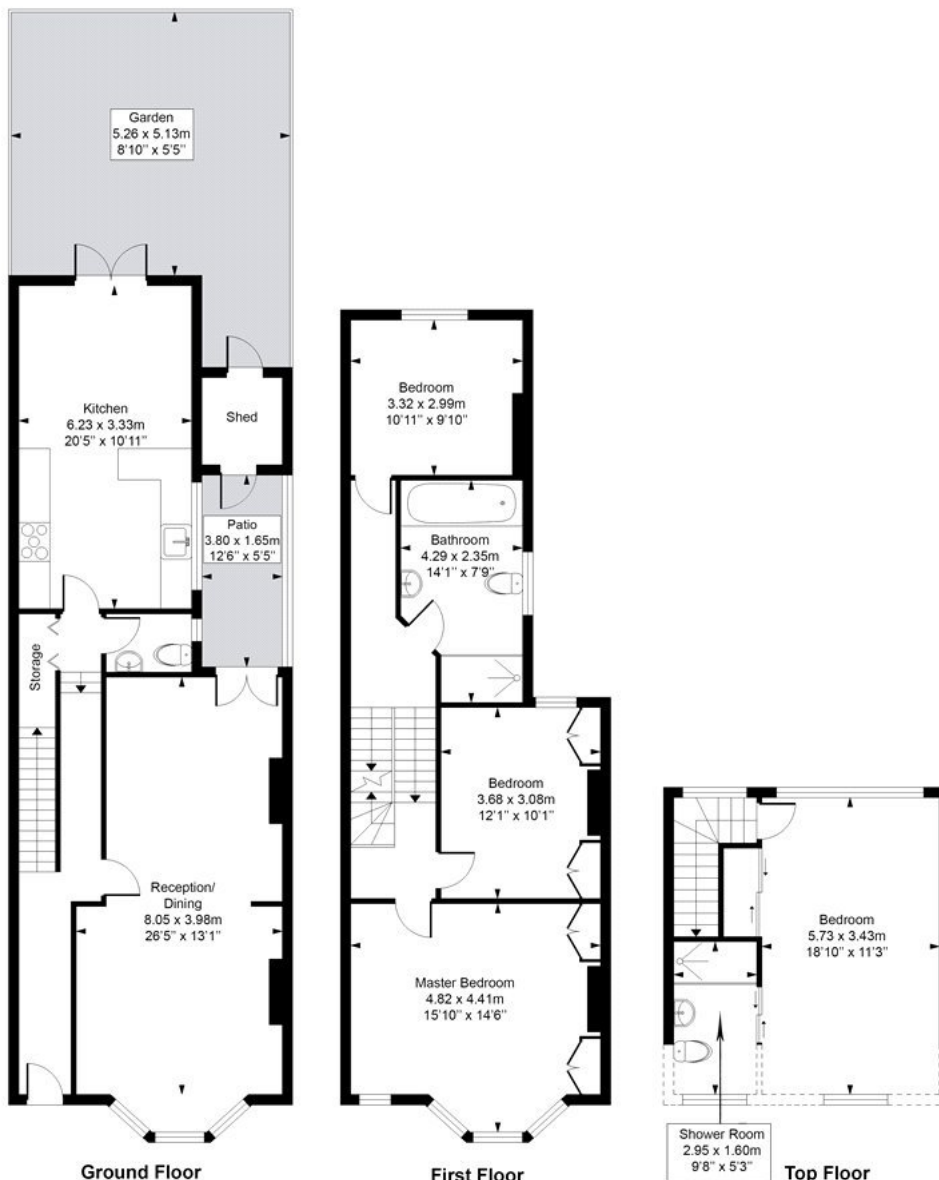
DESCRIPTION:

This beautiful family home measures 1821 sq.ft and has accommodation arranged over three floors including a very large loft conversion housing a double bedroom and en-suite shower room. On the first floor byers will find three further double rooms all serviced by a large family bathroom. Downstairs there's a double aspect reception room with feature fireplaces, a W.C and a kitchen diner to the rear. Further benefits include a private south facing garden, period features and no upper chain which should help to smooth the process.

Winkworth

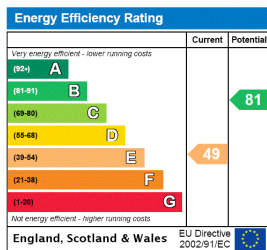
Rainham Road

Approximate Gross Internal Area = 169.1 Sq m / 1821 sq ft



Measured in accordance with RICS guidelines. Every attempt is made to ensure accuracy
 However all measurements are approximate.
 The floor plan is illustrative purposes only and is not to scale
 ELLIE CLAIRE PHOTOGRAPHY LTD
 www.elliclairephotography.com

This floorplan is for illustration purposes only and is not to scale. The position and size of doors, windows, appliances and other features are approximate.



Kensal Rise & Queens Park | 0208 960 4947 | kensalrise@winkworth.co.uk



winkworth.co.uk

See things differently

winkworth wishes to inform prospective buyers and tenants that these particulars are a guide and act as information only. All our details are given in good faith and believed to be correct at the time of printing but they don't form part of an offer or contract. No winkworth employee has authority to make or give any representation or warranty in relation to this property. All fixtures and fittings, whether fitted or not are deemed removable by the vendor unless stated otherwise and room sizes are measured between internal wall surfaces, including furnishings.