



Onslow Gardens, South Kensington, London, SW7

£1,495 per week* / £6,478.33 per month – Furnished

A beautifully styled two bedroom, two bathroom flat located on the top two floors (with lift) of this attractive period building.

2 Bedrooms | 1 Reception Room | Study Area | 2 Bathrooms | Cloakroom | Access to Communal Garden (by separate arrangement) | Third & Fourth Floor Flat | Lift | 1,209 Approx sq ft | EPC: D

APPLICANT FEES MAY BE APPLICABLE
HOLDING DEPOSIT OF 1 WEEK'S RENT
DEPOSIT OF 6 WEEKS' RENT

Winkworth

winkworth.co.uk

for every step...



DESCRIPTION

This stunning property is entered on the 3rd floor of the building, and features wonderful vaulted ceilings to the open-plan kitchen/reception room and an abundance of natural light.

The entire property has been refurbished to an exceptionally high standard and features two well-proportioned double bedrooms with ample built in storage, two bathrooms (one en-suite), separate guest cloakroom and spacious living area on the top floor.

The flat further benefits from access to communal gardens (by separate arrangement) and is available immediately on a furnished basis.

ACCOMMODATION

2 Bedrooms, 1 Reception Room, Study Area, 2 Bathrooms, Cloakroom, Access to Communal Garden (by separate arrangement), Third & Fourth Floor, Lift, Furnished, 1,209 Approx Sq ft

COUNCIL TAX BAND

Band H

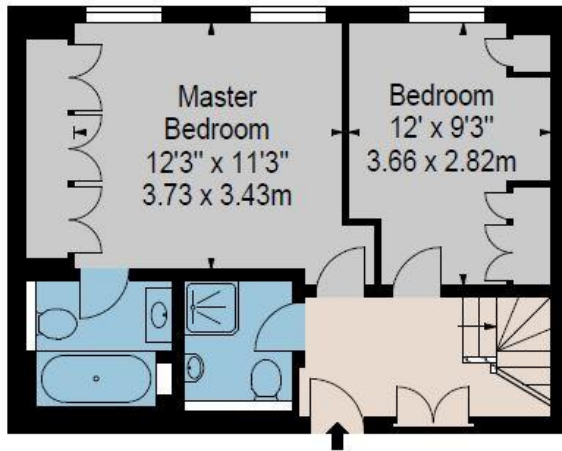


ONSLOW GARDENS SW7

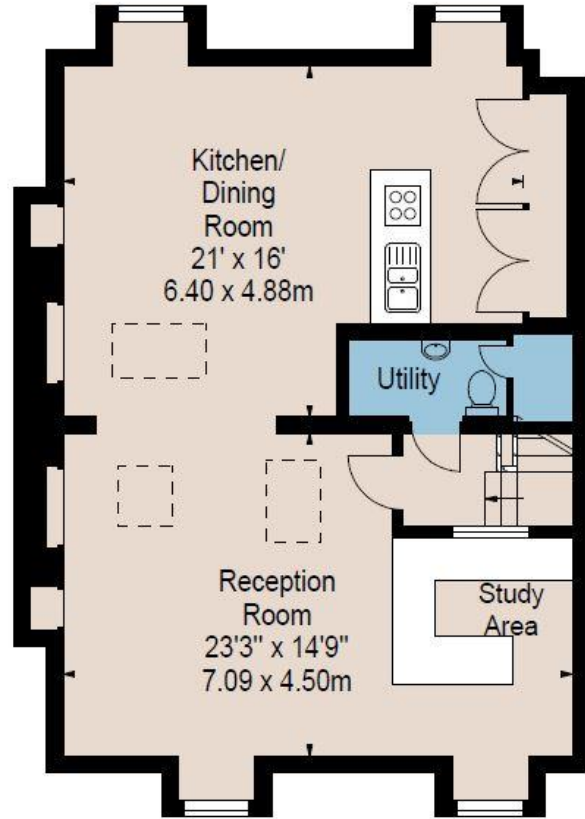
APPROX. GROSS INTERNAL AREA *
1209 Ft² - 112.32 M²

Illustration For Identification Only, Not to Scale
All Calculations include Any/All Areas Under 1.5m Head Height.

* As Defined by RICS - Code of Measuring Practice
(Measurements And Ft²/M² Calculation Supplied By Client)



THIRD FLOOR



FOURTH FLOOR



www.bkrfloorplans.co.uk

T: 0345 257 2023

© BKR 2019

Energy Efficiency Rating		
	Current	Potential
<i>Very energy efficient - lower running costs</i>		
(92+) A		
(81-91) B		
(69-80) C		
(55-68) D	59	67
(39-54) E		
(21-38) F		
(1-20) G		
<i>Not energy efficient - higher running costs</i>		
England, Scotland & Wales	EU Directive 2002/91/EC	

This floorplan is for illustration purposes only and is not to scale. The position and size of doors, windows, appliances and other features are approximate.

*please note, the rent cannot be paid on a weekly basis



South Kensington Lettings | 020 7370 6767 | lettings.southken@winkworth.co.uk

winkworth.co.uk

for every step...

Winkworth wishes to inform prospective buyers and tenants that these particulars are a guide and act as information only. All our details are given in good faith and believed to be correct at the time of printing but they don't form part of an offer or contract. No Winkworth employee has authority to make or give any representation or warranty in relation to this property. All fixtures and fittings, whether fitted or not are deemed removable by the vendor unless stated otherwise and room sizes are measured between internal wall surfaces, including furnishings.