



AVENUE HOUSE, LONDON, NW10
£2,250 PER MONTH UNFURNISHED

NEWLY RENOVATED APARTMENT AVAILABLE TO LET WITH ALLOCATED PARKING & COMMUNAL GARDENS

Kensal Rise & Queens Park | 0208 960 4947 | kensalrise@winkworth.co.uk

Winkworth

for every step...

winkworth.co.uk



DESCRIPTION:

Winkworth are delighted to offer this newly renovated apartment located on the third floor.

Comprises of a large eat-in kitchen diner with brand new appliances to include a dishwasher, cooker, hob, large fridge freezer, washing machine and even a new boiler.

The reception room is south west facing and is flooded with natural light, from here there are beautiful views over Elmwood Tennis court.

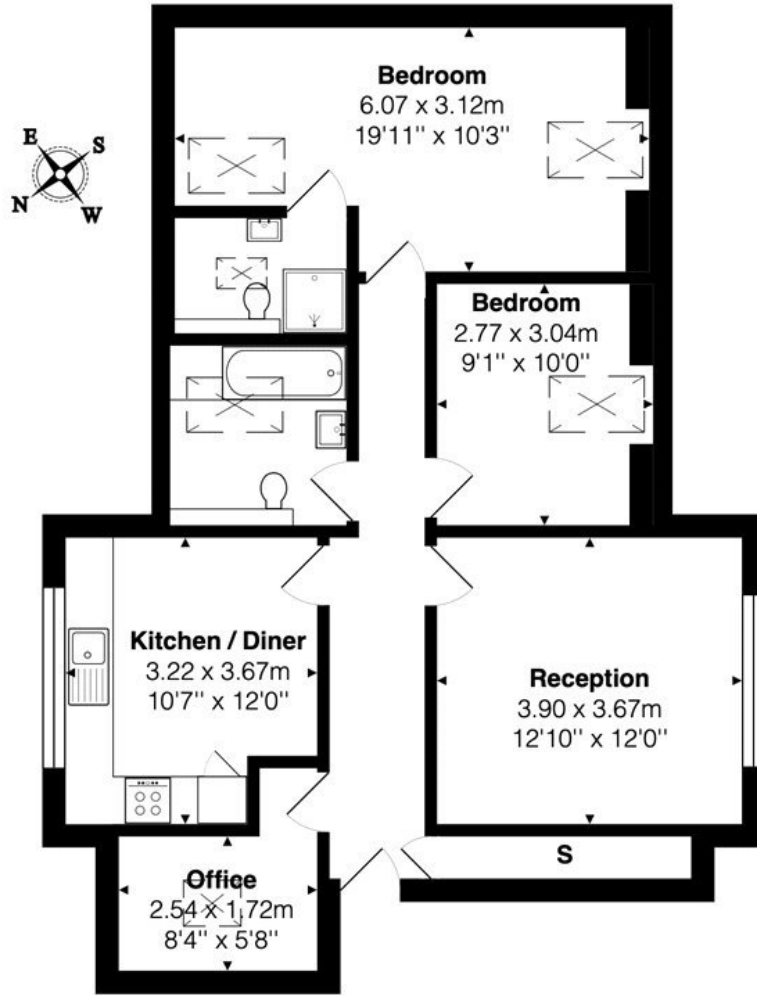
There are two good size double bedrooms, one with its own en-suite shower room as well as a third smaller room, perfect for a study or home office. In addition to the en-suite there is another bathroom with shower over bathtub and a heated towel rail.

The apartment benefits from hard wood flooring throughout, loft storage, additional storage accessible from the corridor, allocated off-street parking as well as communal gardens.

Offered unfurnished and available now, this property is certainly one not to miss.

Brent Council Tax Band - C





Top Floor

Total Area: 79.9 m² ... 860 ft²

All measurements are approximate and for display purposes only

This floorplan is for illustration purposes only and is not to scale. The position and size of doors, windows, appliances and other features are approximate.

Deposit: 5 weeks rent

Holding Deposit: 1 weeks rent

Council Tax Band: C

Where no figures are shown, we have been unable to ascertain the information. All figures that are shown were correct at the time of printing.

Energy Efficiency Rating		Current	Potential
Very energy efficient - lower running costs			
(92-100)	A		
(81-91)	B		
(69-80)	C		80
(55-68)	D	55	
(39-54)	E		
(21-38)	F		
(1-20)	G		
Not energy efficient - higher running costs			
England, Scotland & Wales		EU Directive 2002/91/EC	



Kensal Rise & Queens Park | 0208 960 4947 | kensalrise@winkworth.co.uk

for every step...

winkworth.co.uk

Winkworth wishes to inform prospective buyers and tenants that these particulars are a guide and act as information only. All our details are given in good faith and believed to be correct at the time of printing but they don't form part of an offer or contract. No Winkworth employee has authority to make or give any representation or warranty in relation to this property. All fixtures and fittings, whether fitted or not are deemed removable by the vendor unless stated otherwise and room sizes are measured between internal wall surfaces, including furnishings.