

MICAWBER COURT, WINDSOR TERRACE, LONDON, N1  
**£475,000 LEASEHOLD**

**A SIZABLE THREE BEDROOM SPLIT LEVEL  
FLAT WITH PRIVATE BALCONY.**

Islington | 0207 354 2480 | [islington@winkworth.co.uk](mailto:islington@winkworth.co.uk)

**Winkworth**

[winkworth.co.uk](http://winkworth.co.uk)

See things differently





## DESCRIPTION:

Set over the first and second floors is this fantastic three bedroom maisonette with private west-facing balcony. A brand new integrated kitchen is located to the front of the flat, whilst a generous living room is located to the rear which provides direct access to a private full length balcony. A separate WC is also positioned on this floor.

Upstairs you will find three bedrooms, two doubles and a smaller third bedroom which would make the perfect work from home space. alongside family bathroom and separate WC. The property is completed with a family sized bathroom benefits from generous storage space throughout and is offered to the market on a chain free basis.

Micawber Court is situated just off City road amongst the nest of recent award winning developments surrounding The Silicon roundabout.

Old Street station offers the closest underground links on the Northern line whilst Angel underground and the shops, bars and restaurants on Upper Street are also close by. A variety of bus routes are at hand for easy access across London and international links are facilitated from St Pancras.

**Winkworth**

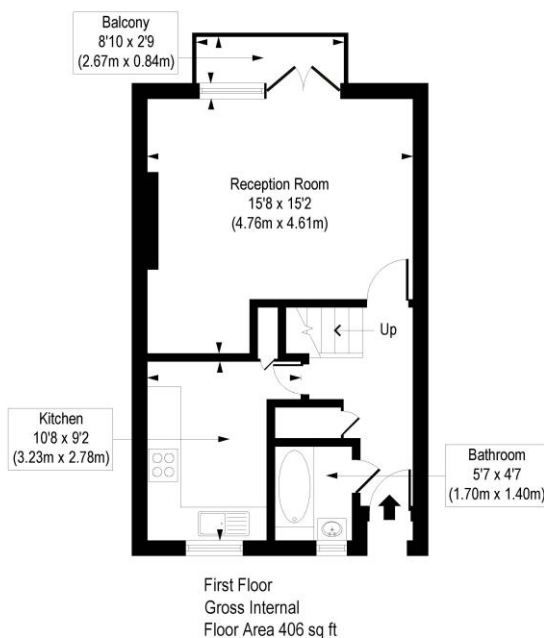
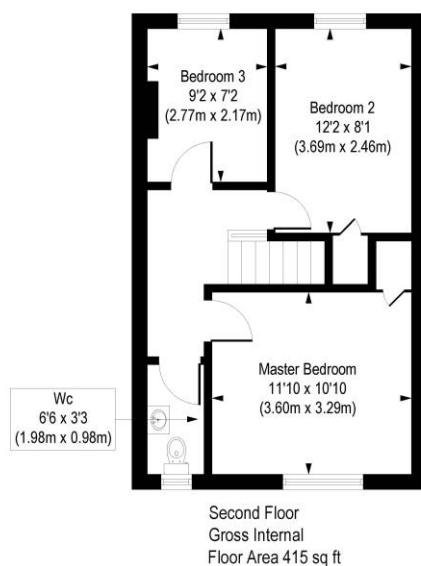




Winkworth

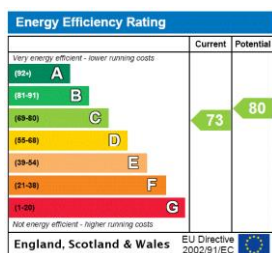
# Micawber Court, Windsor Terrace, N1

Approx. Gross Internal Floor Area 821 sq. ft / 76.25 sq. m



COMPLIANT WITH RICS CODE OF MEASURING PRACTICE. Floorplan is for illustrative purposes only and is not to scale. Every attempt has been made to ensure the accuracy of the floorplan shown, however all measurements, fixtures, fittings and data shown are an approximate interpretation for illustrative purposes only. Liability for errors, omissions or mis-statement through negligence or otherwise is hereby excluded.

This floorplan is for illustration purposes only and is not to scale. The position and size of doors, windows, appliances and other features are approximate.



Islington | 0207 354 2480 | [islington@winkworth.co.uk](mailto:islington@winkworth.co.uk)

**Winkworth**

[winkworth.co.uk](http://winkworth.co.uk)

See things differently

Winkworth wishes to inform prospective buyers and tenants that these particulars are a guide and act as information only. All our details are given in good faith and believed to be correct at the time of printing but they don't form part of an offer or contract. No Winkworth employee has authority to make or give any representation or warranty in relation to this property. All fixtures and fittings, whether fitted or not are deemed removable by the vendor unless stated otherwise and room sizes are measured between internal wall surfaces, including furnishings.