



## ST. GEORGE'S SQUARE, SW1V

£1,175,000

SHARE OF FREEHOLD

### At a glance...

- TWO DOUBLE BEDROOMS
- TWO BATHROOMS
- SPACIOUS RECEPTION
- ROOM WITH FEATURE FIREPLACE
- KITCHEN
- INTERNAL CONSERVATORY
- PRIVATE GARDEN

**Winkworth**

for every step...



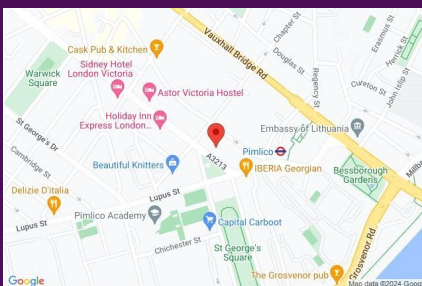
## ST. GEORGE'S SQUARE, SW1V

£1,175,000

SHARE OF FREEHOLD

Boasting over 1000 square feet and located less than two minutes' walk from Pimlico tube, the property is presented in exceptional condition and the quality of the finish is high throughout. The property comprises master bedroom and ensuite bathroom, second double bedroom with built in storage space, bathroom, spacious reception room, fully fitted modern kitchen and an internal conservatory (currently used as a study) which offers access to the private, decked patio garden. The property has the added benefit of two spacious internal vault rooms at the front of the building, which have been recently refurbished to provide an additional study area and utility room.

The convenient location of St Georges Square provides easy access to the local amenities, shops and restaurants of Lupus Street, Claverton Street, the Vauxhall Bridge Road and the Moreton Triangle. Victoria, Westminster, the West End and the centre of Belgravia are all within reach of the property whilst the locality offers a short walk to the River Thames and the public green space of St Georges Square itself.

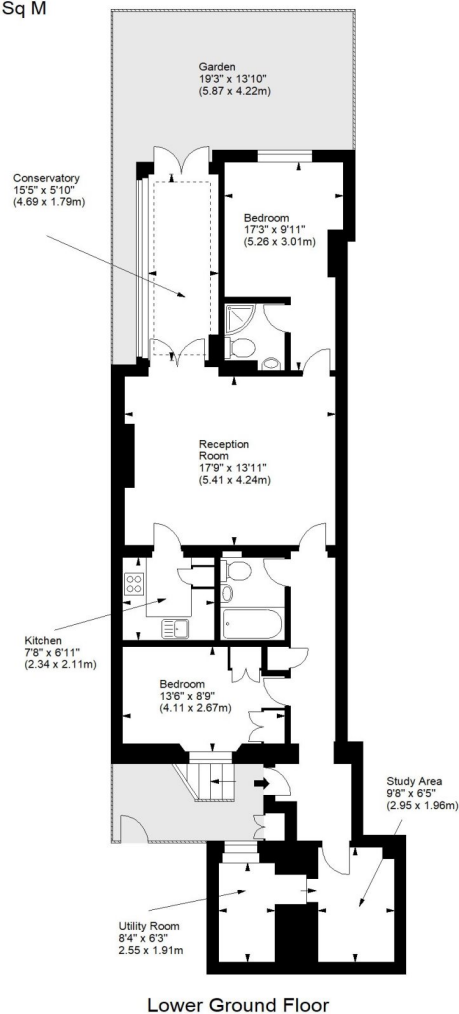


Winkworth wishes to inform prospective buyers and tenants that these particulars are a guide and act as information only. All our details are given in good faith and believed to be correct at the time of printing but they don't form part of an offer or contract. No Winkworth employee has authority to make or give any representation or warranty in relation to this property. All fixtures and fittings, whether fitted or not are deemed removable by the vendor unless stated otherwise and room sizes are measured between internal wall

## St. George's Square, SW1



Approx. Gross Internal Area  
1050 Sq Ft - 97.55 Sq M



For illustration purposes only. Not to scale.

Pimlico & Westminster

020 7828 1786

pimlico@winkworth.co.uk

**Winkworth**

for every step...

winkworth.co.uk/pimlico-westminster