



**TAMAR HOUSE, READING, BERKSHIRE, RG1 1LG**  
**£1,695 PER MONTH FURNISHED**

**LUXURY TWO BEDROOM PENTHOUSE APARTMENT  
LOCATED ON THE FIFTH FLOOR OF TAMAR HOUSE IN THE  
HEART OF READING TOWN CENTRE**

Reading | 0118 4022 300 | [reading@winkworth.co.uk](mailto:reading@winkworth.co.uk)

**Winkworth**

for every step...

[winkworth.co.uk](http://winkworth.co.uk)





## DESCRIPTION:

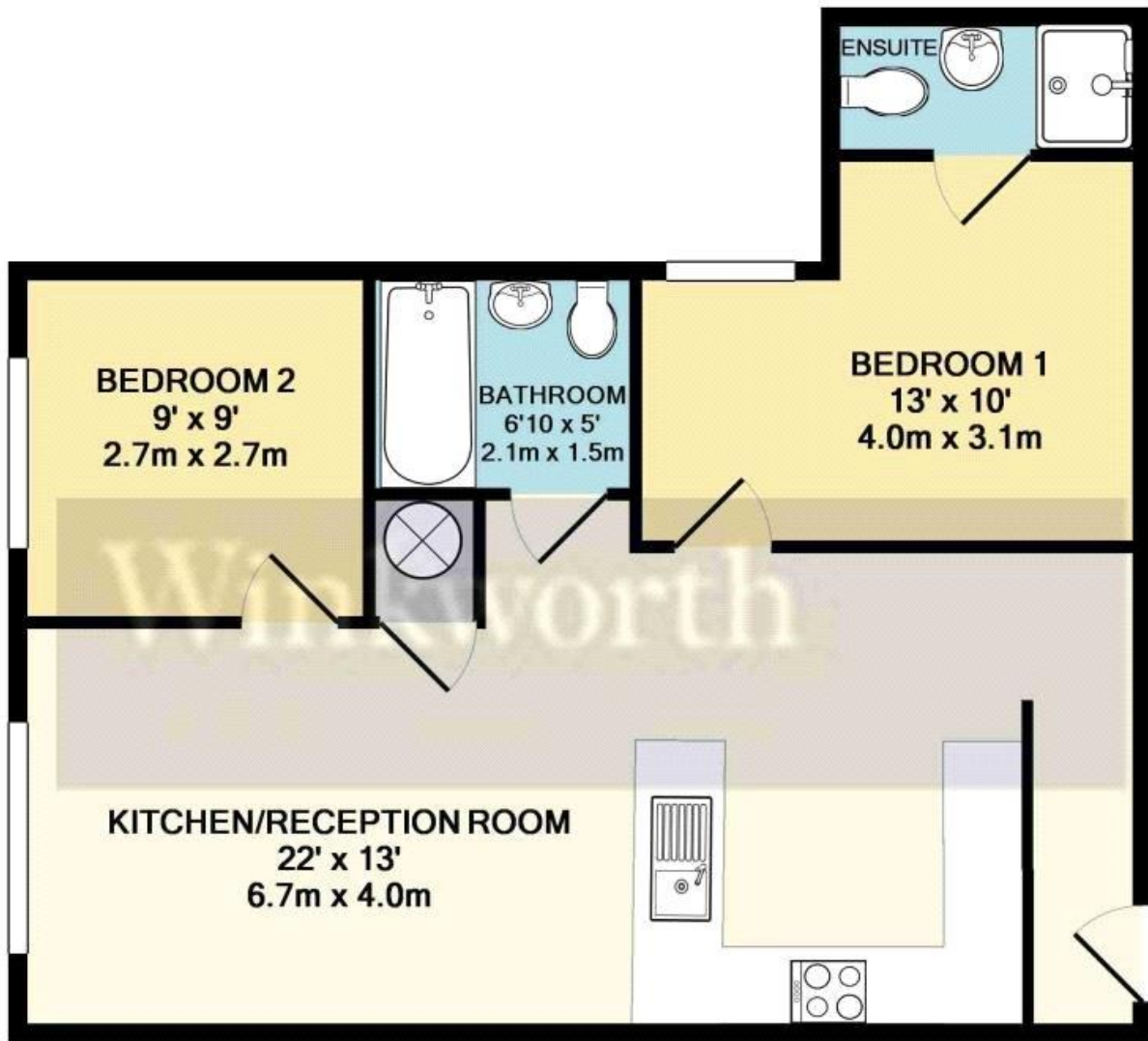
Luxury two bedroom penthouse apartment located on the fifth floor of Tamar House in the heart of Reading town centre, a short walk from Reading train station. The property comprises a spacious living room with open plan kitchen benefitting from integrated appliances, two double bedrooms with an en suite shower room to the master bedroom and a modern three piece bathroom. Benefits also include bike storage and lift access. (No parking) Available 30th August 2024. Furnished to a high standard.

## AT A GLANCE

- Close to Reading train station
- Luxury penthouse apartment
- Two double bedrooms
- Two bathrooms
- Council tax band C
- Available 30th August
- Furnished to a high standard







This floorplan is for illustration purposes only and is not to scale. The position and size of doors, windows, appliances and other features are approximate.

**Deposit:** £1,955.77

**Holding Deposit:** £391.15

**Council Tax Band:** C

Where no figures are shown, we have been unable to ascertain the information. All figures that are shown were correct at the time of printing.

Energy Efficiency Rating		Current	Potential
Very energy efficient - lower running costs			
(92-100)	A		
(81-91)	B		
(69-80)	C	70	70
(55-68)	D		
(39-54)	E		
(21-38)	F		
(1-20)	G		
Not energy efficient - higher running costs			
England, Scotland & Wales		EU Directive 2002/91/EC	

Reading | 0118 4022 300 | [reading@winkworth.co.uk](mailto:reading@winkworth.co.uk)



for every step...

[winkworth.co.uk](http://winkworth.co.uk)

Winkworth wishes to inform prospective buyers and tenants that these particulars are a guide and act as information only. All our details are given in good faith and believed to be correct at the time of printing but they don't form part of an offer or contract. No Winkworth employee has authority to make or give any representation or warranty in relation to this property. All fixtures and fittings, whether fitted or not are deemed removable by the vendor unless stated otherwise and room sizes are measured between internal wall surfaces, including furnishings.