



KINGSMILL TERRACE, LONDON, NW8 £700,000 LEASEHOLD

A delightful one-bedroom apartment with fantastic natural light throughout, located on the third-floor of this popular portered building (with lift). Kingsmill Terrace is ideally situated within 30 metres of the newly landscaped St John's Wood High Street, with its rich selection of cafes, restaurants and boutique shopping facilities, not to mention St John's Wood Underground Station (Jubilee line) just under 150 metres away. Both Regent's Park and Primrose Hill are less than one mile away.

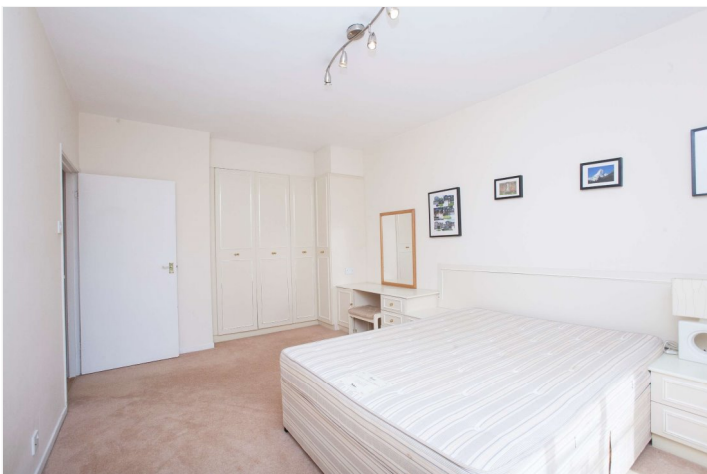
Please note the property is currently tenanted until January 2025 and therefore immediate vacant possession may not be available

Double Bedroom | Bathroom | Separate WC | Reception Room | Kitchen | Communal Heating | Communal Hot Water | Passenger Lift | Entrance Phone | Leasehold

Winkworth

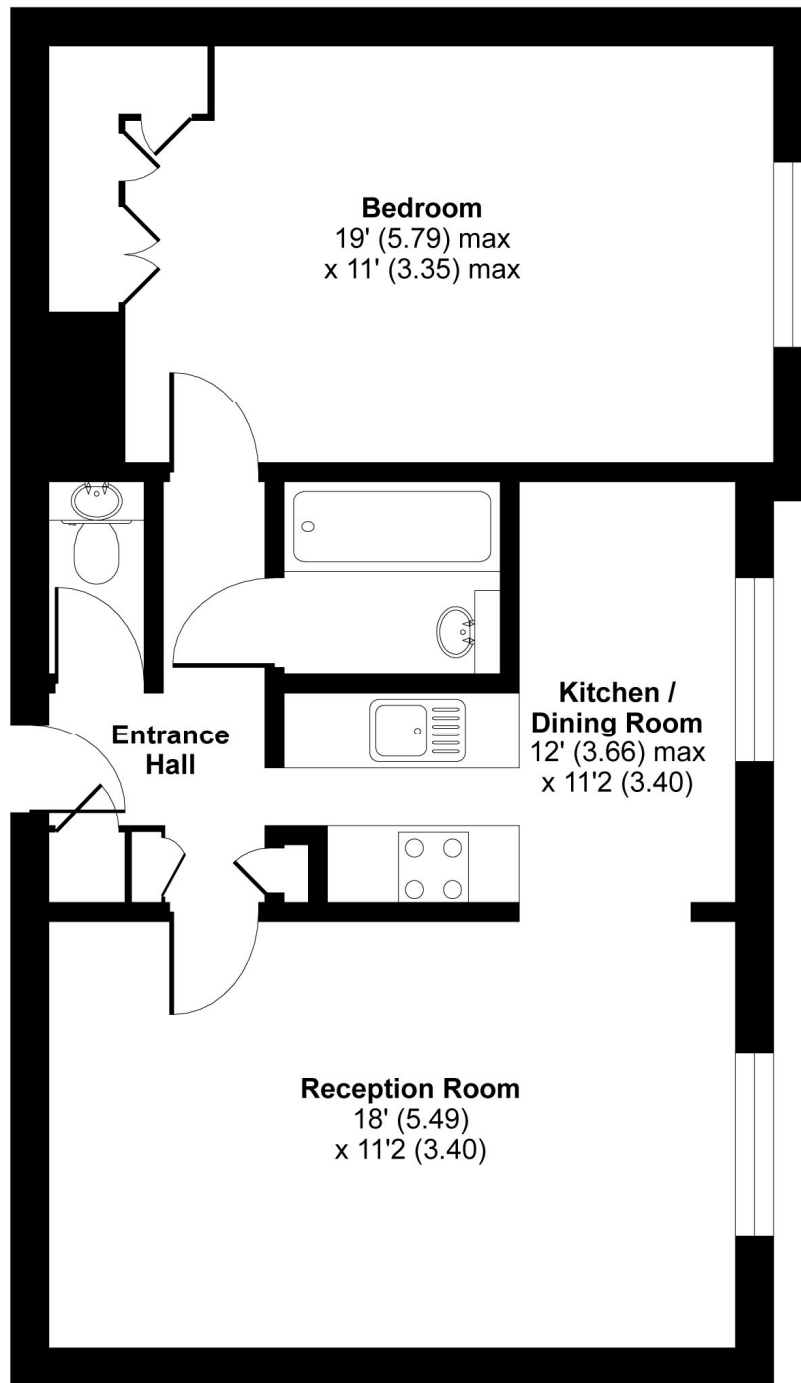
for every step...

winkworth.co.uk/st-johns-wood



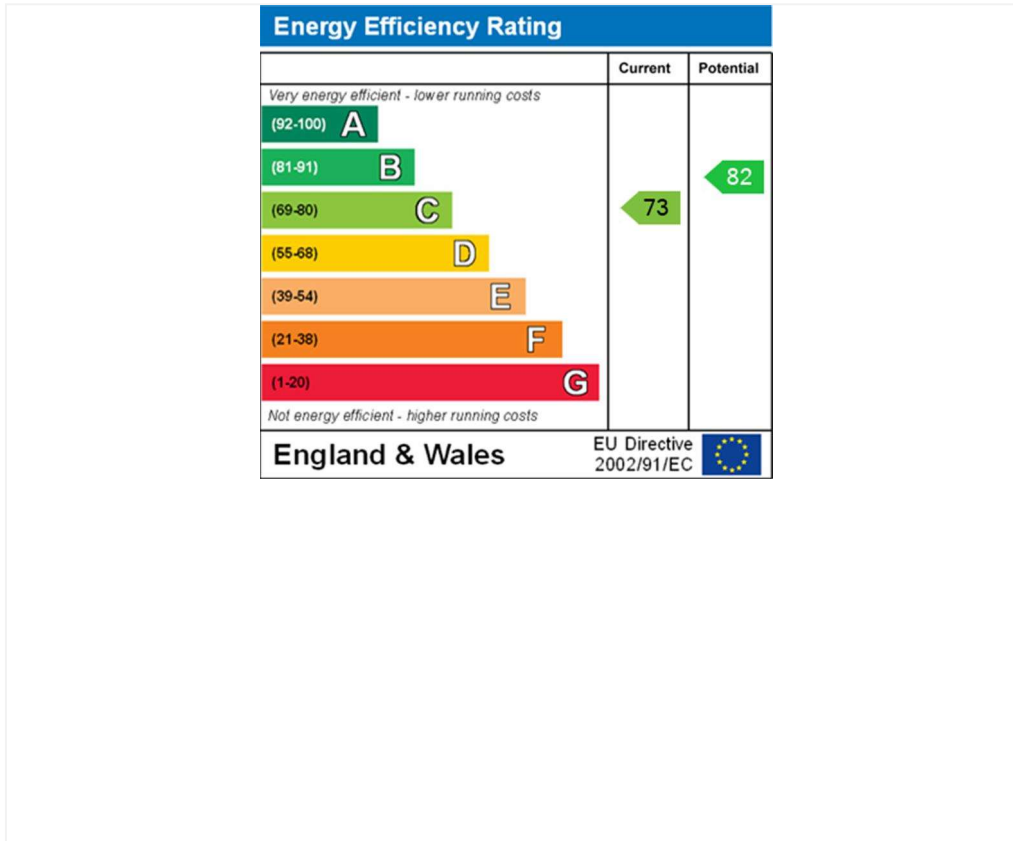
Kingsmill Terrace, London, NW8

APPROX. GROSS INTERNAL FLOOR AREA 626 SQ FT 58.1 SQ METRES



THIRD FLOOR

Whilst every attempt has been made to ensure the accuracy of the floor plan contained here, measurements of doors, windows and rooms are approximate and no responsibility is taken for any error, omission or misstatement. These plans are for representation purposes only as defined by RICS Code of Measuring Practice and should be used as such by any prospective purchaser. Specifically no guarantee is given on the total square footage of the property if quoted on this plan. Any figure given is for initial guidance only and should not be relied on as a basis of valuation.



Tenure: Leasehold

Term: Expires - 01/01/3006

Service Charge: £4,650.54 per annum

Ground Rent: £0 Annually (subject to increase)

Council Tax Band: E

Where no figures are shown, we have been unable to ascertain the information. All figures that are shown were correct at the time of printing.

Where no figures are shown, we have been unable to ascertain the information. All figures that are shown were correct at the time of printing. These particulars are not an offer or contract, nor part of one. You should not rely on statements by Winkworth in the particulars or by word of mouth or in writing "information" as being factually accurate about the property, its condition or its value. Winkworth does not have any authority to make any representations about the property, and accordingly any information given is entirely without responsibility on the part of the agents, seller(s) or lessor(s). These particulars are prepared on the basis of the information supplied by our client and are a rough guide for information only. The photographs show only certain parts of the property. We are not able to check all of the information and therefore are unable to guarantee accuracy. All interested parties are therefore advised to undertake all necessary inspections and checks that they deem appropriate. Where displayed, the square footage is taken from the floor plans, which are created by an independent supplier. These measurements are approximate and included for illustrative purposes only. The measurements may vary. Winkworth does not make any representation as to the accuracy of these measurements and you should seek to verify them for yourself. Winkworth accept no liability for any loss you may suffer if you rely on these measurements. All fixtures and fittings, whether fitted or not are deemed removable by the vendor unless stated. Any reference to alterations to, or use of, any part of the property does not mean that any necessary planning, building regulations or other consent has been obtained. Amenities and appliances have not been tested

St John's Wood | 103-104 St. Johns Wood Terrace, London, NW8 6PL | 020 7586 7001 |



for every step...

winkworth.co.uk/st-johns-wood

Winkworth wishes to inform prospective buyers and tenants that these particulars are a guide and act as information only. All our details are given in good faith and believed to be correct at the time of printing but they don't form part of an offer or contract. No Winkworth employee has authority to make or give any representation or warranty in relation to this property. All fixtures and fittings, whether fitted or not are deemed removable by the vendor unless stated otherwise and room sizes are measured between internal wall surfaces, including furnishings.