



**FARLEY LODGE, BENTLEY WOODS, FARLEY, SALISBURY, WILTSHIRE, SP5 1AQ
£2,500 PER MONTH (£576.92 PER WEEK) FIVE WEEK DEPOSIT @ £2884.62
UNFURNISHED/PART FURNISHED/ FURNISHED.**

A STYLISH 3 BEDROOM LODGE COTTAGE WITH A WELL-APPOINTED 1 BEDROOM ANNEXE IN A RURAL, WOODLAND SETTING

Salisbury | 01722 443 000 | salisbury@winkworth.co.uk

Winkworth

for every step...

winkworth.co.uk



Farley Lodge, Bentley Woods is a well-presented, 3-bedroom, single storey property with well-planned accommodation and some lovely rural outlooks. The living space is as per the indicative floor plans and 3D Matterport tour. Of particular note is the 1-bedroom annexe, perfect for visiting guests or as a work from home office space. There is a garden around the property, a double car barn and driveway parking. The annexe has its own area of garden, within which is an outbuilding, divided into a shed and a kennel. Available immediately on an unfurnished/ part furnished or furnished basis. £2,500 per calendar month (£576.92 per week) plus bills (e.g., + Wiltshire Council Tax Band E, heating oil (tank in the annexe garden), electricity, broadband etc). Private drainage and water supply. **Agents note:** the woodland track to the property is unmade and shared by horses and cyclists, mobile reception is patchy.



Winkworth

for every step...

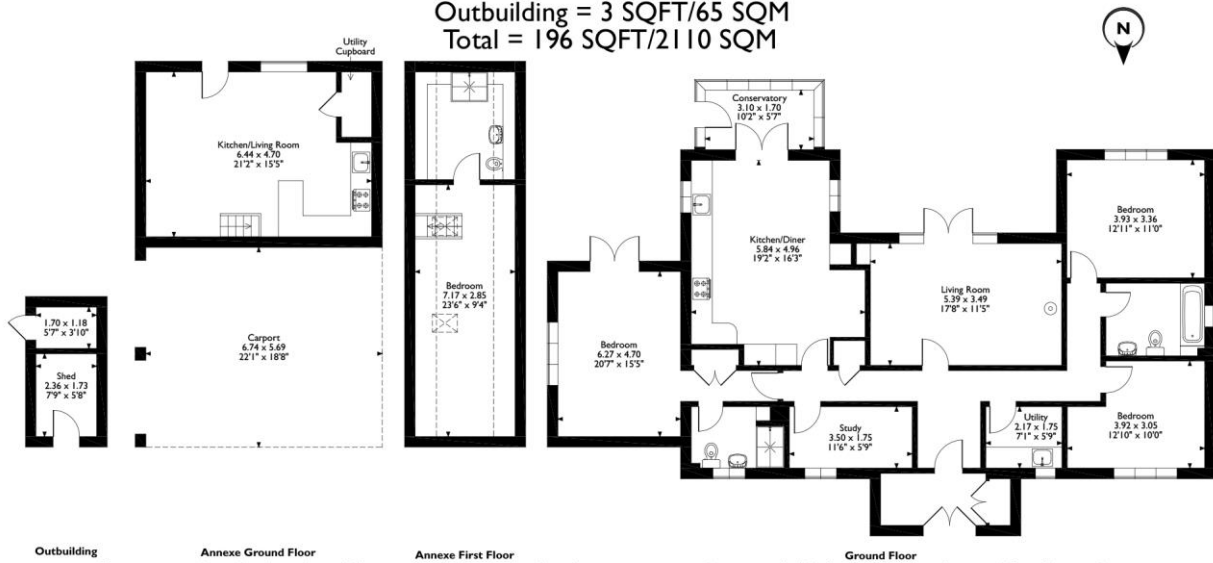


Winkworth

for every step...

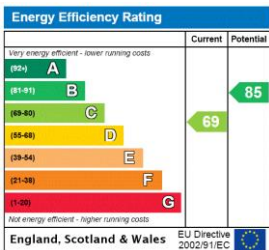
Farley Lodge, Bentley Woods, Farley, Salisbury, Wiltshire, SP5 1AQ

Approximate Gross Internal Area
 Main House = 143 SQFT/1539 SQM
 Annexe = 47 SQFT/506 SQM
 Outbuilding = 3 SQFT/65 SQM
 Total = 196 SQFT/2110 SQM



Please note that the location of doors, windows and other items are approximate and this floorplan is to be used for illustrative purposes only. Unauthorized reproduction is prohibited.

This floorplan is for illustration purposes only and is not to scale. The position and size of doors, windows, appliances and other features are approximate.



Salisbury | 01722 443 000 | salisbury@winkworth.co.uk



for every step...

winkworth.co.uk

Winkworth wishes to inform prospective buyers and tenants that these particulars are a guide and act as information only. All our details are given in good faith and believed to be correct at the time of printing but they don't form part of an offer or contract. No Winkworth employee has authority to make or give any representation or warranty in relation to this property. All fixtures and fittings, whether fitted or not are deemed removable by the vendor unless stated otherwise and room sizes are measured between internal wall surfaces, including furnishings.