



MULLEN TOWERS, MOUNT PLEASANT, LONDON, WC1X
£495,000 LEASEHOLD

**A MODERN AND IMMACULATELY PRESENTED ONE
BEDROOM APARTMENT AVAILABLE IN A MUCH
SOUGHT AFTER LOCATION JUST OFF ROSEBERY
AVENUE.**

Clerkenwell & City | 020 7405 1288 | clerkenwell@winkworth.co.uk

Winkworth

for every step...

winkworth.co.uk



DESCRIPTION:

The property comprises of a large bedroom, a large open plan kitchen / Reception and a good size bathroom. Situated on the 11th floor, the property offers amazing views over London's famous skyline. Mullen Tower is located in the heart of Clerkenwell only a few minutes' walk from Farringdon Underground station with its easy access into the City and West End and the multitude of shops and amenities of vibrant Exmouth Market.



Winkworth

for every step...

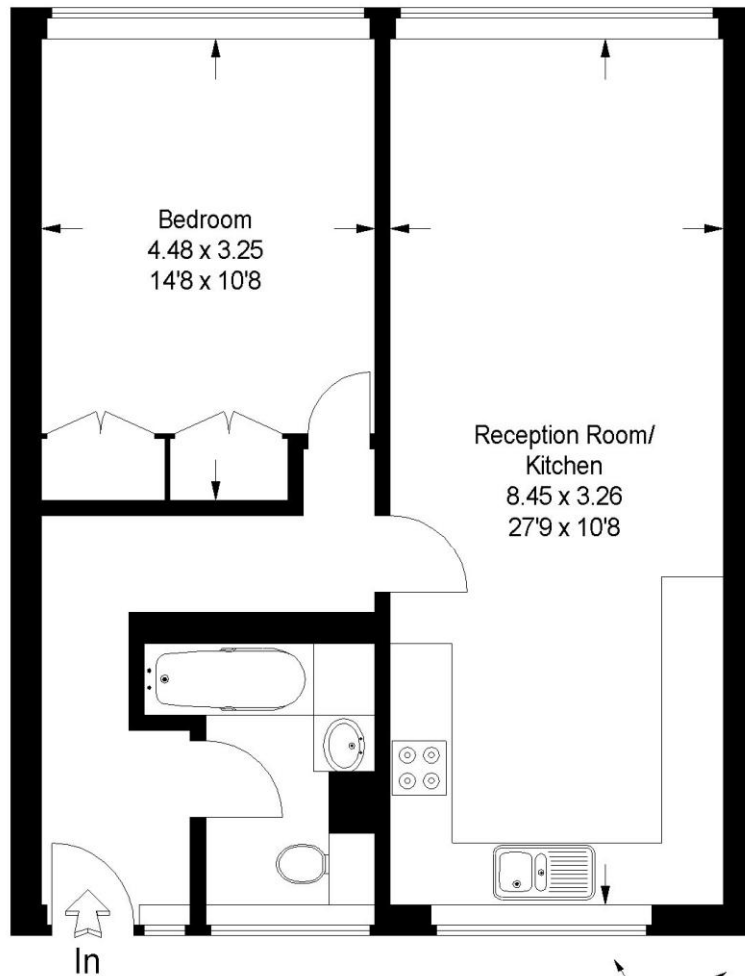


Winkworth

for every step...

Mullen Tower, Mount Pleasant, WC1X

Approximate Gross Internal Area :- 56 sq m / 603 sq ft



Eleventh Floor

FLOORPLANZ © 2008
01483 755510 Ref 44735

This illustration is for identification purposes only. Measured & drawn in accordance with RICS guidelines. Not drawn to scale, unless stated. Dimensions shown are to the nearest 7.5 cm / 3" and are through cupboard / wardrobes to wall surfaces where possible or where indicated by arrow heads. Whilst every care is taken in the preparation of this plan, please check all dimensions shapes & compass bearings before making any decisions reliant upon them.

This floorplan is for illustration purposes only and is not to scale. The position and size of doors, windows, appliances and other features are approximate.

Energy Efficiency Rating	
	Potential
Very energy efficient - lower running costs	
(92-100) A	
(81-91) B	
(69-80) C	
(55-68) D	66
(39-54) E	
(21-38) F	
(1-20) G	
Not energy efficient - higher running costs	
England, Scotland & Wales	75
EU Directive 2002/91/EC	

Tenure: Leasehold

Term: 100 year and 0 months

Service Charge: Approx. £2,600 per annum

Ground Rent: Approx. £10 Annually (subject to increase)

Council Tax Band: D

Where no figures are shown, we have been unable to ascertain the information. All figures that are shown were correct at the time of printing.

Clerkenwell & City | 020 7405 1288 | clerkenwell@winkworth.co.uk

Winkworth

for every step...

winkworth.co.uk

Winkworth wishes to inform prospective buyers and tenants that these particulars are a guide and act as information only. All our details are given in good faith and believed to be correct at the time of printing but they don't form part of an offer or contract. No Winkworth employee has authority to make or give any representation or warranty in relation to this property. All fixtures and fittings, whether fitted or not are deemed removable by the vendor unless stated otherwise and room sizes are measured between internal wall surfaces, including furnishings.