



TRING AVENUE, EALING, LONDON, W5
£1,150,000 FREEHOLD

EPC: D
Council Tax Band: G

Ealing & Acton | 0208 896 0123 | ealing@winkworth.co.uk

Winkworth

for every step...

winkworth.co.uk



DESCRIPTION:

This spacious five-bedroom semi-detached freehold property offers over 1,500 square feet of potential and is in need of updating. The ground floor includes two large reception rooms, a separate kitchen, and a cloakroom. The first floor features two large bedrooms, two smaller well-appointed rooms, and a family bathroom. The second floor offers the final bedroom with ample loft/storage space. Located just a short walk from Ealing Common and only a few minutes further to Acton Town, this property provides a great opportunity for those looking to create their ideal family home in a prime location.



Winkworth

for every step...



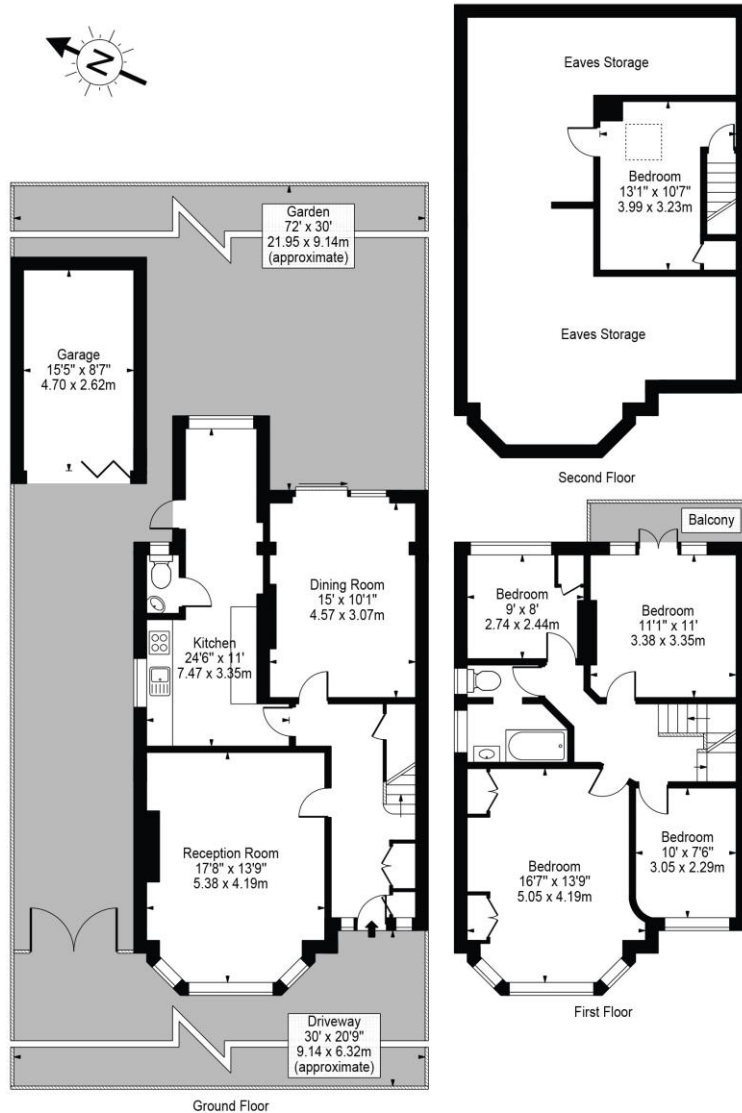
Winkworth

for every step...

Tring Avenue, W5

Approx. Gross Internal Area 1515 Sq Ft - 140.75 Sq M
(Excluding Eaves Storage & Garage)

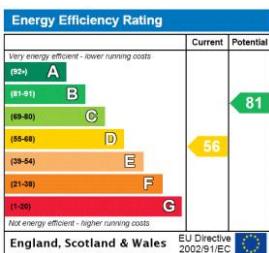
Approx. Gross Internal Area Of Garage 132 Sq Ft - 12.31 Sq M



For Illustration Purposes Only - Not To Scale Floor Plan by Mira Nikolova Photography

This floor plan should be used as a general outline for guidance only and does not constitute in whole or in part an offer or contract. Any intending purchaser or lessee should satisfy themselves by inspection, searches, enquiries and full survey as to the correctness of each statement. Any areas, measurements or distances quoted are approximate and should not be used to value a property or be the basis of any sale or let.

This floorplan is for illustration purposes only and is not to scale. The position and size of doors, windows, appliances and other features are approximate.



Tenure: Freehold

Term: N/A

Service Charge: N/A

Ground Rent: N/A

Council Tax Band: G

Where no figures are shown, we have been unable to ascertain the information. All figures that are shown were correct at the time of printing.

Ealing & Acton | 0208 896 0123 | ealing@winkworth.co.uk

Winkworth

for every step...

winkworth.co.uk

Winkworth wishes to inform prospective buyers and tenants that these particulars are a guide and act as information only. All our details are given in good faith and believed to be correct at the time of printing but they don't form part of an offer or contract. No Winkworth employee has authority to make or give any representation or warranty in relation to this property. All fixtures and fittings, whether fitted or not are deemed removable by the vendor unless stated otherwise and room sizes are measured between internal wall surfaces, including furnishings.