



MAY COURT, FOUNTAYNE ROAD, LONDON, N16
£650,000 SHARE OF FREEHOLD

A BRIGHT AND RECENTLY REFURBISHED THREE BEDROOM APARTMENT WITH SHARE OF FREEHOLD

Stoke Newington | | stokenewington@winkworth.co.uk

Winkworth

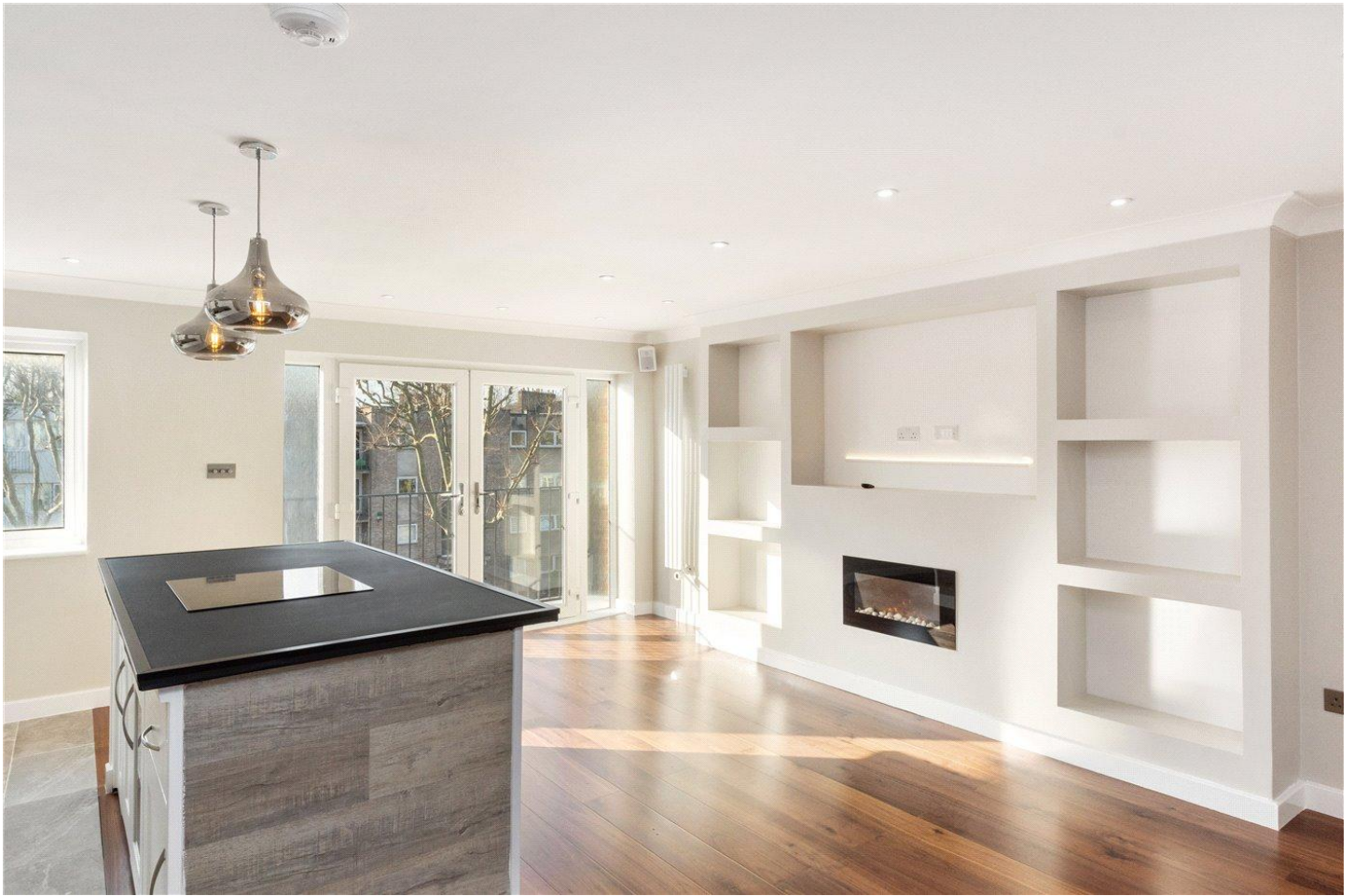


DESCRIPTION:

Located in the sought after Fountayne Road, this beautifully renovated three-bedroom apartment in Stoke Newington offers a quiet but convenient location. Positioned on the third floor the property features an open-plan kitchen and living area, ideal for social gatherings and daily activities. The kitchen is equipped with integrated Bosch appliances, while the Juliet balcony welcomes plenty of natural light and fresh air. The property also comprises a larger main bedroom and two single rooms, all benefitting from their own CAT6 internet connectivity. Adjoining the bedrooms is an exquisitely finished three piece bathroom.

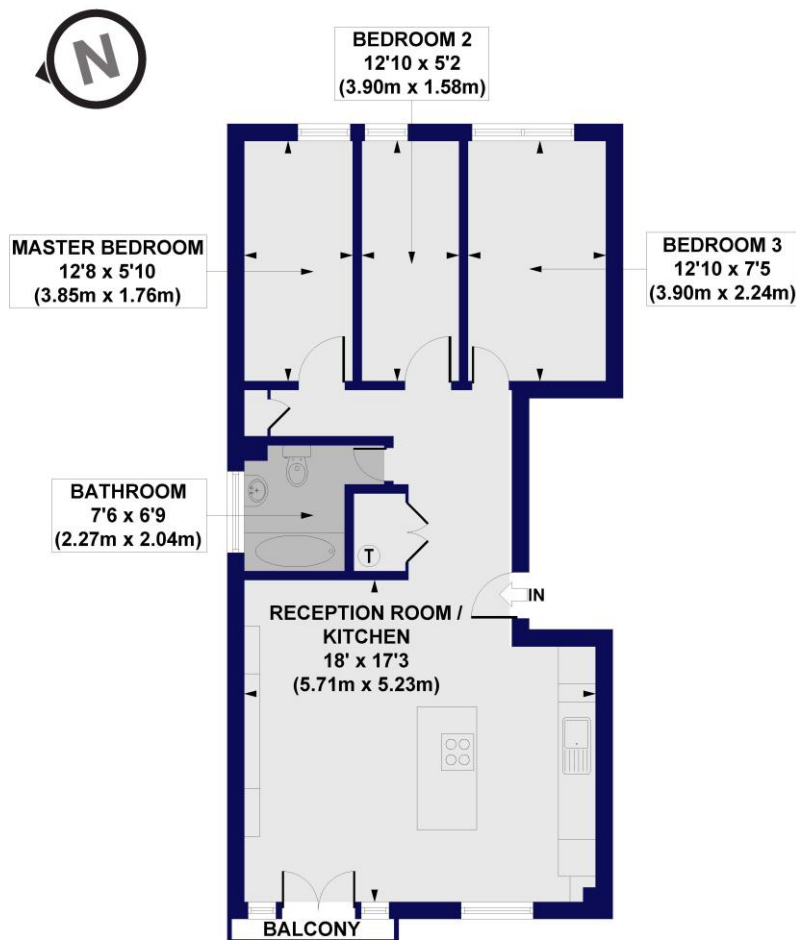
Stoke Newington is celebrated for its diverse array of independent boutiques, cafes, and dining establishments, which contribute to a vibrant community atmosphere that locals value. The neighbourhood benefits from outstanding transport connections, ensuring that commuting to various areas of London is quick and easy. Furthermore, its proximity to parks and vital amenities make it the perfect option for both families and professionals. Benefits of the property include designated resident's parking, share of the freehold and a chain free sale.

Winkworth



Winkworth

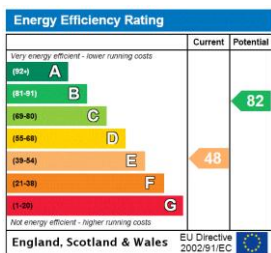
May Court, Fountayne Road, N16
 Approx. Gross Internal Floor Area 704 sq. ft / 65.42 sq. m



All measurements of walls, doors, windows, fittings and appliances, including their size and location, are shown as standard sizes and do not constitute any warranty or representation by the seller, their agent or CP Creative. Any intending purchaser must satisfy himself by inspection or otherwise as to the correctness of the information contained in these plans. This plan is for illustrative purposes only and should be used as such by any prospective purchasers.

Winkworth

This floorplan is for illustration purposes only and is not to scale. The position and size of doors, windows, appliances and other features are approximate.



Stoke Newington | | stokenewington@winkworth.co.uk



winkworth.co.uk

See things differently

Winkworth wishes to inform prospective buyers and tenants that these particulars are a guide and act as information only. All our details are given in good faith and believed to be correct at the time of printing but they don't form part of an offer or contract. No Winkworth employee has authority to make or give any representation or warranty in relation to this property. All fixtures and fittings, whether fitted or not are deemed removable by the vendor unless stated otherwise and room sizes are measured between internal wall surfaces, including furnishings.