



New North Road, Exeter, EX4 4JH

£200,000

Beautifully presented two-bedroom ground floor apartment, offering contemporary living in a prime location. Perfect for first-time buyers, professionals, or investors, this stylish home combines modern design with convenience.

Winkworth

Winkworth.co.uk

Crediton: 01363 773757
crediton@winkworth.co.uk

Exeter: 01392 271177
exeter@winkworth.co.uk

Tiverton: 01884 675 675
tiverton@winkworth.co.uk



Description....

A spacious ground floor flat located within Constantine House which is only a short walk to Exeter's High Street. The flat benefits from two good-sized double bedrooms, bathroom, and living area with French doors giving direct access onto the communal gardens. The flat has an allocated parking space within the gated car park allowing off-road parking.

Accommodation:

The apartment is situated on the ground floor.

The front door of the flat opens into an entrance hallway with two good sized built-in storage cupboards, doors leading to the main rooms.

The large, living area boasts French doors giving direct access onto the well tended communal gardens.

The modern kitchen contains a range of matching wall and base units with fitted worktops. Stainless steel sink with mixer tap over. Integrated appliances include an electric oven with hob and extractor hood over, room for washing machine.

There are two double bedrooms with the master enjoying a built-in wardrobe. Window with views over the gardens.

The main bathroom features a wash basin with mixer tap, a low level WC and panelled bath with shower over, glass screen, heated towel rail.

Gardens & Parking:

The property has the use of a gated communal garden which incorporates various sections of lawn and patio areas. The flat also boasts an allocated parking space within the secure gated carpark below the block.

Property Information:

Leasehold:

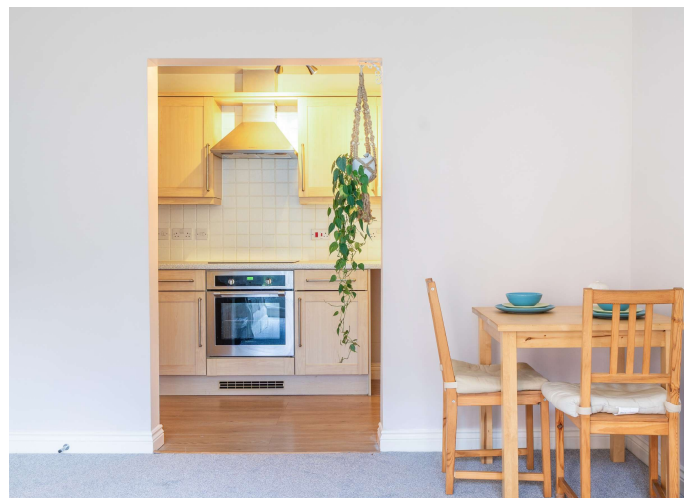
Service charge £220.83 pcm

Ground Rent £238.92 pa

Term for which the Property is leased: 125 years from and including 1 January 2005

Broadband: Ultrafast 1800 Mbps 1000 Mbps is available.

Mobile: You are likely to get good coverage.



At a glance....

- Ground Floor Apartment
- Two Double Bedrooms
- Sitting Room with Direct Access onto Communal Garden
- Kitchen
- Family Bathroom
- Communal Gardens
- Secure Parking
- Great Central Location
- **NO CHAIN****

PROPERTY INFORMATION:

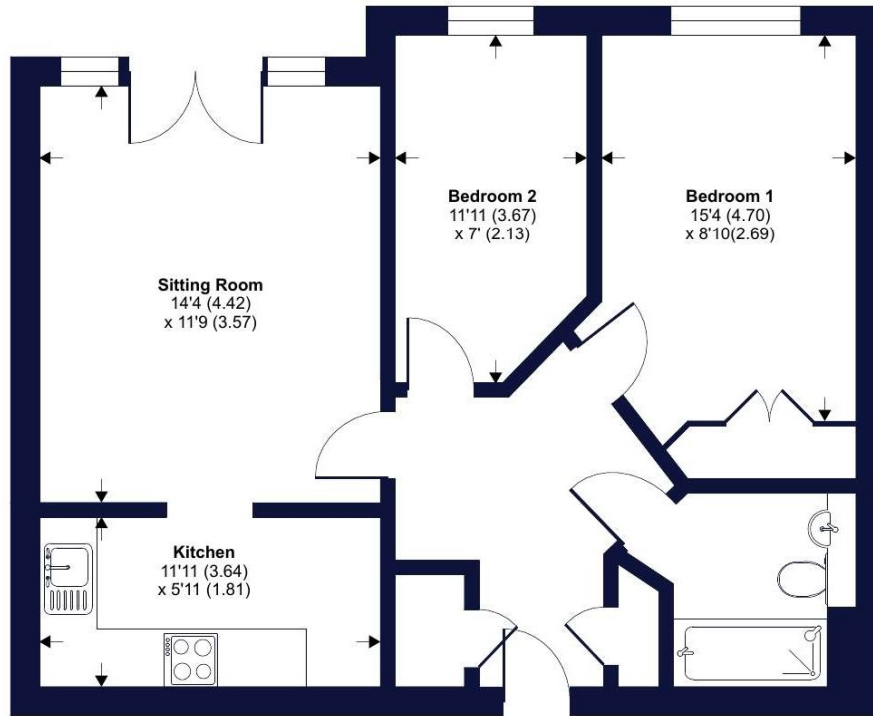
- Leasehold
- Council Tax Band: C
- Mains Electric, Water and Drainage
- Ground rent this year £238.92 pa
- Service charge £220.83 pcm
- Term for which the Property is leased: 125 years from and including 1 January 2005
- Broadband: Ultrafast 1800 Mbps 1000 Mbps is available.
- Mobile: You are likely to get good coverage.



Constantine House, New North Road, Exeter, EX4

Approximate Area = 620 sq ft / 57.5 sq m

For identification only - Not to scale

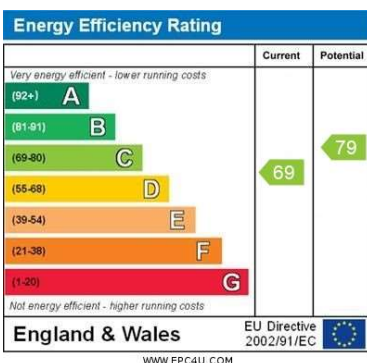


GROUND FLOOR



Floor plan produced in accordance with RICS Property Measurement 2nd Edition, Incorporating International Property Measurement Standards (IPMS2 Residential). © nichecom 2025. Produced for Winkworth. REF: 1228878

Winkworth



NOTICE: Whilst every effort has been made to ensure the accuracy of these sales details, they are for guidance purposes only and prospective purchasers are advised to seek their own professional advice as well as to satisfy themselves by inspection or otherwise as to their correctness. No representation or warranty whatsoever is made in relation to this property by Winkworth or its employees nor do such sales details form part of any offer or contract.

Winkworth

Crediton: 01363 773757
crediton@winkworth.co.uk

Exeter: 01392 271177
exeter@winkworth.co.uk

Tiverton: 01884 675 675
tiverton@winkworth.co.uk