



FLAT 5, HAMLET HOUSE, LONDON ROAD, LONDON, SE23
GUIDE PRICE: £365,000 LEASEHOLD

We are pleased to present a beautifully designed residence in the heart of the vibrant SE23 area. This modern flat is perfect for individuals or couples seeking a blend of style, comfort, and convenience.

Winkworth

for every step...



DESCRIPTION:

This charming two-bedroom, two-bathroom flat offers modern living in the desirable SE23 area. The flat features spacious rooms filled with natural light and includes a well-equipped kitchen and contemporary bathrooms. The primary bedroom boasts an en suite bathroom, providing added convenience and privacy.



Winkworth

for every step...

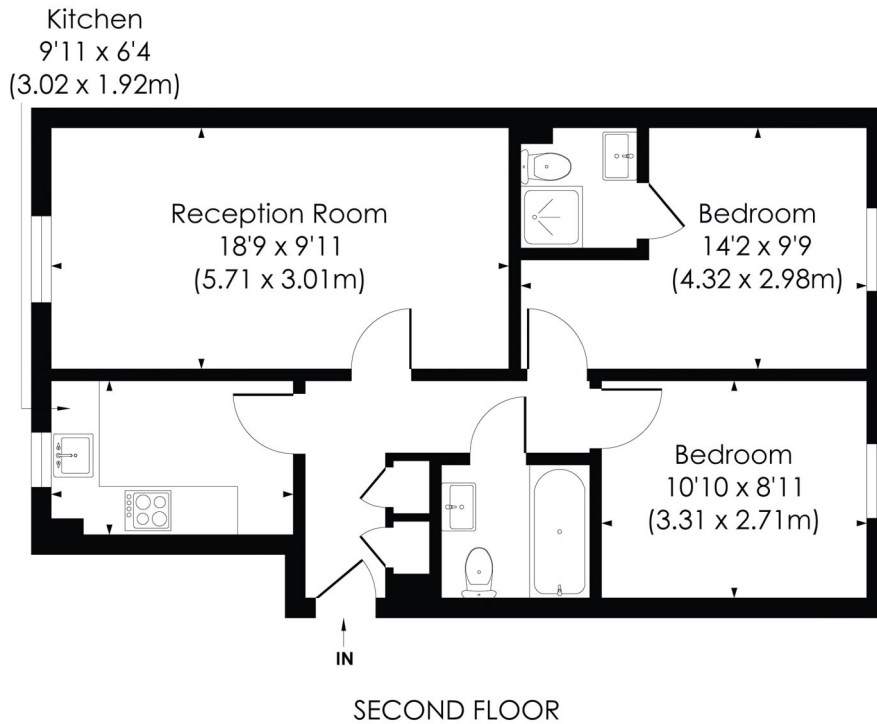


Winkworth

for every step...

LONDON ROAD, SE23

Approx. Gross Internal Floor Area
616 Sq. ft/57.25 Sq. m



pixangle
PROPERTY MARKETING

© Pixangle Property Marketing Ltd. info @pixangle.com Tel: 0208 870 2118
This floor plan has been prepared for illustration purposes only, in accordance with the latest RICS code of measuring and is not to scale. All measurements and areas are approximate and whilst every effort has been made to ensure the accuracy of the plan contained here, no responsibility is taken for any error, omission or misstatement.

This floorplan is for illustration purposes only and is not to scale. The position and size of doors, windows, appliances and other features are approximate.

Energy Efficiency Rating	
Current	Potential
Very energy efficient - lower running costs	
(92-100) A	81
(81-91) B	
(69-80) C	
(55-68) D	
(39-54) E	
(21-58) F	
(1-20) G	
Not energy efficient - higher running costs	
England, Scotland & Wales	
EU Directive 2002/91/EC	

COUNCIL TAX- D LOCAL AUTHORITY - Lewisham

SERVICE CHARGE- £3000 P.A. GROUND RENT – £500 P.A.

TENURE- LEASEHOLD LEASE LENGTH -Approx. 103 years left

SERVICES: Mains Electric, Gas, Drainage, Standard water.

BROADBAND: Standard Broadband Available. Checked on Openreach Oct 2024.

MOBILE SIGNAL: You are likely to have coverage with all mobile providers

HEATING: Gas Central Heating

NOTICE: Whilst every effort has been made to ensure the accuracy of these sales details, they are for guidance purposes only and prospective purchasers are advised to seek their own professional advice as well as to satisfy themselves by inspection or otherwise as to their correctness. No representation or warranty whatsoever is made in relation to this property by Winkworth or its employees nor do such sales details form part of any offer or contract.

winkworth.co.uk

Winkworth wishes to inform prospective buyers and tenants that these particulars are a guide and act as information only. All our details are given in good faith and believed to be correct at the time of printing but they don't form part of an offer or contract. No Winkworth employee has authority to make or give any representation or warranty in relation to this property. All fixtures and fittings, whether fitted or not are deemed removable by the vendor unless stated otherwise and room sizes are measured between internal wall surfaces, including furnishings.

Winkworth

for every step...