



KIER HARDIE HOUSE, HAZELLVILLE ROAD, LONDON N19
£400,000 LEASEHOLD

CONTEMPORARY FINISHES SET THE SCENE
FOR THIS FIRST FLOOR ONE-BEDROOM
APARTMENT IN A LIFT-SERVICED BUILDING.

Highgate | 020 8341 1988 | highgate@winkworth.co.uk

Winkworth

for every step...

winkworth.co.uk



DESCRIPTION:

Sitting on a peaceful residential street, a one-bedroom home elevated by modern design. On the exterior, a traditional period bricked façade. Inside, contemporary style and sleek touches. Step inside to a smartly finished lounge, flooded with natural light through graceful sash windows, leading out to an ample balcony. The room is characterised by warm lighting and a thoughtful colour palette; wood floors delicately contrast with taupe fitted cupboards, providing oodles of storage space. Enter the hallway with plentiful concealed storage, onto the recently refurbished eat-in kitchen. It's minimalist and fuss-free, with grey handleless cabinetry, duck-egg blue tiled splashback, and a solid worktop. Onto the master bedroom, it's pared-back style strikes a calming tone in this light-filled space. It comfortably accommodates a super-king size bed and large double wardrobe. Finally, an oversized bathroom is immaculately finished with bathtub and separate shower, hiding a handy utility cupboard for washer and dryer.

LOCATION:

Hornsey Lane Estate is a safe, evergreen, well-maintained residential community, with outdoor gym, sports pitch and table tennis. Located off Hazellville Road, the property is set within the Whitehall Park Conservation area. Crouch End with its independent shops, cafes and supermarkets is just ten minutes on foot. Plus, the breath-taking Parkland Walk is moments away.

MATERIAL INFORMATION:

Tenure: 125 year lease from 24th June 1990.

Service Charges: £1,801.25 (per annum for 2023/24). This pays for a variety of items including block maintenance, building insurance, communal electricity, entry phone repairs, Estate repairs and maintenance, fire safety, Ground Rent (£10.00), management fees, Tenant Management Organisation and maintenance.

Council Tax: Islington Council BAND B (£1,493.74 for 2024/25).

Parking: Resident: may apply for permits to park in allocated bays or on the road.

Utilities: Mains connected electricity, gas, water and sewerage.

Broadband and Data Coverage. According to Ofcom, Ultrafast Broadband services are available (Openreach and Virgin Media) with a very high confidence level of 5G data coverage for mobile phones.

Construction Type: Brick and asphalt.

Heating: Gas central heating.

Lease Covenants & Restrictions: Not to use the Flat for any purpose whatsoever other than as a private residential flat. To keep the floors covered with suitable material for reasonably minimising the transmission of noise to other dwellings within the building.

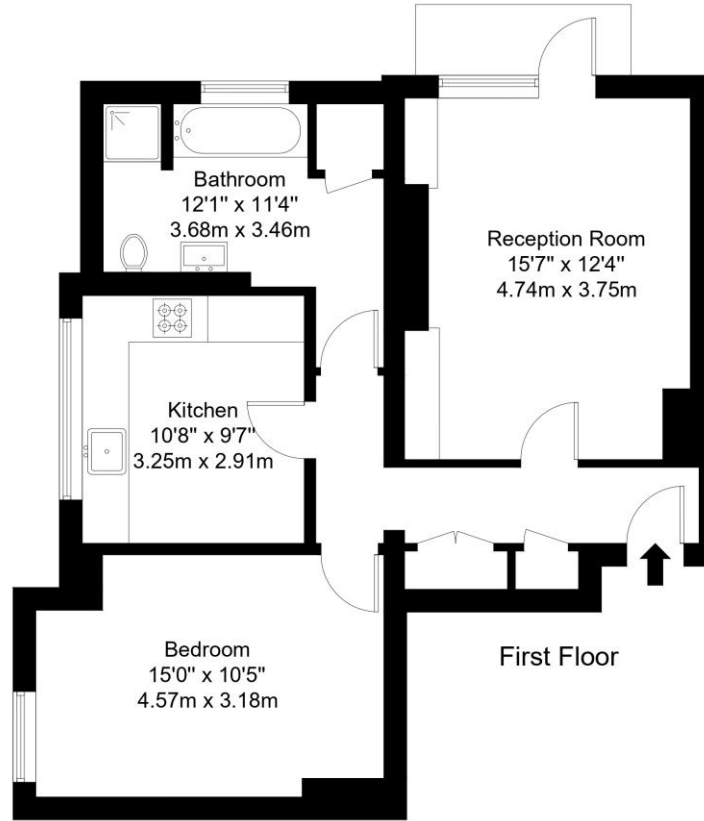


Hazellville Road, N19 3BX

Approx Gross Internal Area = 61.8 sq m / 665 sq ft

Balcony = 2.6 sq m / 28 sq ft

Total = 64.4 sq m / 693 sq ft

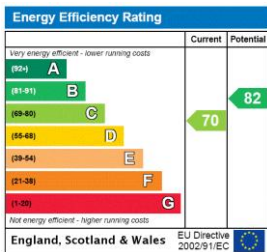


Ref :

Copyright **BLEUPLAN**

The Floor plan is not to scale and measurements and areas shown are approximate and therefore should be used for illustrative purposes only. The plan has been prepared in accordance with the RICS code of Measuring Practice and whilst we have confidence in the information produced it must not be relied on. Maximum lengths and widths are represented on the floor plan. If there is any aspect of particular importance, you should carry out or commission your own inspection of the property.
Copyright @ BLEUPLAN

This floorplan is for illustration purposes only and is not to scale. The position and size of doors, windows, appliances and other features are approximate.



Highgate | 020 8341 1988 | highgate@winkworth.co.uk

for every step...

winkworth.co.uk

Winkworth wishes to inform prospective buyers and tenants that these particulars are a guide and act as information only. All our details are given in good faith and believed to be correct at the time of printing but they don't form part of an offer or contract. No Winkworth employee has authority to make or give any representation or warranty in relation to this property. All fixtures and fittings, whether fitted or not are deemed removable by the vendor unless stated otherwise and room sizes are measured between internal wall surfaces, including furnishings.