



LADBROKE GROVE, LONDON, W10  
£2,250 PER MONTH

## CONTEMPORARY TWO BEDROOM, TWO BATHROOM APARTMENT IN LADBROKE GROVE NOTTING HILL

North Kensington | 020 7792 5000 | northkensington@winkworth.co.uk

Tenant Fees Apply: Details of fees for tenant referencing, tenancy agreement admin fees and renewal fees are available on the Winkworth website and the link can be found with the displayed rent for the property. Tenants should ensure they are fully conversant with these upfront fees and other costs that are involved at the outset of the tenancy before making an offer to rent and your local Winkworth office will provide written details upon request.

[winkworth.co.uk](http://winkworth.co.uk)

**Winkworth**

for every step...



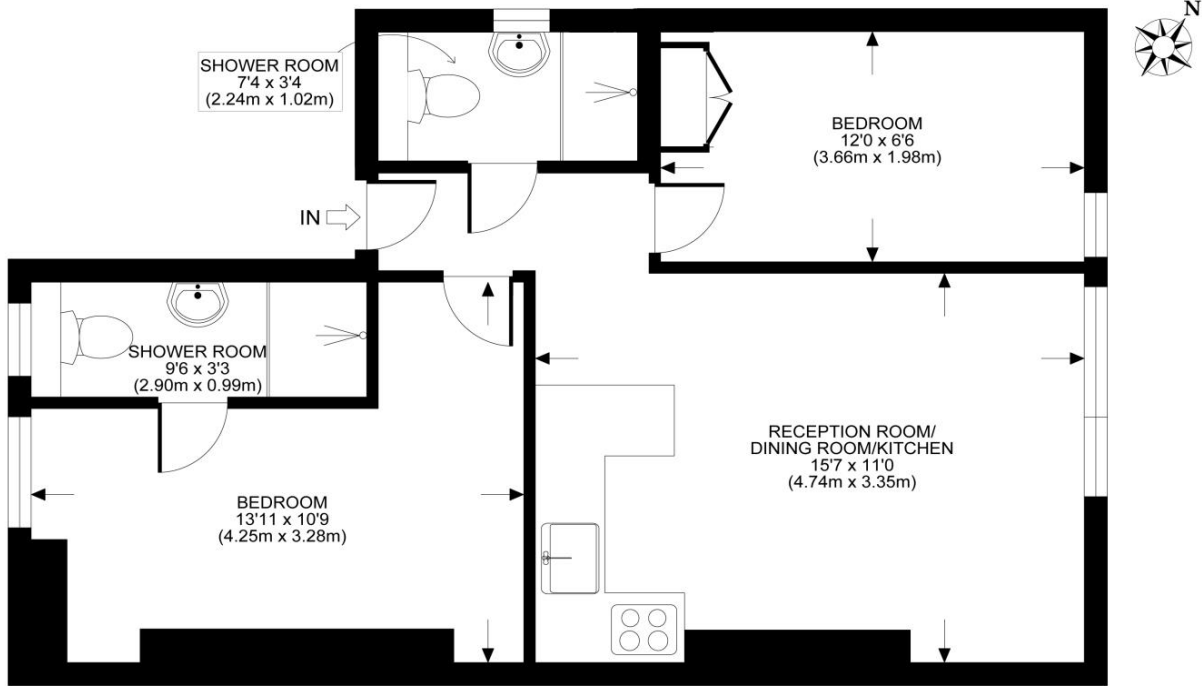
**Fantastic two bedroom apartment with two bathrooms set on the top floor of this Victorian Building in the heart of Ladbroke Grove ,North Kensington.**

### **AT A GLANCE**

- BRIGHT
- AMAZING LOCATION
- CLOSE TO TRANSPORT LINKS
- CLOSE TO PORTOBELLO ROAD

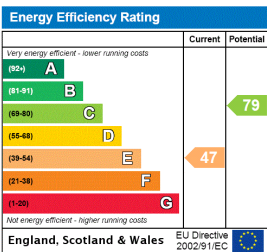






All measurements walls, doors, windows, fittings and their appliances, their size and locations are shown conventionally and are approximate only and cannot be regarded as being a representation either by the seller or his agent nor zentuvo  
[www.zentuvo.co.uk](http://www.zentuvo.co.uk)

This floorplan is for illustration purposes only and is not to scale. The position and size of doors, windows, appliances and other features are approximate.



**Deposit: £0.00**

**Holding Deposit:**

**Council Tax Band:**

Where no figures are shown, we have been unable to ascertain the information. All figures that are shown were correct at the time of printing.

North Kensington | 020 7792 5000 | [northkensington@winkworth.co.uk](mailto:northkensington@winkworth.co.uk)