



**CODRINGTON HILL, LONDON, SE23**  
**£425,000 LEASEHOLD**

Forest Hill | | [foresthill@winkworth.co.uk](mailto:foresthill@winkworth.co.uk)



for every step...

[winkworth.co.uk](http://winkworth.co.uk)



## DESCRIPTION:

A period conversion flat in Codrington Hill, which offers a blend of historic charm and modern living. Featuring high ceilings and large windows combined with updated interiors, this property is bright and modern. Located in the desirable Forest Hill area, the property benefits from proximity to local amenities including Blythe Hill fields and only a few minutes from Honor Oak station making it an attractive option for those seeking a characterful home in a well-connected part of London.

## AT A GLANCE

- -Victorian period conversion flat
- -Close to honor oak station
- -Spacious & light
- -Period features

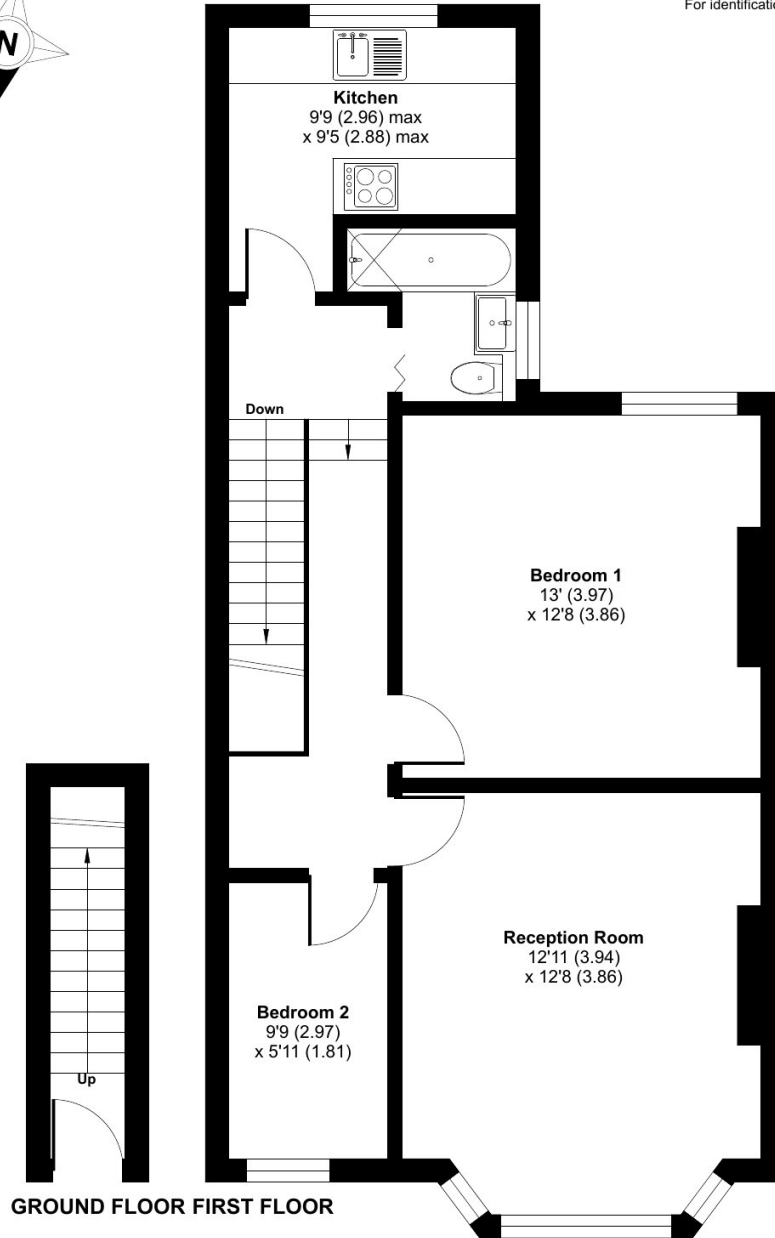




# Codrington Hill, London, SE23

Approximate Area = 682 sq ft / 63.3 sq m

For identification only - Not to scale

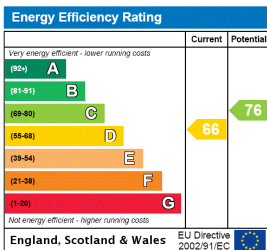


GROUND FLOOR FIRST FLOOR



Floor plan produced in accordance with RICS Property Measurement Standards incorporating International Property Measurement Standards (IPMS2 Residential). © nrichcom 2024. Produced for Winkworth Forest Hill and New Cross. REF: 1177504

This floorplan is for illustration purposes only and is not to scale. The position and size of doors, windows, appliances and other features are approximate.



**Tenure:** Leasehold

**Term:** 0 year and 0 months

**Service Charge:** £0 per annum

**Ground Rent:** £ 0 Annually (subject to increase)

**Council Tax Band:**

Where no figures are shown, we have been unable to ascertain the information. All figures that are shown were correct at the time of printing.

**Winkworth**

Forest Hill | | foresthill@winkworth.co.uk

for every step...

winkworth.co.uk

Winkworth wishes to inform prospective buyers and tenants that these particulars are a guide and act as information only. All our details are given in good faith and believed to be correct at the time of printing but they don't form part of an offer or contract. No Winkworth employee has authority to make or give any representation or warranty in relation to this property. All fixtures and fittings, whether fitted or not are deemed removable by the vendor unless stated otherwise and room sizes are measured between internal wall surfaces, including furnishings.