



FULHAM ROAD, LONDON, SW3
£975 PER WEEK FURNISHED, UNFURNISHED

LARGE TWO BEDROOM APARTMENT SET IN A PORTERED BUILDING LOCATED IN THE HEART OF SOUTH KENSINGTON

Knightsbridge & Chelsea | 0207 589 6616 | knightsbridge@winkworth.co.uk

Winkworth

Tenant Fees Apply: Details of fees for tenant referencing, tenancy agreement admin fees and renewal fees are available on the Winkworth website and the link can be found with the displayed rent for the property. Tenants should ensure they are fully conversant with these upfront fees and other costs that are involved at the outset of the tenancy before making an offer to rent and your local Winkworth office will provide written details upon request.

winkworth.co.uk

See things differently



DESCRIPTION:

Located in the heart of South Kensington, this large, two double bedroom (869 sq ft) apartment set in this quiet, modern private ported building with lift.

The apartment consists of large reception room and bright modern kitchen with fully integrated appliances. Large windows running along one side of the reception room give the room a fantastic sense of openness and space.

The property is available to rent furnished or unfurnished.

- 2 Bedrooms
- 1 Bathroom
- Upper Floor with Lift
- Communal Gardens
- 869 Approx Sq Ft
- EPC - D

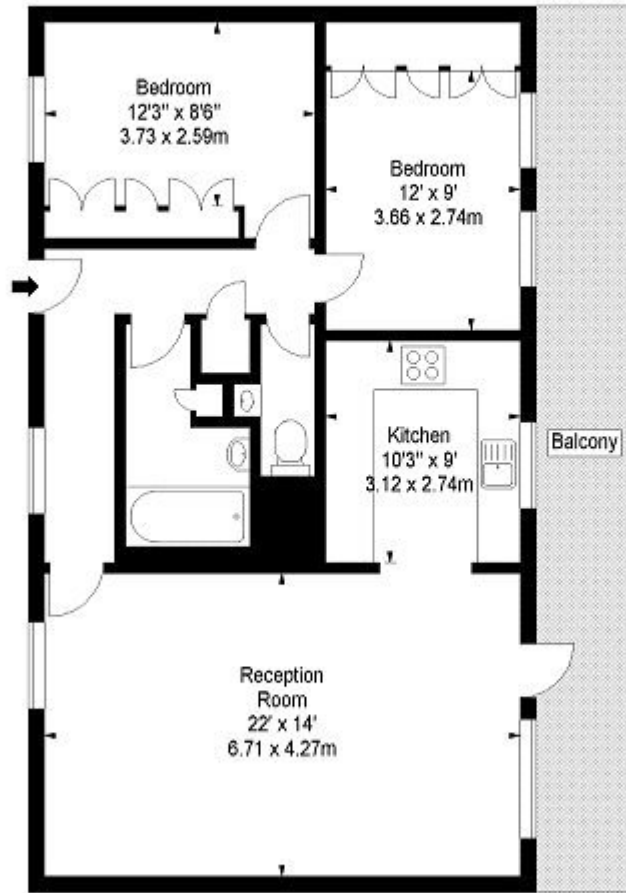
Winkworth

161 FULHAM ROAD SW3

APPROX. GROSS INTERNAL AREA *
869 Ft² - 80.73 M²

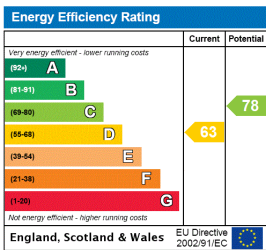


Illustration For Identification Only, Not to Scale
All Calculations include Any/All Areas Under 1.5m Head Height.
* As Defined by RICS - Code of Measuring Practice



FOURTH FLOOR

This floorplan is for illustration purposes only and is not to scale. The position and size of doors, windows, appliances and other features are approximate.



Knightsbridge & Chelsea | 0207 589 6616 | knightsbridge@winkworth.co.uk



winkworth.co.uk

See things differently

Winkworth wishes to inform prospective buyers and tenants that these particulars are a guide and act as information only. All our details are given in good faith and believed to be correct at the time of printing but they don't form part of an offer or contract. No Winkworth employee has authority to make or give any representation or warranty in relation to this property. All fixtures and fittings, whether fitted or not are deemed removable by the vendor unless stated otherwise and room sizes are measured between internal wall surfaces, including furnishings.