



Winkworth



Winkworth



Winkworth

TODD CLOSE, HERTFORDSHIRE, WD6
£325,000 LEASEHOLD

CHAIN FREE TWO BEDROOM FIRST FLOOR APARTMENT

Borehamwood | 020 8953 8899 | borehamwood@winkworth.co.uk



DESCRIPTION:

Winkworth is delighted to offer for sale this chain free Two bedroom apartment. Offering open plan kitchen, dining area and lounge. The lounge contains French doors which lead to a south facing balcony. You have a spacious hallway with two cupboards affording ample storage, two bedrooms along with a modern three-piece bathroom. The apartment also comes with an allocated covered parking space.

The property is conveniently located with walking distance of Elstree and Borehamwood Station Aswell as the high street with an array of shops, bars and restaurants.

AT A GLANCE

- 2 Bedrooms
- Entrance Hall
- Kitchen Dining Room
- Living Room
- Bathroom
- Roof Terrace





Approximate Gross Internal Area = 59.8 sq m / 644 sq ft

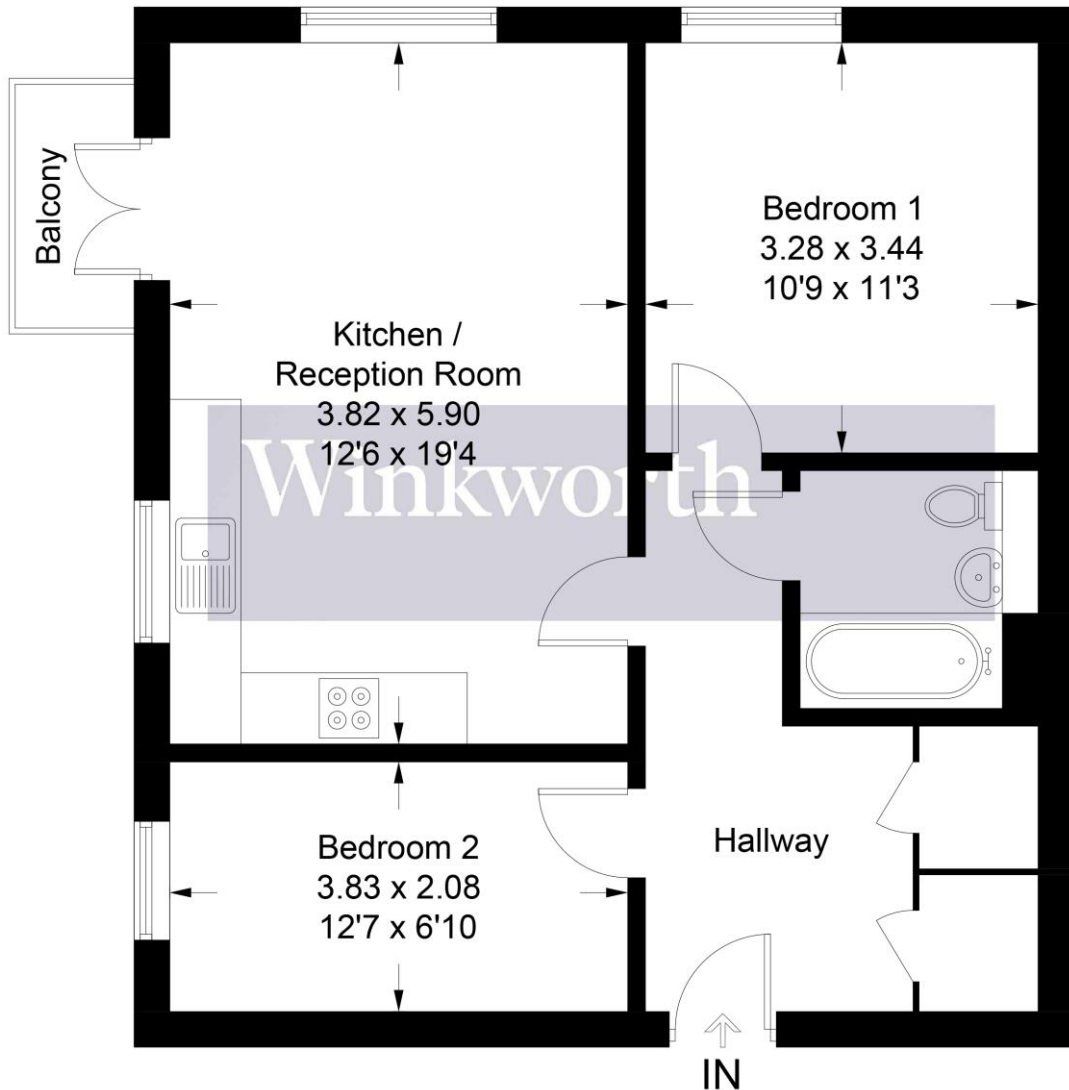


Illustration for identification purposes only, measurements are approximate, not to scale. Winkworth © 2025 (ID1161511)

This floorplan is for illustration purposes only and is not to scale. The position and size of doors, windows, appliances and other features are approximate.

Energy Efficiency Rating		Current	Potential
Very energy efficient - lower running costs			
(92-100) A			
(81-91) B		83	83
(69-80) C			
(55-68) D			
(39-54) E			
(21-38) F			
(1-20) G			
Not energy efficient - higher running costs			
England, Scotland & Wales		EU Directive 2002/91/EC	

Tenure: Leasehold

Term: 110 year and 9 months

Service Charge: £0 per annum

Ground Rent: £ 0 Annually (subject to increase)

Council Tax Band: C

Where no figures are shown, we have been unable to ascertain the information. All figures that are shown were correct at the time of printing.