



UNDERHILL ROAD, EAST DULWICH, LONDON, SE22  
OIEO £850,000 FREEHOLD

**THIS THREE BEDROOM VICTORIAN HOUSE IS  
SITUATED ON A RESIDENTIAL ROAD, IN THE  
CENTRE OF EAST DULWICH.**

Dulwich | 020 8299 2722 | [dulwich@winkworth.co.uk](mailto:dulwich@winkworth.co.uk)

Tenure Freehold | Council Tax Band D – London Borough of Southwark

**Winkworth**

[winkworth.co.uk](http://winkworth.co.uk)

See things differently





## DESCRIPTION:

This three bedroom Victorian house is situated on a residential road, in the centre of East Dulwich. The property comprises of a separate reception with fireplace and bay window and a large family kitchen-diner with doors leading out to a sunny south facing garden to rear. Upstairs are two bedrooms one with en-suite shower room, third single room and a family bathroom. Located close to the bars, restaurants, shops and cinema on Lordship Lane as well as the wide open green spaces of Peckham Rye Park and local primary and secondary schools. Transport links are provided via bus connections as well as Peckham Rye, East Dulwich and Forest Hill stations for trains to East and Central London. This is a fantastic house in a superb location offered to the market unfurnished with early viewing recommended.

## AT A GLANCE

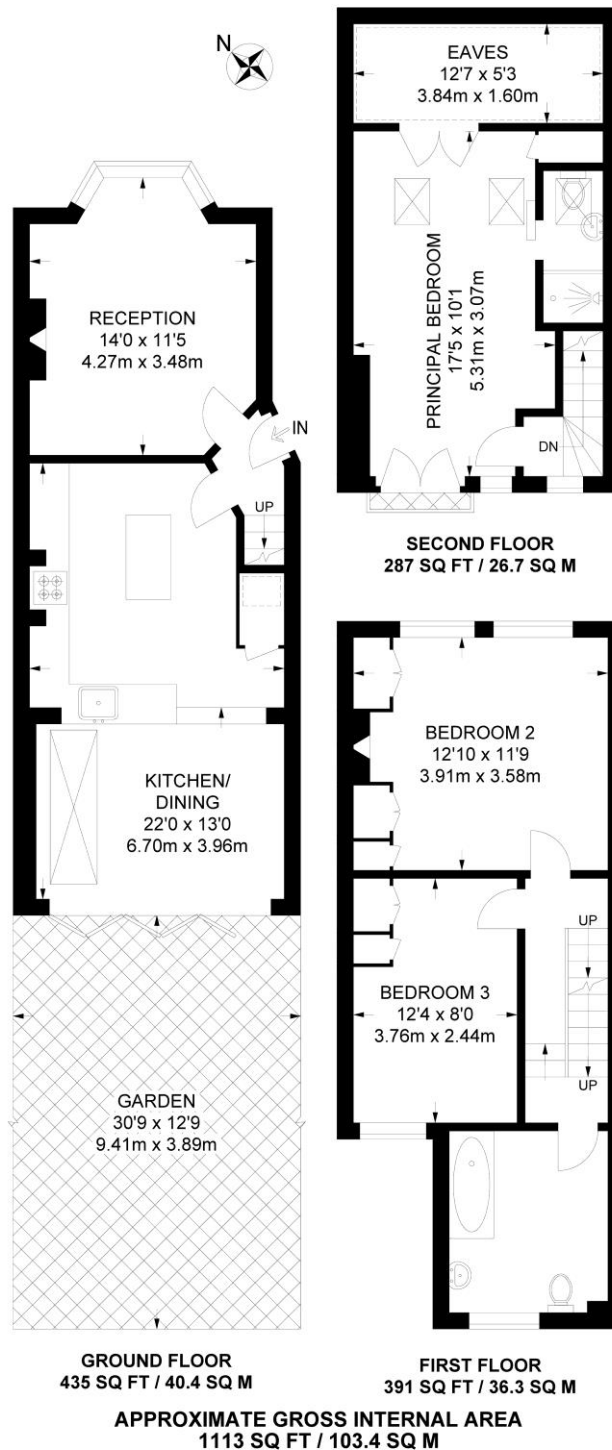
- Three-bedroom Victorian house
- Separate reception with fireplace and bay window
- Sunny south-facing garden to the rear.
- Close local amenities
- Excellent transport links



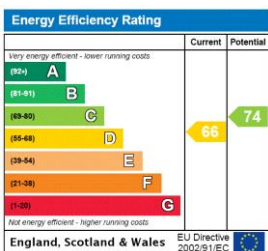








This floorplan is for illustration purposes only and is not to scale. The position and size of doors, windows, appliances and other features are approximate.



Dulwich | 020 8299 2722 | [dulwich@winkworth.co.uk](mailto:dulwich@winkworth.co.uk)

**Winkworth**

[winkworth.co.uk](http://winkworth.co.uk)

See things differently

Winkworth wishes to inform prospective buyers and tenants that these particulars are a guide and act as information only. All our details are given in good faith and believed to be correct at the time of printing but they don't form part of an offer or contract. No Winkworth employee has authority to make or give any representation or warranty in relation to this property. All fixtures and fittings, whether fitted or not are deemed removable by the vendor unless stated otherwise and room sizes are measured between internal wall surfaces, including furnishings.