



SHINFIELD STREET, W12
£750,000 LEASEHOLD

**FANTASTIC DUPLEX FLAT SPREAD OVER THE
FIRST AND SECOND FLOORS OF THIS PERIOD
BUILDING WITH BRIGHT ROOF TERRACE**

North Kensington | 020 7792 5000 | northkensington@winkworth.co.uk

Winkworth

for every step...

winkworth.co.uk



DESCRIPTION:

Maintaining many original features which add to its charm and character, the property comprises a bright front reception, a spacious fully fitted, eat-in kitchen, three bedrooms and a family bathroom on the first floor. The stairs lead up to two large and airy bedrooms - one with an en-suite bathroom. On the first floor, the property benefits from a stunning large bright roof terrace.

Shinfield Street is a beautiful, quiet residential street situated moments away from the Wormwood Scrubs in North Kensington. Local transport links are within easy access at both Ladbroke Grove and White City, as are shopping facilities at both Portobello and Westfield.

AT A GLANCE

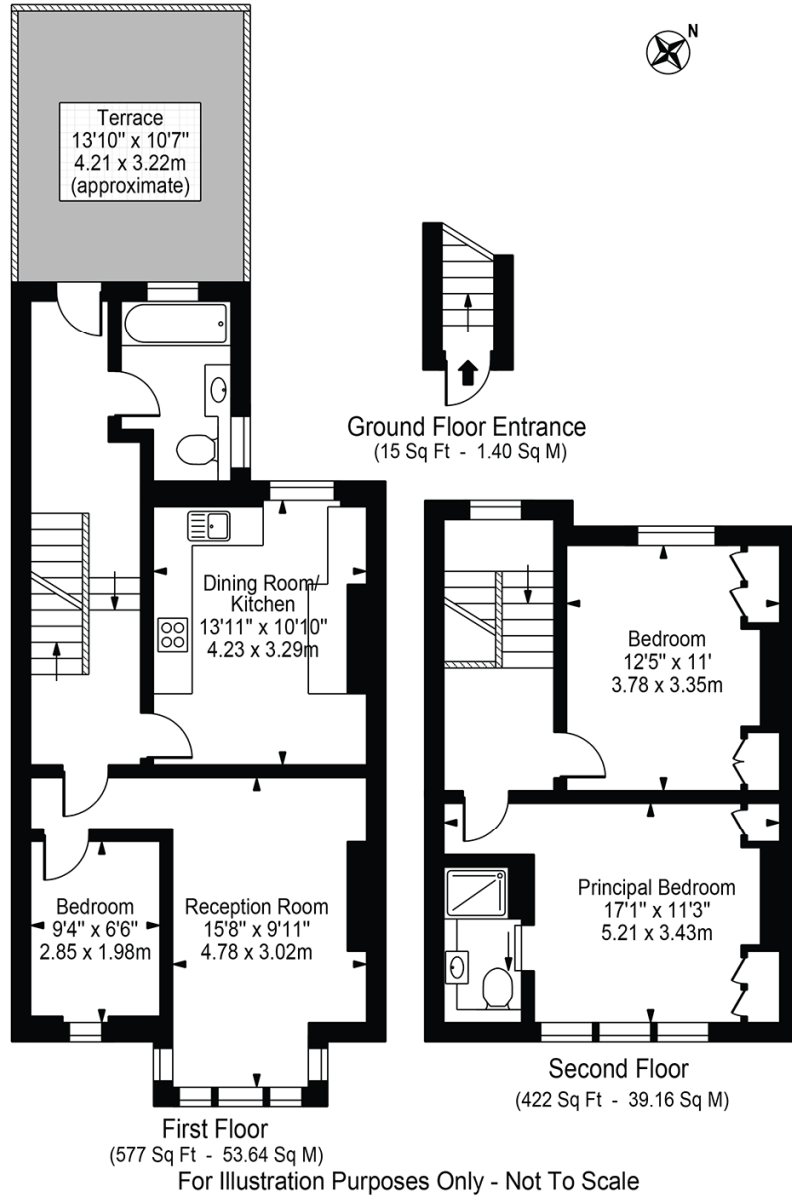
- Duplex Flat
- Three Double Bedrooms
- Large Private Roof Terrace
- High Ceilings
- Newly Refurbished
- Abundance of Natural Light
- EPC Rating D





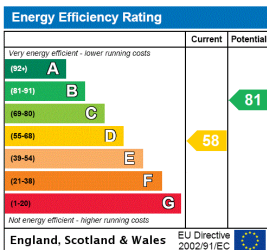
Shinfield Street

Approx. Gross Internal Area 1014 Sq Ft - 94.20 Sq M



This floor plan should be used as a general outline for guidance only and does not constitute in whole or in part an offer or contract. Any intending purchaser or lessee should satisfy themselves by inspection, searches, enquiries and full survey as to the correctness of each statement. Any areas, measurements or distances quoted are approximate and should not be used to value a property or be the basis of any sale or let. Copyright Morriarti Photography & Design LTD

This floorplan is for illustration purposes only and is not to scale. The position and size of doors, windows, appliances and other features are approximate.



Tenure: Leasehold

Term: New Lease 125 Years TBC

Service Charge: TBC

Ground Rent: Peppercorn

Council Tax Band: Hammersmith and Fulham Band C

Where no figures are shown, we have been unable to ascertain the information. All figures that are shown were correct at the time of printing.

North Kensington | 020 7792 5000 | northkensington@winkworth.co.uk

Winkworth

for every step...

winkworth.co.uk

Winkworth wishes to inform prospective buyers and tenants that these particulars are a guide and act as information only. All our details are given in good faith and believed to be correct at the time of printing but they don't form part of an offer or contract. No Winkworth employee has authority to make or give any representation or warranty in relation to this property. All fixtures and fittings, whether fitted or not are deemed removable by the vendor unless stated otherwise and room sizes are measured between internal wall surfaces, including furnishings.