



LOFTING ROAD, LONDON, N1
£650,000 LEASEHOLD

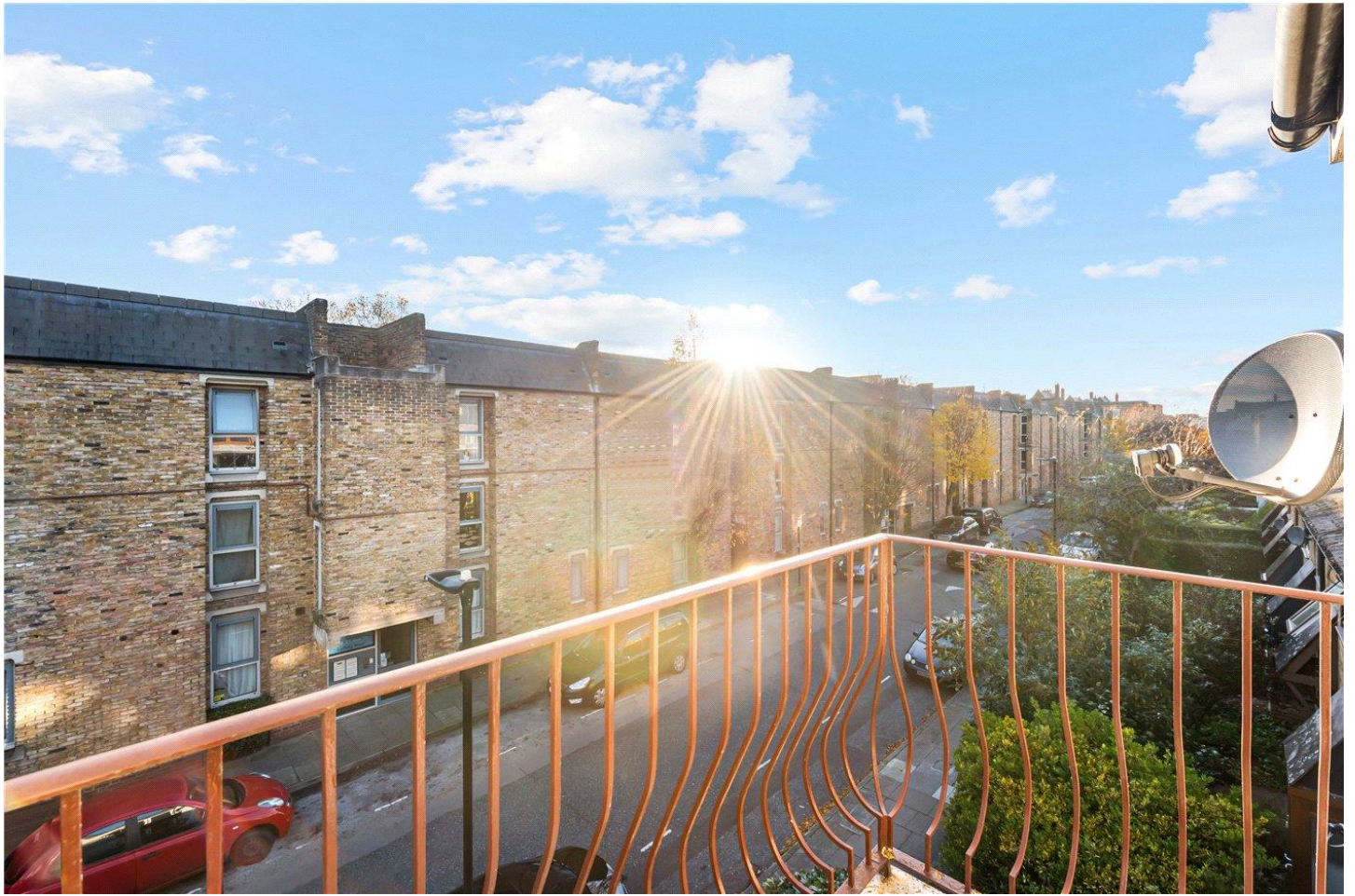
A FANTASTIC, TWO BEDROOM TOP FLOOR FLAT IN THE HEART OF BARNSBURY

Islington | 0207 354 2480 | islington@winkworth.co.uk

Winkworth

winkworth.co.uk

See things differently



DESCRIPTION:

A stunning, two double bedroom apartment set across the top floor of this well-kept block in the heart of Barnsbury, N1. The property is flooded with natural light throughout and has been recently refurbished to a high standard. Accommodation comprises of wonderfully spacious living room featuring large, south-facing double doors leading out to a private balcony. Separate to the living room positioned to the rear is a sizeable fully equipped kitchen with plentiful cupboard and worktop space. Both bedrooms are genuine sized doubles with the master bedroom including an inbuilt wardrobe. The property is completed with a contemporary style bathroom and benefits from an off-street parking space.

Lofting Road is nestled away in the residential roads of Barnsbury, while the house is perfectly located for easy access to the many boutique shops, restaurants and bars on Upper Street as well as an array of fantastic transport links. The property is equidistant between Angel underground offering the Northern line and Highbury and Islington station which offers underground services on the Victoria line and a selection of over ground services. A variety of excellent bus routes are at hand creating effortless access across London whilst international travel is easily facilitated from St Pancras.

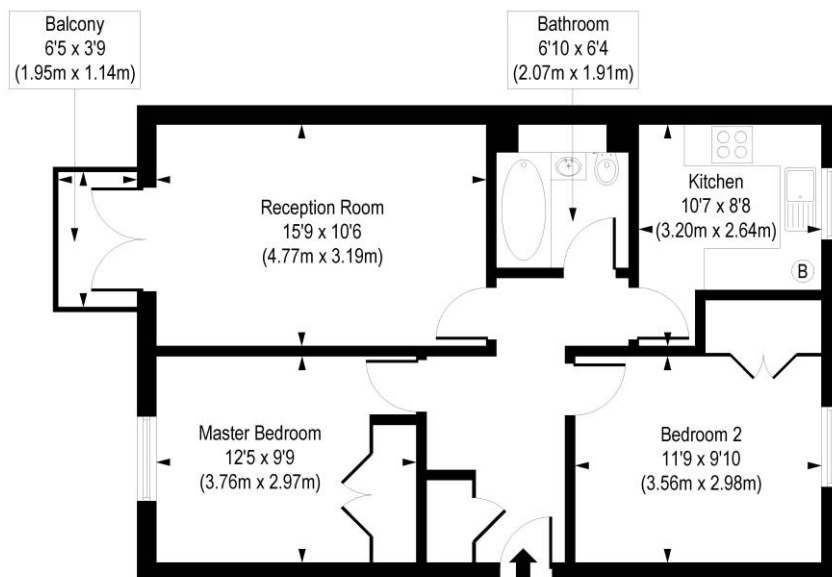
Winkworth



Winkworth

Lofting Road, N1

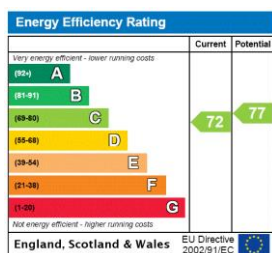
Approx. Gross Internal Floor Area 655 sq. ft / 60.89 sq. m



Second Floor

COMPLIANT WITH RICS CODE OF MEASURING PRACTICE. Floorplan is for illustrative purposes only and is not to scale. Every attempt has been made to ensure the accuracy of the floorplan shown, however all measurements, fixtures, fittings and data shown are an approximate interpretation for illustrative purposes only. Liability for errors, omissions or mis-statement through negligence or otherwise is hereby excluded.

This floorplan is for illustration purposes only and is not to scale. The position and size of doors, windows, appliances and other features are approximate.



Islington | 0207 354 2480 | islington@winkworth.co.uk

Winkworth

winkworth.co.uk

See things differently

Winkworth wishes to inform prospective buyers and tenants that these particulars are a guide and act as information only. All our details are given in good faith and believed to be correct at the time of printing but they don't form part of an offer or contract. No Winkworth employee has authority to make or give any representation or warranty in relation to this property. All fixtures and fittings, whether fitted or not are deemed removable by the vendor unless stated otherwise and room sizes are measured between internal wall surfaces, including furnishings.