



Kennington Lane, London, SE11

£549,950 Share of Freehold

This wonderful three-bedroom period conversion flat with a share of the freehold on Kennington Lane is the perfect property for someone looking to be close to the city. This flat is offered chain-free.

LOCATION

This Property is positioned moments away from Kennington cross with its amenities including cafes, restaurants and pubs, you are also a stone's throw away from the bustling Elephant and Castle.

DESCRIPTION

The open plan living room and kitchen is at front of the building, benefiting from large windows that flood the room with the natural light, the living space comfortably fits a sofa, armchair, coffee table and a dining area.

In the kitchen there is plenty of storage and an abundance of work top space, as well as an island which separates the kitchen from the living room, there is an integrated oven, gas hob and space for a dishwasher, fridge and a freezer.

The first of the three bedrooms is a flexible space that provides built in storage and could function as either a bedroom with a double bed or a lovely home office/additional reception space.

Further down the hall on the right there is modern bathroom which contains a bath in shower, W/C and sink.

The second and third bedroom are double bedrooms and both benefit from an abundance of built in storage, the third bedroom has French doors which open out and really brighten up the room.

SERVICE CHARGE, GROUND RENT AND COUNCIL TAX

Service Charge - Nil

Ground Rent - Nil

Council Tax Band - D

UTILITIES

Electricity – mains connected

Gas – mains connected

Water – mains connected

Heating –gas central heating

Sewerage – mains connected

Broadband - Ultrafast Full Fibre Broadband

LOCAL AUTHORITY

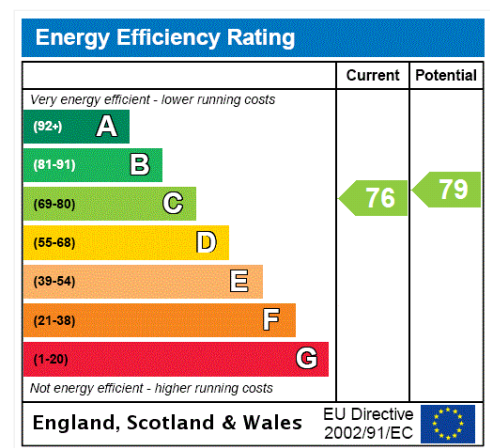
Lambeth Council

TENURE

Share of Freehold – New Lease – 999 years

DIRECTIONS

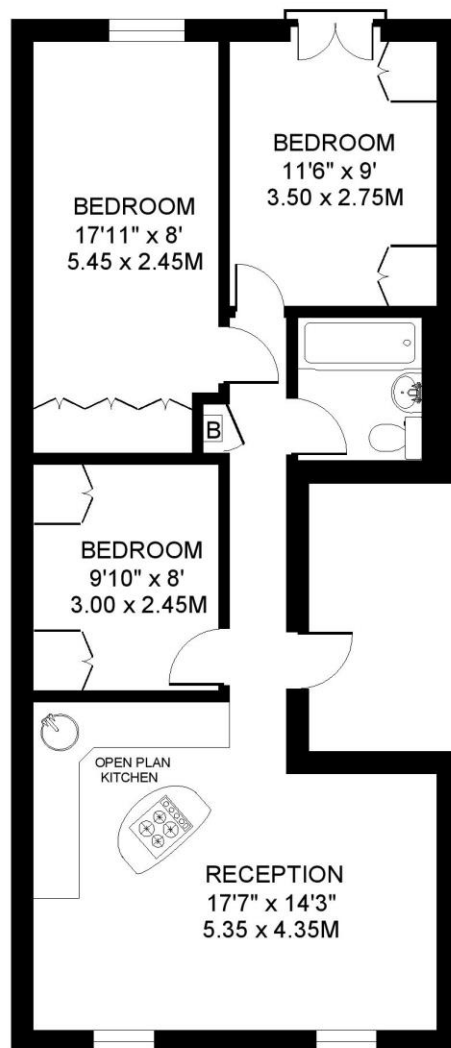
Kennington Station is 0.3 miles away (5 minutes' walk away) Elephant and Castle Station is 0.4 miles away (around a 10 minute walk) and there are frequent bus services into the City.





KENNINGTON LANE SE11
3 BEDROOM FLAT

Approximate gross floor area
663 SQ.FT / 61.6 SQ.M.



FIRST FLOOR

This floorplan is for illustration purposes only and is not to scale. The position and size of doors, windows, appliances and other features are approximate.

Copyright: These plans should not be reproduced by any other person, without permission.
Floorplan produced for Winkworth by Floorplanners 07801 228850

Kennington | 020 7587 0600 | kennington@winkworth.co.uk